

\$7.00
\$2.00

MAR 08 1999

KENT COUNTY REMONUMENTATION

SECTION

LAND CORNER RECORDATION CERTIFICATE
Filing Requirement of Act 74, Mich. P.A. 1970

STATE OF MICHIGAN
COUNTY OF KENT
RECEIVED FOR RECORD
93 MAY 21 AM 8:31
REG. OF DEEDS
Lucy Bond

For corners in

KENT COUNTY
(County)

Located In:

Corner Code #

1. Public Land Survey	T <u>9N</u> R <u>11W</u>	<u>E-11</u>
	T _____ R _____	_____
	T _____ R _____	_____
	T _____ R _____	_____
2. Property Controlling in Section	S _____ T _____ R _____	_____
	S _____ T _____ R _____	_____
3. Miscellaneous Property in Sec.	S _____ T _____ R _____	_____
	S _____ T _____ R _____	_____

10607

Register of Deeds Stamp & File Number

4. Lot No. _____, Recorded Plat _____
5. Private Claims _____

A	B	C	D	E	F	G	H	I	J	K	L	M
1												
2	6		5		4		3		2		1	
3												
4	7		8		9		10		11		12	
5												
6	18		17		16		15		14		13	
7												
8	19		20		21		22		23		24	
9												
10	30		29		28		27		26		25	
11												
12	31		32		33		34		35		36	
13												

I, Kirk Breitels, in a field survey on April 7, 19 98 do hereby state that under requirements of P.A. 74, Michigan P.A. of 1970, the corner points mentioned in lines 1 and 2 above were in conformance with regulations and rules therefore as required in the current manual of survey instructions of the United States Department of the Interior, Bureau of Land Management or by a decree of a Court of Law and/or that the corner points mentioned in lines 3, 4 and 5 above were in conformance with the rules of the Michigan Board of Land Surveyors or by a Decree of a Court of Law; established, re-established, monumented, recovered, found as expressed below:

NOTE: Not more than 2 corners, all in the same town and range, may be recorded on this certificate.

A. Description of original monument and accessories and/or subsequent restoration:

E-11 1837 GLO	Whitcomb	Set Post
1967 Kent Co. Wits		3/4" Iron
1978 LCRC #1105	Reda	3/4" Iron in Mon. Box
1980 LCRC #1484	Merdzinski	Set Kent County Monument in Mon. Box
1990 LCRC #5669	Marschall	Kent County Monument

P.A. 345 1990 KENT COUNTY

PEER APPROVED 4/30/98

CHAIRMAN Harry Fisher

The position of this corner was previously approved by the Kent County Remonumentation Peer Group, monumented by Jon A. Merdzinski on 11-28-80 and was recorded per LCRC #1484.

B. Description of corner evidence found and/or method applied in restoring or reestablishing corner:

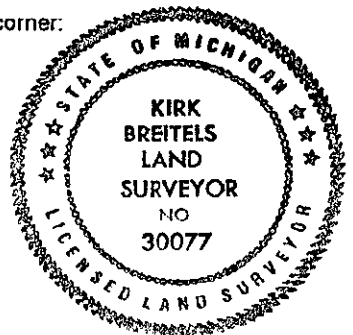
E-11 Found Kent County Monument (Harrison) per witnesses from above LCRC as set by John A. Merdzinski in place of the 3/4" Iron he found inside a Mon. Box. Said Iron checks with Kent Co. Wits. and LCRC #1105.

LCRC #1484	LCRC #5669
Nail & Remon. tag 8" Elm N50°W 65.97'	Nail & Remon. tag P. Pole S01°E 39.34'
Nail & Remon. tag 10" Elm N75°W 126.84'	Nail & Remon. tag Fe. Post N01°E 24.94'
Nail & Remon. tag Fe. Post N00°E 24.03'	Nail & Remon. tag 12" Cherry N07°W 90.75'
Nail & Remon. tag 12" Cherry N10°W 90.93'	Nail & Remon. tag 8" Elm N52°W 65.90'
Nail & Remon. tag P. Pole S05°W 39.31'	Nail & Remon. tag 14" Elm N73°W 106.77'
Lot Iron N00°E 33.22'	Lot Iron S00°E 32.90'

The selected location is accepted by me and is generally accepted by professional surveyors as the best available evidence of the position of the original corner.

C. Description of monument for corner and accessories established to perpetuate locating the position of the corner:

E-11 Standard Kent County Monument	
Nail & KC Remon. tag E. side P. Pole	S01°E 39.34'
Nail & KC Remon. tag E. side 15" Cherry	N07°E 90.82'
Nail & KC Remon. tag S. side 15" Elm	N52°W 65.92'
Nail & KC Remon. tag S. side 18" dead Elm	N73°W 106.77'
Nail & KC Remon. tag NE side 6" Pine	S50°E 52.54'
Cut "X" top C/L concrete culvert	N05°W 19.39'
On C/L 11 Mile Rd. & on fence lines N-S ±	



Signed by Kirk Breitels
Surveyor's Michigan License No. 30077

Date 4/30/98