

SURVEY & REMONUMENTATION

MAR 08 1999

KENT COUNTY REMONUMENTATION

\$7.00  
\$2.00

SECTION LAND CORNER RECORDATION CERTIFICATE  
Filing Requirement of Act 74, Mich. P.A. 1970

For corners in

KENT COUNTY  
(County)

Located In: Corner Code #

1. Public Land Survey T 9N R 11W E-12  
T \_\_\_\_\_ R \_\_\_\_\_  
T \_\_\_\_\_ R \_\_\_\_\_  
T \_\_\_\_\_ R \_\_\_\_\_

2. Property Controlling in Section S \_\_\_\_\_ T \_\_\_\_\_ R \_\_\_\_\_  
S \_\_\_\_\_ T \_\_\_\_\_ R \_\_\_\_\_

3. Miscellaneous Property in Sec. S \_\_\_\_\_ T \_\_\_\_\_ R \_\_\_\_\_  
S \_\_\_\_\_ T \_\_\_\_\_ R \_\_\_\_\_

4. Lot No. \_\_\_\_\_, Recorded Plat \_\_\_\_\_

5. Private Claims \_\_\_\_\_

STATE OF MICHIGAN  
COUNTY OF KENT  
RECEIVED FOR RECORD

98 MAR -5 AM 8:33

REG. OF DEEDS

*Lucy Bond*

10526

Register of Deeds Stamp & File Number

A	B	C	D	E	F	G	H	I	J	K	L	M
1												
2	6	5	4	3	2	1						
3												
4	7	8	9	10	11	12						
5												
6	18	17	16	15	14	13						
7												
8	19	20	21	22	23	24						
9												
10	30	29	28	27	26	25						
11												
12	31	32	33	34	35	36						
13												

I, Kirk Breitels, in a field survey on Feb. 2, 19 98 do hereby state that under requirements of P.A. 74, Michigan P.A. of 1970, the corner points mentioned in lines 1 and 2 above were in conformance with regulations and rules therefore as required in the current manual of survey instructions of the United States Department of the Interior, Bureau of Land Management or by a decree of a Court of Law and /or that the corner points mentioned in lines 3, 4 and 5 above were in conformance with the rules of the Michigan Board of Land Surveyors or by a Decree of a Court of Law, established, re-established, monumented, recovered, found as expressed below:

NOTE: Not more than 2 corners, all in the same town and range, may be recorded on this certificate.

A. Description of original monument and accessories and/or subsequent restoration:

E-12	1837	GLO	Whitcomb	Set Post
		Kent Co. Wits		Leaded Stone
1983		LCRC #3404	Glaza	Leaded Stone
1984		LCRC #4026	Rosema	Set Kent County Monument
1990		LCRC #5670	Marschall	Kent County Monument

P.A. 345 1990 KENT COUNTY  
PEER APPROVED 2/19/98  
CHAIRMAN [Signature]

The position of this corner was previously approved by the Kent County Remonumentation Peer Group, monumented by Maurice J. Rosmea on 11-20-84 and was recorded per LCRC #4026.

B. Description of corner evidence found and/or method applied in restoring or reestablishing corner:

E-12 Found Kent County Monument (Harrison) per witnesses from above LCRC as set by Maurice J. Rosema in place of the Leaded Stone he found. Said Leaded Stone checks with Kent Co. Wits. and LCRC #3404.

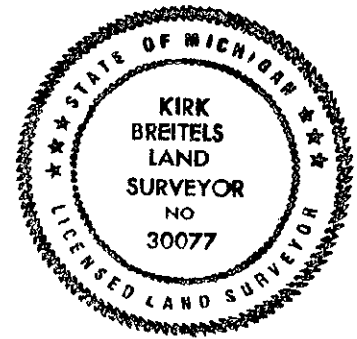
LCRC #4026	LCRC #5670
Nail & Remon. tag dbl. 36" Oak N05°W 31.85'	Nail & Remon. tag 36" Tw. Maple N05°W 31.81'
Nail & Remon. tag quad 12" Oak N83°E 43.88'	Nail & Remon. tag 8" -14" Quad Oak N83°E 43.88'
Nail & Remon. tag 24" Maple S25°E 66.80'	Nail & Remon. tag 22" Tw. Oak N77°W 50.98'
Nail & Remon. tag dbl. 36" Oak N77°W 50.97'	Nail & Remon. tag 22" Oak N45°W 64.71'
Nail & Remon. tag 20" Oak N45°W 64.71'	Face of 12" dia. wood post is South 0.9'
Face of 1' dia. wood post South 0.9'	Centerline of E-W lane is North 20'

The selected location is accepted by me and is generally accepted by professional surveyors as the best available evidence of the position of the original corner.

C. Description of monument for corner and accessories established to perpetuate locating the position of the corner:

E-12 Standard Kent County Monument

Nail & KC Remon. tag NE side Tw. 28" Maple	S25°E 66.82'
Nail & KC Remon. tag E. side 36" Tw. Maple	N05°W 31.75'
Nail & KC Remon. tag S. side 10"-16" Quad Oak	N83°E 43.91'
Nail & KC Remon. tag S. side Tw. 27" Oak	N77°W 51.01'
Nail & KC Remon. tag E. side 24" Oak	N45°W 64.69'
Face of 12" dia. wood post is South 0.9'	
C/L E-W lane is North 20'	



Signed by [Signature]  
Surveyor's Michigan License No. 30077

Date 2/19/98