

SURVEY & REMONUMENTATION

KENT COUNTY REMONUMENTATION

LAND CORNER RECORDATION CERTIFICATE
Filing Requirement of Act 74, Mich. P.A. 1970

\$7.00
\$2.00
MAR 08 1999
SECTION

STATE OF MICHIGAN
COUNTY OF KENT
REGISTERED FOR RECORD
98 MAR -5 AM 8:33
REG. OF DEEDS
[Signature]

For corners in

KENT COUNTY
(County)

Located In: Corner Code #

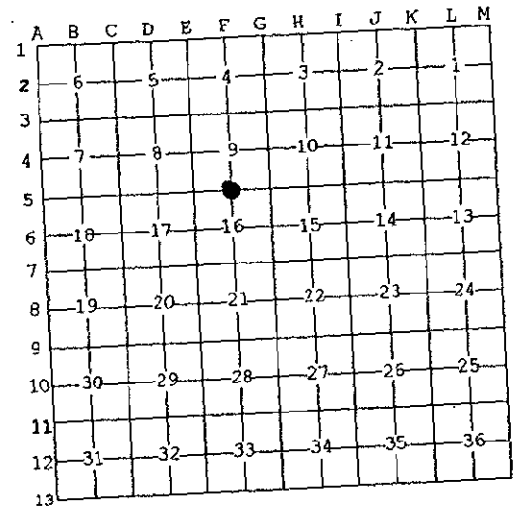
1. Public Land Survey	T <u>9</u> N R <u>11</u> W	F-5
	T <u> </u> R <u> </u>	_____
	T <u> </u> R <u> </u>	_____
	T <u> </u> R <u> </u>	_____
2. Property Controlling in Section	S <u> </u> T <u> </u> R <u> </u>	_____
	S <u> </u> T <u> </u> R <u> </u>	_____
3. Miscellaneous Property in Sec.	S <u> </u> T <u> </u> R <u> </u>	_____
	S <u> </u> T <u> </u> R <u> </u>	_____

10528

Register of Deeds Stamp & File Number

4. Lot No. _____, Recorded Plat _____
5. Private Claims _____

I, Kirk Breitels, in a field survey on Jan. 2, 19 98 do hereby state that under requirements of P.A. 74, Michigan P.A. of 1970, the corner points mentioned in lines 1 and 2 above were in conformance with regulations and rules therefore as required in the current manual of survey instructions of the United States Department of the Interior, Bureau of Land Management or by a decree of a Court of Law and /or that the corner points mentioned in lines 3, 4 and 5 above were in conformance with the rules of the Michigan Board of Land Surveyors or by a Decree of a Court of Law; established, re-established, monumented, recovered, found as expressed below:



NOTE: Not more than 2 corners, all in the same town and range, may be recorded on this certificate.

A. Description of original monument and accessories and/or subsequent restoration:

F-5	1837	GLO	Whitcomb	Set Post
	1966	Williams & Works		Point on N-S fence line
	1979	LCRC #3402	E. Glaza	RR Spike
	1984	LCRC #3787	Byl	Set Kent County Monument
	1990	LCRC #5674	Marschall	Kent County Monument

P.A. 345 1990 KENT COUNTY
PEER APPROVED 2/19/98
CHAIRMAN *[Signature]*

The position of this corner was previously approved by the Kent County Remonumentation Peer Group, monumented by William R. Byl on 3-28-84 and was recorded per LCRC #3787.

B. Description of corner evidence found and/or method applied in restoring or reestablishing corner:

F-5 Found Kent County Monument (Harrison) per witnesses from above LCRC as set by William R. Byl in place RR Spike over a Stone of the he found. Said RR spike over Stone checks with Williams & Works and LCRC #3402.
LCRC #3787

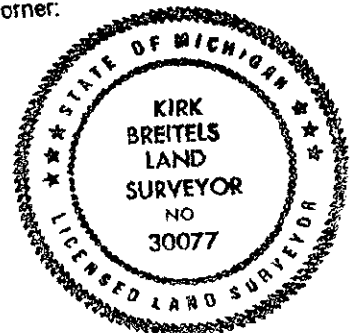
Nail & Remon. tag 12" Twin Oak	S00°W 60.61'	Nail & Remon. tag 34" Maple	N60°E 76.34'
Nail & Remon. tag 30" Maple	N60°E 76.39'	Nail & Remon. tag P.P.	N24°E 129.92'
Nail & Remon. tag P. Pole	N20°E 129.94'	"X" cut top culvert	S62°E 52.06'
"X" cut top culvert	S45°E 52.05'	"X" cut top culvert	N22°E 26.08'
		"X" cut top culvert	N66°E 49.79'

The selected location is accepted by me and is generally accepted by professional surveyors as the best available evidence of the position of the original corner.

C. Description of monument for corner and accessories established to perpetuate locating the position of the corner:

F-5 Standard Kent County Monument

Nail & KC Remon. tag S. side 36" Maple	N60°E 76.37'
Nail & KC Remon. tag E. side P. Pole	N24°E 129.93'
"X" cut in top S. end N-S culvert	S62°E 52.06'
"X" cut in top W. end E-W culvert	N22°E 26.08'
"X" cut in top N. end N-S culvert	N66°E 49.79'
Nail & KC Remon. tag E. side 6" Oak	S05°E 28.01'



Signed by *[Signature]*
Surveyor's Michigan License No. 30077

Date 2/19/98