

SURVEY & REMONUMENTATION

MAR 08 1999

KENT COUNTY REMONUMENTATION

\$7.00
\$2.00

SECTION

LAND CORNER RECORDATION CERTIFICATE
Filing Requirement of Act 74, Mich. P.A. 1970

STATE OF MICHIGAN
COUNTY OF KENT
RECEIVED FOR RECORD
98 MAR -5 AM 8:33
REG. OF DEEDS
Lucy Sand

For corners in

KENT COUNTY (County)	Located In:	Corner Code #
1. Public Land Survey	T 9N R 11W	F-7
	T R	
	T R	
	T R	
2. Property Controlling in Section	S T R	
	S T R	
3. Miscellaneous Property in Sec.	S T R	
	S T R	

10529

Register of Deeds Stamp & File Number

4. Lot No. _____, Recorded Plat _____
5. Private Claims _____

Kirk Breitels, in a field survey on Feb. 17, 1998 do hereby state that under requirements of P.A. 74, Michigan P.A. of 1970, the corner points mentioned in lines 1 and 2 above were in conformance with regulations and rules therefore as required in the current manual of survey instructions of the United States Department of the Interior, Bureau of Land Management or by a decree of a Court of Law and/or that the corner points mentioned in lines 3, 4 and 5 above were in conformance with the rules of the Michigan Board of Land Surveyors or by a Decree of a Court of Law; established, re-established, monumented, recovered, found as expressed below:

	A	B	C	D	E	F	G	H	I	J	K	L	M
1													
2	6		5		4		3		2		1		
3													
4	7		8		9		10		11		12		
5													
6	18		17		16		15		14		13		
7													
8	19		20		21		22		23		24		
9													
10	30		29		28		27		26		25		
11													
12	31		32		33		34		35		36		
13													

NOTE: Not more than 2 corners, all in the same town and range, may be recorded on this certificate.

- A. Description of original monument and accessories and/or subsequent restoration:
- | | | | | |
|-----|------|------------------|-----------|--------------------------------------|
| F-7 | 1837 | GLO | Whitcomb | Set Post |
| | 1950 | Kent Co. Wits | | 1" Pipe |
| | 1954 | Williams & Works | | Iron |
| | 1983 | LCRC #3674 | Bueche | Set Kent County Monument in Mon. Box |
| | 1990 | LCRC #5675 | Marschall | Kent County Monument |

P.A. 345 1990 KENT COUNTY
PEER APPROVED 2/19/98
CHAIRMAN Harry Huber

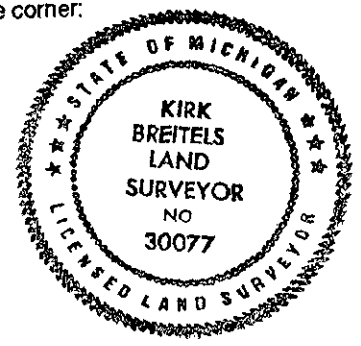
The position of this corner was previously approved by the Kent County Remonumentation Peer Group, monumented by John C. Bueche on 12-12-83 and was recorded per LCRC #3674.

- B. Description of corner evidence found and/or method applied in restoring or reestablishing corner:
- F-7 Found Kent County Monument (Harrison) per witnesses from above LCRC as set by John C. Bueche in place of the 1" Iron he found inside a Mon. box. Said Iron checks with Kent Co. Wits. and Williams & Works information.
- | | | | |
|--------------------------------|---------------|--------------------------------|---------------|
| LCRC #3674 | | LCRC #5675 | |
| Nail & Remon. tag 8" Poplar | S15°E 55.37' | Nail & Remon. tag fence post | S01°E 50.78' |
| Nail & Remon. tag 10" Maple | N50°E 86.40' | Nail & Remon. tag P. Pole | S12°E 103.10' |
| SE cor. block house foundation | N25°W 141.50' | Nail & Remon. tag 12" Maple | N53°E 103.74' |
| PK Nail in fence post | S05°W 50.79' | Nail & Remon. tag 48" Maple | N11°E 38.71' |
| PK Nail Tel. Pole | S70°W 98.09' | Nail & Remon. tag P. Pole | N75°W 138.01' |
| PK Nail in 48" Oak | N15°E 38.72' | SSE cor. blk. house foundation | N30°W 141.42' |

The selected location is accepted by me and is generally accepted by professional surveyors as the best available evidence of the position of the original corner.

- C. Description of monument for corner and accessories established to perpetuate locating the position of the corner:

- F-7 Standard Kent County Monument in Mon. Box
- | | |
|--|---------------|
| Nail & KC Remon. tag E. side N. end fence post | S01°E 50.78' |
| Nail & KC Remon. tag E. side P. Pole | S12°E 103.18' |
| Nail & KC Remon. tag SE side 16" Maple | N53°E 103.74' |
| Nail & KC Remon. tag E. side 56" Maple | N11°E 38.79' |
| Nail & KC Remon. tag S. side P. Pole | N75°W 138.01' |
| SE corner conc. block foundation of Hse. #2005 | N30°W 141.48' |
- On C/L E-W blacktop road and on fence line to South ±



Signed by *Kirk Breitels*
Surveyor's Michigan License No. 30077

Date 2/19/98