

SURVEY & REMONUMENTATION

\$7.00  
\$2.00  
MAR 08 1999

KENT COUNTY REMONUMENTATION

LAND CORNER RECORDATION CERTIFICATE  
Filing Requirement of Act 74, Mich. P.A. 1970

For corners in SECTION

KENT COUNTY (County)	Located In:	Corner Code #
1. Public Land Survey	T 9N R 11W	F-11
	T R	
	T R	
	T R	
2. Property Controlling in Section	S T R	
	S T R	
3. Miscellaneous Property in Sec.	S T R	
	S T R	

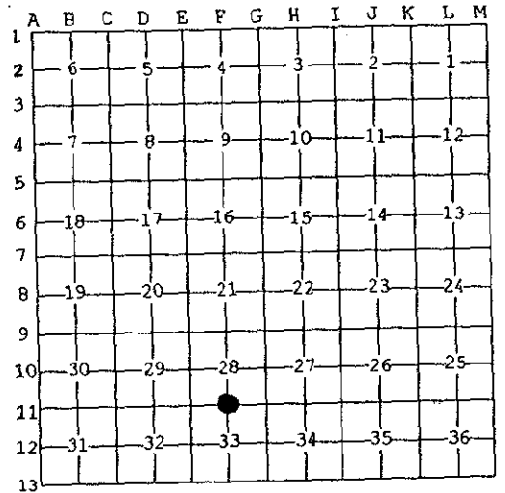
STATE OF MICHIGAN  
COUNTY OF KENT  
RECEIVED FOR RECORD  
99 MAR -5 AM 8:33  
REG. OF DEEDS  
*Lucy St. Paul*

10530

Register of Deeds Stamp & File Number

4. Lot No. \_\_\_\_\_, Recorded Plat \_\_\_\_\_  
5. Private Claims \_\_\_\_\_

I, Kirk Breitels, in a field survey on Jan. 2, 1998 do hereby state that under requirements of P.A. 74, Michigan P.A. of 1970, the corner points mentioned in lines 1 and 2 above were in conformance with regulations and rules therefore as required in the current manual of survey instructions of the United States Department of the Interior, Bureau of Land Management or by a decree of a Court of Law and/or that the corner points mentioned in lines 3, 4 and 5 above were in conformance with the rules of the Michigan Board of Land Surveyors or by a Decree of a Court of Law; established, re-established, monumented, recovered, found as expressed below:



NOTE: Not more than 2 corners, all in the same town and range, may be recorded on this certificate.

A. Description of original monument and accessories and/or subsequent restoration:

F-11 1837	GLO	Whitcomb	Set Post
	Kent Co. Wits		Leaded Stone
1974	LCRC #691	Bonnema	Leaded Stone
1974	LCRC #696	Spicer	"+" on Stone
1982	LCRC #2846	Jonker	Set Kent County Monument
1990	LCRC #5677	Marschall	Kent County Monument

P.A. 345 1900 KENT COUNTY

PEER APPROVED 2/19/98  
CHAIRMAN Harrison

The position of this corner was previously approved by the Kent County Remonumentation Peer Group, monumented by Robert J. Jonker on 4-19-82 and was recorded per LCRC #2846.

B. Description of corner evidence found and/or method applied in restoring or reestablishing corner:

F-11 Found Kent County Monument (Harrison) per witnesses from above LCRC as set by Robert J. Jonker in place of the Stone he found. Said Stone checks with Kent Co. Wits. and LCRC's #691 & #696

LCRC #2846	LCRC #5677
Nail & Remon. tag P. Pole N45°W 7.83'	Nail & Remon. tag 8" Pine S60°W 25.96'
Nail & Remon. tag P. Pole S35°E 88.84'	Nail & Remon. tag 26" Maple S85°W 19.50'
Nail & Remon. tag 10" Pine S35°W 49.7'	Nail & Remon. tag P.P. N45°W 7.80'
Nail & Remon. tag 8" Pine S60°W 23.94'	Nail & Remon. tag P.P. N45°E 83.18'
Nail & Remon. tag P. Pole N45°E 83.17'	Nail & Remon. tag P.P. S35°E 88.83'
C/L pavement SE'ly 23' ±	

The selected location is accepted by me and is generally accepted by professional surveyors as the best available evidence of the position of the original corner.

C. Description of monument for corner and accessories established to perpetuate locating the position of the corner:

F-11 Standard Kent County Monument

Nail & KC Remon. tag NW side 10" Pine	S60°W 25.96'
Nail & KC Remon. tag N. side 28" Maple	S85°W 19.50'
Nail & KC Remon. tag NE side P. Pole	N45°W 7.82'
Nail & KC Remon. tag NW side P. Pole	N45°E 83.24'
Nail & KC Remon. tag NE side P. Pole	S35°E 88.88'



Signed by *Kirk Breitels*  
Surveyor's Michigan License No. 30077

Date 2/19/98