

**SURVEY & REMONUMENTATION**

\$7.00  
\$2.00

MAR 08 1998

**KENT COUNTY REMONUMENTATION**

**SECTION**

**LAND CORNER RECORDATION CERTIFICATE**  
Filing Requirement of Act 74, Mich. P.A. 1970

STATE OF MICHIGAN  
COUNTY OF KENT  
RECEIVED FOR RECORD  
98 MAR -5 AM 8:33  
REG. OF DEEDS  
*Eric Spaul*

For corners in

KENT COUNTY  
(County)

Located in:

Corner Code #

1. Public Land Survey	T <u>9N</u>	R <u>11W</u>	G-1
	T	R	
	T	R	
	T	R	
2. Property Controlling in Section	S	T	R
	S	T	R
3. Miscellaneous Property in Sec.	S	T	R
	S	T	R

**10531**

Register of Deeds Stamp & File Number

4. Lot No. \_\_\_\_\_, Recorded Plat \_\_\_\_\_  
5. Private Claims \_\_\_\_\_

I, Kirk Breitels, in a field survey on Jan. 7, 1998 do hereby state that under requirements of P.A. 74, Michigan P.A. of 1970, the corner points mentioned in lines 1 and 2 above were in conformance with regulations and rules therefore as required in the current manual of survey instructions of the United States Department of the Interior, Bureau of Land Management or by a decree of a Court of Law and /or that the corner points mentioned in lines 3, 4 and 5 above were in conformance with the rules of the Michigan Board of Land Surveyors or by a Decree of a Court of Law; established, re-established, monumented, recovered, found as expressed below:

**NOTE:** Not more than 2 corners, all in the same town and range, may be recorded on this certificate.

A	B	C	D	E	F	G	H	I	J	K	L	M
1												
2	6		5		4		3		2		1	
3												
4	7		8		9		10		11		12	
5												
6	18		17		16		15		14		13	
7												
8	19		20		21		22		23		24	
9												
10	30		29		28		27		26		25	
11												
12	31		32		33		34		35		36	
13												

**A. Description of original monument and accessories and/or subsequent restoration:**

- G-1 1837 GLO Whitcomb Set Post 205.92' W. of G-13, T10N, R11W
- 1893-94 Williams & Works Stone
- 1960-68 Kent Co. Wits. Stone
- 1968 Consumers Power Co. 1" Iron
- 1971 Williams & Works Iron
- 1995 LCRC #8535 Breitels Set Kent County Monument

P.A. 345 1990 KENT COUNTY

PEER APPROVED 2/19/98  
CHAIRMAN *Harry P. Puhel*

The position of this corner was previously approved by the Kent County Remonumentation Peer Group, monumented by Kirk Breitels on 8-7-95 and was recorded per LCRC #8535.

**B. Description of corner evidence found and/or method applied in restoring or reestablishing corner:**

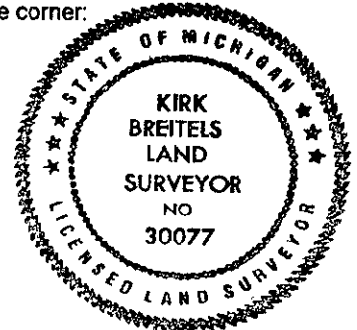
G-1 Found Kent County Monument (Harrison) per witnesses from above LCRC as set by Kirk Breitels on the Township Line 0.96' South of the 1" Steel Bar he found. Said Iron checks with Williams & Works and Consumers Power.  
LCRC #8535

- Nail & KC Remon. tag N. side 56" Oak S85°W 181.53'
- Nail & KC Remon. tag NE side P. Pole S45°E 103.65'
- Nail & KC Remon. tag N. side corner fence post S60°E 74.93'
- Nail & KC Remon. tag SE side 12" Sassafras N45°E 36.45'
- Nail & KC Remon. tag NE side 12" Sassafras North 33.55'
- 1" Steel Bar - North 0.96' Kent Co. Mon. (G-13, T10N, R11W) - East 205.82'

The selected location is accepted by me and is generally accepted by professional surveyors as the best available evidence of the position of the original corner.

**C. Description of monument for corner and accessories established to perpetuate locating the position of the corner:**

- G-1 Standard Kent County Monument
- Nail & KC Remon. tag N. side 56" Oak S85°W 181.53'
- Nail & KC Remon. tag NE side P. Pole S45°E 103.59'
- Nail & KC Remon. tag N. side corner fence post S60°E 74.89'
- Nail & KC Remon. tag SE side 12" Sassafras N45°E 36.45'
- Nail & KC Remon. tag NE side 12" Sassafras N35°W 33.55'
- Concrete Monument (2<sup>nd</sup> order GPS point) S55°E 126.95'
- 1" Steel Bar - North 0.96'
- Kent Co. Mon. (G-13, T10N, R11W) - East 205.82'



Signed by *Kirk Breitels*  
Surveyor's Michigan License No. 30077

Date 2/19/98