

MAR 08 1999

KENT COUNTY REMONUMENTATION

SECTION

LAND CORNER RECORDATION CERTIFICATE
Filing Requirement of Act 74, Mich. P.A. 1970

For corners in
KENT COUNTY

Located In:	Corner Code #
1. Public Land Survey T 9N R 11W	G-5
T R	
T R	
T R	
2. Property Controlling in Section S T R	
S T R	
3. Miscellaneous Property in Sec. S T R	
S T R	

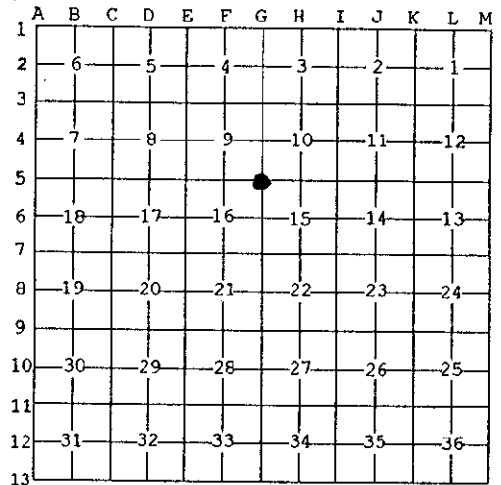
STATE OF MICHIGAN
COUNTY OF KENT
RECEIVED FOR RECORD
98 MAR -5 AM 8:33
REG. OF DEEDS
David J. ...

10534

Register of Deeds Stamp & File Number

4. Lot No. _____, Recorded Plat _____
5. Private Claims _____

I, Kirk Breitels, in a field survey on Jan. 28, 19 98 do hereby state that under requirements of P.A. 74, Michigan P.A. of 1970, the corner points mentioned in lines 1 and 2 above were in conformance with regulations and rules therefore as required in the current manual of survey instructions of the United States Department of the Interior, Bureau of Land Management or by a decree of a Court of Law and /or that the corner points mentioned in lines 3, 4 and 5 above were in conformance with the rules of the Michigan Board of Land Surveyors or by a Decree of a Court of Law; established, re-established, monumented, recovered, found as expressed below:



NOTE: Not more than 2 corners, all in the same town and range, may be recorded on this certificate.

A. Description of original monument and accessories and/or subsequent restoration:

G-5	1837	GLO	Whitcomb	Set Post
		Undated-1966	Williams & Works	Iron over Stone - Iron - Iron in Mon. Box
		1956	Kent Co. Wits	Iron
		1984	LCRC #3786	Byl
		1990	LCRC #5683	Marschall
				Set Kent County Monument in Mon. Box
				Kent County Monument

P.A. 345 1990 KENT COUNTY
PEER APPROVED 2/19/98
CHAIRMAN Harry Hube

The position of this corner was previously approved by the Kent County Remonumentation Peer Group, monumented by William R. Byl on 3-28-84 and was recorded per LCRC #3786.

B. Description of corner evidence found and/or method applied in restoring or reestablishing corner:

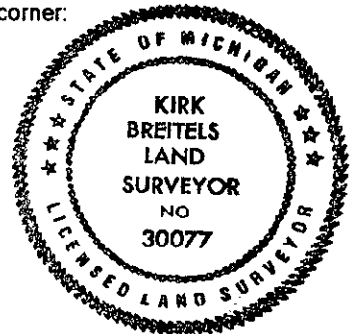
G-5 Found Kent County Monument (Harrison) per witnesses from above LCRC as set by William R. Byl in place of the Iron Pipe he found inside a Mon. Box. Said Iron Pipe checks with Williams & Works information and Kent Co. Wits. LCRC #3786 LCRC #5683

Nail & Remon. tag 8" Pine	S45°E	118.80'	Nail & Remon. tag 10" Pine	S45°E	118.82'
Nail & Remon. tag P. Pole	N60°E	142.25'	C/L top R.O.W. marker	S74°E	121.46'
"X" cut top N. end 6' CMP	N75°W	93.47'	Nail & Remon. tag P. Pole	N79°E	124.97'
"X" cut top S. end 6' CMP	S75°W	94.02'	Nail & Remon. tag Light Pole	N43°E	49.78'
			"X" cut top of N. end 72" CMP	N63°W	93.45'
			"X" cut top of S. end 72" CMP	S72°W	94.14'

The selected location is accepted by me and is generally accepted by professional surveyors as the best available evidence of the position of the original corner.

C. Description of monument for corner and accessories established to perpetuate locating the position of the corner:

G-5 Standard Kent County Monument in Mon. Box		
Nail & KC Remon. tag S. side 16" Pine	S45°E	118.82'
C/L top concrete R.O.W. marker	S74°E	121.46'
Nail & KC Remon. tag S. side P. Pole	N79°E	125.01'
Nail & KC Remon. tag SE side Guy Pole	N43°E	49.82'
"X" cut in top of N. end 72" CMP	N63°W	93.45'
"X" cut in top of S. end 72" CMP	S72°W	94.14'



Signed by *Kirk Breitels*
Surveyor's Michigan License No. 30077

Date 2/19/98