

FEB 08 1998

\$7.00
\$2.00

SECTION

KENT COUNTY REMONUMENTATION

LAND CORNER RECORDATION CERTIFICATE
Filing Requirement of Act 74, Mich. P.A. 1970

For corners in

KENT COUNTY

(County)

Located In:

Corner Code #

1. Public Land Survey	T 9N	R 11W	G-9
	T	R	
	T	R	
	T	R	
2. Property Controlling in Section	S	T	R
	S	T	R
3. Miscellaneous Property in Sec.	S	T	R
	S	T	R

STATE OF MICHIGAN
COUNTY OF KENT
RECEIVED FOR RECORD
98 MAR -5 AM 8:33
REG. OF DEEDS
David Stander

10538

Register of Deeds Stamp & File Number

4. Lot No. _____, Recorded Plat _____
5. Private Claims _____

I, Kirk Breitels, in a field survey on Feb. 2, 19 98 do hereby state that under requirements of P.A. 74, Michigan P.A. of 1970, the corner points mentioned in lines 1 and 2 above were in conformance with regulations and rules therefore as required in the current manual of survey instructions of the United States Department of the Interior, Bureau of Land Management or by a decree of a Court of Law and /or that the corner points mentioned in lines 3, 4 and 5 above were in conformance with the rules of the Michigan Board of Land Surveyors or by a Decree of a Court of Law; established, re-established, monumented, recovered, found as expressed below:

NOTE: Not more than 2 corners, all in the same town and range, may be recorded on this certificate.

	A	B	C	D	E	F	G	H	I	J	K	L	M
1													
2	6		5		4		3		2		1		
3													
4	7		8		9		10		11		12		
5													
6	18		17		16		15		14		13		
7													
8	19		20		21		22		23		24		
9													
10	30		29		28		27		26		25		
11													
12	31		32		33		34		35		36		
13													

A. Description of original monument and accessories and/or subsequent restoration:

G-9	1837	GLO	Whitcomb	Set Post
	1972	Kent Co. Wits		Mon. Box
	1975	LCRC #899	Spicer	1" Iron in Mon. Box
	1981	LCRC #2470	Jonker	Set Kent County Monument in Mon. Box
	1990	LCRC #5687	Marschall	Kent County Monument

P.A. 345 1990 KENT COUNTY
PEER APPROVED 2/19/98
CHAIRMAN *Harry Stuber*

The position of this corner was previously approved by the Kent County Remonumentation Peer Group, monumented by Robert J. Jonker on 11-17-81 and was recorded per LCRC #2470.

B. Description of corner evidence found and/or method applied in restoring or reestablishing corner:

G-9 Found Kent County Monument (Harrison) per witnesses from above LCRC as set by Robert J. Jonker in place of the 3/4" Iron he found inside a Mon. Box. Said Iron checks with Kent Co. Wits. and LCRC #899.

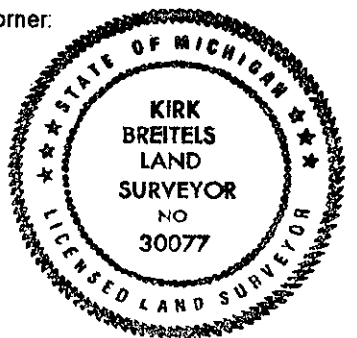
LCRC #2470	LCRC #5687		
PK Nail in curb joint	N62°W 41.60'	Chiseled "X" on conc. hdwl.	N86°W 156.01'
PK Nail in curb joint	S50°W 36.00'	Chiseled "X" on N. end conc. culv.	N58°W 58.92'
Nail & Remon. tag in curb joint	N52°E 36.57'	Chiseled "X" on S. end conc. culv.	S57°W 59.43'
Nail & Remon. tag P. Pole	S15°E 104.48'	PK Nail in curb joint	N65°W 41.58'
On C/L "X" of pavement		Nail & Remon. tag P. Pole	S18°E 104.42'

The selected location is accepted by me and is generally accepted by professional surveyors as the best available evidence of the position of the original corner.

C. Description of monument for corner and accessories established to perpetuate locating the position of the corner:

G-9 Standard Kent County Monument in Mon. Box

"X" cut on N. end concrete culvert	N58°W	58.96'
"X" cut on S. end concrete culvert	S57°W	59.43'
PK Nail in curb joint	N65°W	41.61'
Nail & KC Remon. tag W. side P. Pole	S18°E	104.46'
C/L top of R/W monument	N15°E	121.54'
C/L top of R/W monument	N15°W	121.41'
On C/L "X" pavement		



Signed by *Kirk Breitels*
Surveyor's Michigan License No. 30077

Date 2/19/98