

\$7.00
\$2.00

MAR 08 1999

KENT COUNTY REMONUMENTATION

SECTION

LAND CORNER RECORDATION CERTIFICATE
Filing Requirement of Act 74, Mich. P.A. 1970

For corners in

KENT COUNTY
(County)

Located In:

Corner Code #

- 1. Public Land Survey T 9N R 11W I-11
 T _____ R _____
 T _____ R _____
 T _____ R _____
- 2. Property Controlling S _____ T _____ R _____
 in Section S _____ T _____ R _____
- 3. Miscellaneous S _____ T _____ R _____
 Property in Sec. S _____ T _____ R _____

- 4. Lot No. _____, Recorded Plat _____
- 5. Private Claims _____

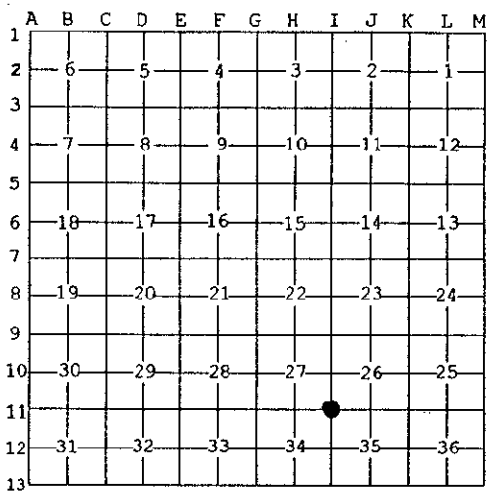
STATE OF MICHIGAN
 COUNTY OF KENT
 RECEIVED FOR RECORD
 98 MAY 21 AM 8:32
 REG. OF DEEDS
Lucy Stand

10614

Register of Deeds Stamp & File Number

I, Kirk Breitels, in a field survey on Feb. 25, 19 98 do hereby state that under requirements of P.A. 74, Michigan P.A. of 1970, the corner points mentioned in lines 1 and 2 above were in conformance with regulations and rules therefore as required in the current manual of survey instructions of the United States Department of the Interior, Bureau of Land Management or by a decree of a Court of Law and /or that the corner points mentioned in lines 3, 4 and 5 above were in conformance with the rules of the Michigan Board of Land Surveyors or by a Decree of a Court of Law; established, re-established, monumented, recovered, found as expressed below:

NOTE: Not more than 2 corners, all in the same town and range, may be recorded on this certificate.



A. Description of original monument and accessories and/or subsequent restoration:

I-11	1837	GLO	Whitcomb	Set Post
	1964	Kent Co. Wits		1/2" Iron
	1974	LCRC #682	Bonnema	1/2" Iron
	1981	LCRC #2502	Hay	Set Kent County Monument
	1994	LCRC #7032	Byl	Kent County Monument

P.A. 345 1990 KENT COUNTY
 PEER APPROVED 4/30/98
 CHAIRMAN Harry Huber

The position of this corner was previously approved by the Kent County Remonumentation Peer Group, monumented by Clayton S. Hay on 12-16-81 and was recorded per LCRC #2502.

B. Description of corner evidence found and/or method applied in restoring or reestablishing corner:

I-11 Found Kent County Mon. (Harrison) 10" below newly paved road per witnesses from above LCRC as set by Clayton S. Hay in place of the 3/4" Iron he found. Iron checks Kent Co. Wits. & LCRC #682. Grouted 9" riser over Mon..

LCRC #2502	LCRC #7032
Nail & Remon. tag 18" Butternut N20°E 80.55'	Nail & Remon. tag 26" Butternut N20°E 80.74'
Nail & Remon. tag 18" Hickory N68°E 86.32'	Nail & Remon. tag 24" Hickory N68°E 86.26'
Nail & Remon. tag 24" Oak S75°E 89.90'	Nail & Remon. tag 30" Oak S75°E 89.80'
Nail & Remon. tag 6" Oak S63°W 63.38'	Nail & Remon. tag 12" Oak S63°W 63.44'
Nail & Remon. tag MBT Pole N54°W 51.73'	Nail & Remon. tag P. Pole N65°W 77.69'
Glaza capped Iron S45°W 46.62'	Glaza capped Iron S45°W 46.58'

The selected location is accepted by me and is generally accepted by professional surveyors as the best available evidence of the position of the original corner.

C. Description of monument for corner and accessories established to perpetuate locating the position of the corner:

I-11 Standard Kent County Monument

Nail & KC Remon. tag NW 26" Butternut	N20°E	80.47'	(new nail 4' higher)
Nail & KC Remon. tag S. side 24" Hickory	N68°E	86.30'	
Nail & KC Remon. tag N. side 30" Oak	S75°E	89.78'	
Nail & KC Remon. tag NW side 16" Oak	S63°W	63.34'	
Nail & KC Remon. tag SW side P. Pole	N65°W	77.65'	(new nail 6' higher)

At C/L "X" roads N-S-E-W ±



Signed by *Kirk Breitels*
 Surveyor's Michigan License No. 30077

Date 4/30/98