

MAR 08 1999

**KENT COUNTY REMONUMENTATION**

**SECTION**

**LAND CORNER RECORDATION CERTIFICATE**  
Filing Requirement of Act 74, Mich. P.A. 1970

For corners in

KENT COUNTY

(County)

Located In:

Corner Code #

- |                                    |  |       |
|------------------------------------|--|-------|
| 1. Public Land Survey              | T <u>9N</u> R <u>11W</u>               | J-10  |
|                                    | T <u>   </u> R <u>   </u>              | _____ |
|                                    | T <u>   </u> R <u>   </u>              | _____ |
|                                    | T <u>   </u> R <u>   </u>              | _____ |
| 2. Property Controlling in Section | S <u>   </u> T <u>   </u> R <u>   </u> | _____ |
|                                    | S <u>   </u> T <u>   </u> R <u>   </u> | _____ |
| 3. Miscellaneous Property in Sec.  | S <u>   </u> T <u>   </u> R <u>   </u> | _____ |
|                                    | S <u>   </u> T <u>   </u> R <u>   </u> | _____ |

REG. OF DEEDS

*David Bond*

98 OCT -7 AM 10:15

STATE OF MICHIGAN  
COUNTY OF KENT  
RECEIVED FOR RECORD

**10691**

Register of Deeds Stamp & File Number

4. Lot No. \_\_\_\_\_, Recorded Plat \_\_\_\_\_  
5. Private Claims \_\_\_\_\_

I, Kirk Breitels, in a field survey on Aug. 24, 1998 do hereby state that under requirements of P.A. 74, Michigan P.A. of 1970, the corner points mentioned in lines 1 and 2 above were in conformance with regulations and rules therefore as required in the current manual of survey instructions of the United States Department of the Interior, Bureau of Land Management or by a decree of a Court of Law and /or that the corner points mentioned in lines 3, 4 and 5 above were in conformance with the rules of the Michigan Board of Land Surveyors or by a Decree of a Court of Law; established, re-established, monumented, recovered, found as expressed below:

NOTE: Not more than 2 corners, all in the same town and range, may be recorded on this certificate.

A	B	C	D	E	F	G	H	I	J	K	L	M
1												
2	6		5		4		3		2		1	
3												
4	7		8		9		10		11		12	
5												
6	18		17		16		15		14		13	
7												
8	19		20		21		22		23		24	
9												
10	30		29		28		27		26		25	
11												
12	31		32		33		34		35		36	
13												

- A. Description of original monument and accessories and/or subsequent restoration:
- J-10 1837 GLO Williams & Works Kent Co. Wits Not Set No information Stone  
 MBT Pole North 2.55' MBT Pole South 13.79' 16" Pine East 24.74'
- 1975 LCRC #897 Bonnema Stone with "X" on top  
 MSHD tag in MBT Pole North 2.55' MSHD tag in MBT Pole South 13.78'  
 MSHD tag in 16" Pine East 24.68' On fence line E-W and N-S

P.A. 345 1990 KENT COUNTY  
PEER APPROVED 9/24/98  
CHAIRMAN Harry Huber

B. Description of corner evidence found and/or method applied in restoring or reestablishing corner:

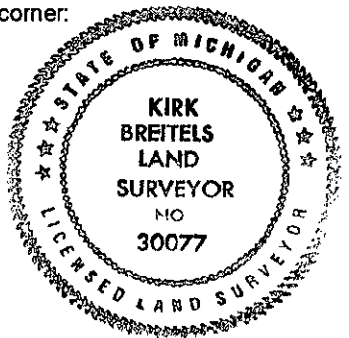
J-10 Found nothing at corner. Both MBT Poles per witnesses have been removed - Stone may have been moved during the removal of the MBT Poles - later found stone with "X" on top lying on it's side 10' Southerly of corner location.

Established location per the witness to the 24" Pine (MSHD tag found) and a distance South from an Exxel Engineering stake found 413.00' North (per 1975 survey). This location checks ± a Nederveld & Jonker stake found 100' feet East. The "Stone" has also been used by Iackbardt, All Points, and Hay and fits measurements ± of surveys. This location is 3.2' E. and 1.6' N. of intersection of 1/4 lines.

The location described above is accepted by me and is generally accepted by professional surveyors as the best available evidence of the position of the corner.

C. Description of monument for corner and accessories established to perpetuate locating the position of the corner:

- J-10 Set Standard Kent County Monument at the location described above.
- |  |       |        |
|--|-------|--------|
| Nail & KC Remon. tag NE side 12" Maple | S45°E | 34.53' |
| Nail & KC Remon. tag N. side 24" Pine  | S90°E | 24.69' |
| Nail & KC Remon. tag W. side 12" Pine  | N15°E | 31.44' |
| Nail & KC Remon. tag S. side 12" Oak   | N85°W | 17.18' |
| Nail & KC Remon. tag SE side 14" Maple | S40°W | 23.94' |
| On fence line to East ±                |       |        |



Signed by *Kirk Breitels*  
Surveyor's Michigan License No. 30077

Date 9/29/98