

SURVEY & REMONUMENTATION

MAR 08 1999

KENT COUNTY REMONUMENTATION

LAND CORNER RECORDATION CERTIFICATE
Filing Requirement of Act 74, Mich. P.A. 1970

\$7.00
\$2.00

SECTION _____

STATE OF MICHIGAN
COUNTY OF KENT
RECEIVED FOR RECORD
98 MAY 21 AM 8:32
REG. OF DEEDS
Lucy Stand

For corners in

KENT COUNTY

(County)

Located In:

Corner Code #

1. Public Land Survey

T 9NR 11W

J-11

T ___ R ___

T ___ R ___

T ___ R ___

T ___ R ___

2. Property Controlling in Section

S ___

T ___ R ___

S ___

T ___ R ___

3. Miscellaneous Property in Sec.

S ___

T ___ R ___

S ___

T ___ R ___

10615

Register of Deeds Stamp & File Number

4. Lot No. _____, Recorded Plat _____
5. Private Claims _____

I, Kirk Breitels, in a field survey on April 21, 19 98 do hereby state that under requirements of P.A. 74, Michigan P.A. of 1970, the corner points mentioned in lines 1 and 2 above were in conformance with regulations and rules therefore as required in the current manual of survey instructions of the United States Department of the Interior, Bureau of Land Management or by a decree of a Court of Law and /or that the corner points mentioned in lines 3, 4 and 5 above were in conformance with the rules of the Michigan Board of Land Surveyors or by a Decree of a Court of Law; established, re-established, monumented, recovered, found as expressed below:

NOTE: Not more than 2 corners, all in the same town and range, may be recorded on this certificate.

	A	B	C	D	E	F	G	H	I	J	K	L	M
1													
2	6		5		4		3		2		1		
3													
4	7		8		9		10		11		12		
5													
6	18		17		16		15		14		13		
7													
8	19		20		21		22		23		24		
9													
10	30		29		28		27		26		25		
11													
12	31		32		33		34		35		36		
13													

A. Description of original monument and accessories and/or subsequent restoration:

J-11	1837	GLO	Whitcomb	Set Post
		Kent Co. Wits		Iron
1976		LCRC #904	McCloskey	Iron
1976		LCRC #1011	Nederveld	1/2" Iron
1978		LCRC #1241	Shangraw	3/4" Iron
1981		LCRC #2501	Hay	Set Kent County Monument
1994		LCRC #7039	Byl	Kent County Monument

P.A. 345 1990 KENT COUNTY

PEER APPROVED 4/30/98

CHAIRMAN Harry Hubell

The position of this corner was previously approved by the Kent County Remonumentation Peer Group, monumented by Clayton S. Hay on 12-16-81 and was recorded per LCRC #2501.

B. Description of corner evidence found and/or method applied in restoring or reestablishing corner:

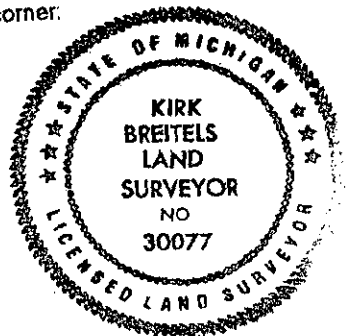
J-11 Found Kent County Monument (Harrison) per witnesses from above LCRC as set by Clayton S. Hay in place of the 1" Iron over a 3/4" Iron & Stones he found. All check with Kent Co. Wits and LCRC's #904, #1011, #1241.
LCRC #2501

Nail & Remon. tag 12" Cherry	N10°E 25.12'	Nail & Remon. tag 30" Oak	N73°E 88.29'
Nail & Remon. tag 16" Oak	N15°E 34.70'	Nail & Remon. tag 14" Ash clump	S65°E 65.52'
Nail & Remon. tag 12" Oak	N40°E 42.16'	Nail & Remon. tag 24" Oak	S63°W 65.33'
Nail & Remon. tag 19" Oak	N62°E 32.53'	Nail & Remon. tag 18" Ash	N70°W 85.89'
Nail & Remon. tag 9" Cherry	S06°E 47.20'	Iron - South 33'	
Nail & Remon. tag 7" Poplar	S35°E 40.87'		

The selected location is accepted by me and is generally accepted by professional surveyors as the best available evidence of the position of the original corner.

C. Description of monument for corner and accessories established to perpetuate locating the position of the corner:

J-11 Standard Kent County Monument		N73°E 88.29'	
Nail & KC Remon. tag S. side 30" Oak		S65°E 65.52'	
Nail & KC Remon. tag S. side 14" Ash clump		S63°W 65.26'	
Nail & KC Remon. tag NW side 24" Oak		N70°W 85.89'	
Nail & KC Remon. tag S. side 18" Ash			
Iron - South 33.46' (leaning)			



Signed by Kirk Breitels
Surveyor's Michigan License No. 30077

Date 4/30/98