

\$7.00
\$2.00
MAR 08 1999

KENT COUNTY REMONUMENTATION

SECTION

LAND CORNER RECORDATION CERTIFICATE
Filing Requirement of Act 74, Mich. P.A. 1970

STATE OF MICHIGAN
COUNTY OF KENT
RECEIVED FOR RECORD
98 MAR -5 AM 8:34
REG. OF DEEDS
Lucy Bond

For corners in

KENT COUNTY
(County)

Located in:

Corner Code #

1. Public Land Survey	T 9N R 11W	K-4
	T R	
	T R	
	T R	
	T R	
2. Property Controlling in Section	S T R	
	S T R	
3. Miscellaneous Property in Sec.	S T R	
	S T R	

10561

Register of Deeds Stamp & File Number

- 4. Lot No. _____, Recorded Plat _____
- 5. Private Claims _____

I, Kirk Breitels, in a field survey on Jan. 2, 1998 do hereby state that under requirements of P.A. 74, Michigan P.A. of 1970, the corner points mentioned in lines 1 and 2 above were in conformance with regulations and rules therefore as required in the current manual of survey instructions of the United States Department of the Interior, Bureau of Land Management or by a decree of a Court of Law and /or that the corner points mentioned in lines 3, 4 and 5 above were in conformance with the rules of the Michigan Board of Land Surveyors or by a Decree of a Court of Law; established, re-established, monumented, recovered, found as expressed below:

NOTE: Not more than 2 corners, all in the same town and range, may be recorded on this certificate.

A	B	C	D	E	F	G	H	I	J	K	L	M
1												
2	6		5		4		3		2		1	
3												
4	7		8		9		10		11	●	12	
5												
6	18		17		16		15		14		13	
7												
8	19		20		21		22		23		24	
9												
10	30		29		28		27		26		25	
11												
12	31		32		33		34		35		36	
13												

A. Description of original monument and accessories and/or subsequent restoration:

K-4	1837	GLO	Whitcomb	Set Post
	1964	Kent Co. Wits		Iron
	1974	LCRC #751	Spicer	Conc. Mon.
	1982	LCRC #2514	Starr	Set Kent County Monument in Mon. Box
	1994	LCRC #7043	Byl	Kent County Monument in Mon. Box

P.A. 345 1990 KENT COUNTY
PEER APPROVED 2/19/98
CHAIRMAN *Harry Huber*

The position of this corner was previously approved by the Kent County Remonumentation Peer Group, monumented by Thomas C. Starr on 1-5-82 and was recorded per LCRC #2514.

B. Description of corner evidence found and/or method applied in restoring or reestablishing corner:

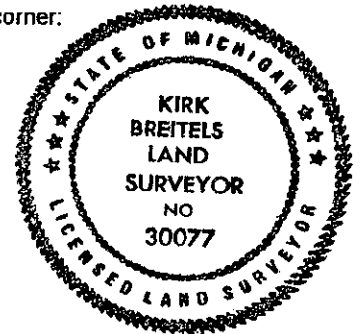
K-4 Found Kent County Monument (Harrison) per witnesses from above LCRC as set by Thomas C. Starr in place of the 3/4" Iron Pipe over a Conc. Nail he found inside a Mon. box. Both check with Kent Co. Wits and LCRC #751.

LCRC #2514	Nail & Remon. tag P. Pole	S50°W 91.54'	LCRC #7043	Nail & Remon. tag 12" Pine	S30°W 91.20'
	Nail & Remon. tag 6" Pine	S30°W 91.20'		Nail & Remon. tag P. Pole	S15°E 139.87'
	Nail & Remon. tag P. Pole	S15°E 139.87'		Nail & Remon. tag 18" Maple	N20°E 72.40'
	Nail & Remon. tag 16" Maple	N20°E 72.38'		Nail & Remon. tag P. Pole	S70°W 56.51'
	SW cor. house (frame)	N35°W 120.95'		SW cor. hse. (frame)	N35°E 120.75'
	NW cor. house (fdn.)	S35°E 161.85'		NW cor. hse. (fdn.)	S35°E 161.85'

The selected location is accepted by me and is generally accepted by professional surveyors as the best available evidence of the position of the original corner.

C. Description of monument for corner and accessories established to perpetuate locating the position of the corner:

K-4 Standard Kent County Monument in Mon. Box	Nail & KC Remon. tag E. side 12" Pine	S30°W 91.20'
	Nail & KC Remon. tag W. side 18" Maple	N20°E 72.40'
	Nail & KC Remon. tag NW side P. Pole	S70°W 56.51'
	SW corner frame house	N35°E 120.75'
	NW corner house foundation	S35°E 161.85'
	Nail & KC Remon. tag S. side Guy Pole	N70°W 75.10'



Signed by *Kirk Breitels*
Surveyor's Michigan License No. 30077

Date 2/19/98