

MAR 08 1999

\$7.00
\$2.00

SECTION

KENT COUNTY REMONUMENTATION

LAND CORNER RECORDATION CERTIFICATE
Filing Requirement of Act 74, Mich. P.A. 1970

For corners in

KENT COUNTY

(County)

Located In:

Corner Code #

1. Public Land Survey

T 9N R 11W

K-5

T R

T R

T R

T R

2. Property Controlling in Section

S

T R

S

T R

3. Miscellaneous

S

T R

Property in Sec.

S

T R

4. Lot No. , Recorded Plat

5. Private Claims

I, Kirk Breitels, in a field survey on Jan. 19, 1998 do hereby state that under requirements of P.A. 74, Michigan P.A. of 1970, the corner points mentioned in lines 1 and 2 above were in conformance with regulations and rules therefore as required in the current manual of survey instructions of the United States Department of the Interior, Bureau of Land Management or by a decree of a Court of Law and /or that the corner points mentioned in lines 3, 4 and 5 above were in conformance with the rules of the Michigan Board of Land Surveyors or by a Decree of a Court of Law; established, re-established, monumented, recovered, found as expressed below:

NOTE: Not more than 2 corners, all in the same town and range, may be recorded on this certificate.

A. Description of original monument and accessories and/or subsequent restoration:

K-5 1837 GLO Whitcomb Set Post
1964 Kent Co. Wits Mon. Box
1974 LCRC #751 Spicer 1" Iron in Mon. Box
1982 LCRC #2515 Starr Set Kent County Monument in Mon. Box
1994 LCRC #7044 Byl Reset Kent County Monument

The position of this corner was previously approved by the Kent County Remonumentation Peer Group, monumented by Thomas C. Starr on 1-5-82 and was recorded per LCRC #2515.

B. Description of corner evidence found and/or method applied in restoring or reestablishing corner:

K-5 Found Kent Co. Mon. (Harrison) per wit. from above LCRC as set by W.R. Byl at the same location as set in 1982 by Thomas C. Starr in place of a 1" Solid Iron he found inside a Mon. Box. Iron checks Kent Co. Wits. and LCRC #751.
LCRC #2515 LCRC #7044

Nail & Remon. tag 18" Maple S40°W 125.42' Nail & Remon. tag 24" Maple S40°W 125.68'
NW cor. conc. curb & gutter N20°W 80.03' NW cor. conc. curb & gutter N20°W 80.10'
NW cor. conc. curb & gutter N55°W 59.17' NW cor. conc. curb & gutter N55°W 59.40'
NE cor. conc. curb & gutter N65°W 75.83' NE cor. conc. curb & gutter N65°E 75.84'
NW cor. conc. curb & gutter N20°E 78.44' NW cor. conc. curb & gutter N20°E 78.48'
C/L traffic sign post S65°E 96.10' Nail & Remon. tag top guard rail post S45°E 50.23'

The selected location is accepted by me and is generally accepted by professional surveyors as the best available evidence of the position of the original corner.

C. Description of monument for corner and accessories established to perpetuate locating the position of the corner:

K-5 Standard Kent County Monument
Nail & KC Remon. tag NW side 24" Maple S40°W 125.68'
NW corner conc. curb & gutter N20°W 80.10'
NW corner conc. curb & gutter N55°W 59.40'
NE corner conc. curb & gutter N65°E 75.84'
NW corner conc. curb & gutter N20°E 78.48'
Nail & KC Remon. tag top guard rail post S45°E 50.23'
Nail & KC Remon. tag top guard rail post S10°W 38.74'

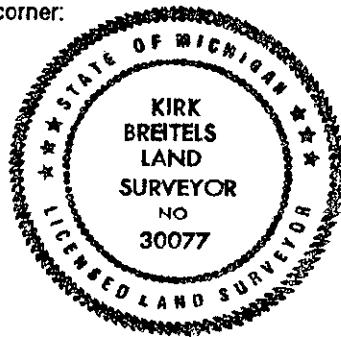
STATE OF MICHIGAN
COUNTY OF KENT
RECEIVED FOR RECORD
98 MAR -5 AM 8:34
REG. OF DEEDS
Luigi Standa

10562

Register of Deeds Stamp & File Number

Grid with columns A-M and rows 1-13. A dot is present at row 5, column K.

P.A. 345 1990 KENT COUNTY
PEER APPROVED 2/19/98
CHAIRMAN Harry Hubert



Signed by *Kirk Breitels*
Surveyor's Michigan License No. 30077

Date 2/19/98