

SURVEY & REMONUMENTATION

\$7.00 APR 9 8 1999
\$2.00
SECTION

KENT COUNTY REMONUMENTATION

LAND CORNER RECORDATION CERTIFICATE
Filing Requirement of Act 74, Mich. P.A. 1970

STATE OF MICHIGAN
COUNTY OF KENT
RECEIVED FOR RECORD
98 MAR -5 AM 8:34
REG. OF DEEDS
Lucy Bond

For corners in
KENT COUNTY
(County)

| Located In: | Corner Code # |
|-------------|---------------|
| T 9N R 11W | K-6 |
| T R | |
| T R | |
| T R | |
| T R | |
| S T R | |
| S T R | |
| S T R | |
| S T R | |

- 1. Public Land Survey
- 2. Property Controlling in Section
- 3. Miscellaneous Property in Sec.

10563

Register of Deeds Stamp & File Number

- 4. Lot No. _____, Recorded Plat _____
- 5. Private Claims _____

I, Kirk Breitels, in a field survey on Feb. 5, 1998 do hereby state that under requirements of P.A. 74, Michigan P.A. of 1970, the corner points mentioned in lines 1 and 2 above were in conformance with regulations and rules therefore as required in the current manual of survey instructions of the United States Department of the Interior, Bureau of Land Management or by a decree of a Court of Law and /or that the corner points mentioned in lines 3, 4 and 5 above were in conformance with the rules of the Michigan Board of Land Surveyors or by a Decree of a Court of Law; established, re-established, monumented, recovered, found as expressed below:

NOTE: Not more than 2 corners, all in the same town and range, may be recorded on this certificate.

| | | | | | | | | | | | | |
|----|----|----|----|----|----|----|---|---|---|---|---|---|
| A | B | C | D | E | F | G | H | I | J | K | L | M |
| 1 | | | | | | | | | | | | |
| 2 | 6 | 5 | 4 | 3 | 2 | 1 | | | | | | |
| 3 | | | | | | | | | | | | |
| 4 | 7 | 8 | 9 | 10 | 11 | 12 | | | | | | |
| 5 | | | | | | | | | | | | |
| 6 | 18 | 17 | 16 | 15 | 14 | 13 | | | | | | |
| 7 | | | | | | | | | | | | |
| 8 | 19 | 20 | 21 | 22 | 23 | 24 | | | | | | |
| 9 | | | | | | | | | | | | |
| 10 | 30 | 29 | 28 | 27 | 26 | 25 | | | | | | |
| 11 | | | | | | | | | | | | |
| 12 | 31 | 32 | 33 | 34 | 35 | 36 | | | | | | |
| 13 | | | | | | | | | | | | |

A. Description of original monument and accessories and/or subsequent restoration:

| | | | | |
|-----|------|---------------|------------|--------------------------|
| K-6 | 1837 | GLO | Whitcomb | Set Post |
| | 1964 | Kent Co. Wits | | "X" on Stone |
| | 1980 | LCRC #1368 | Merdzinski | "X" on Stone |
| | 1982 | LCRC #3018 | Starr | Set Kent County Monument |
| | 1994 | LCRC #7045 | Byl | Kent County Monument |

P.A. 345 1990 KENT COUNTY
PEER APPROVED 2/19/98
CHAIRMAN Harry Huber

The position of this corner was previously approved by the Kent County Remonumentation Peer Group, monumented by Thomas C. Starr on 8-2-82 and was recorded per LCRC #3018.

B. Description of corner evidence found and/or method applied in restoring or reestablishing corner:

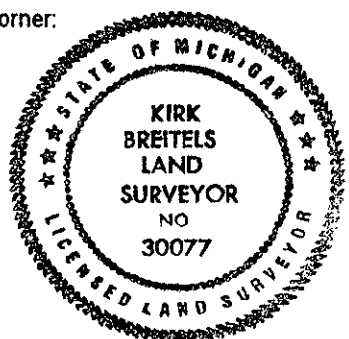
K-6 Found Kent County Monument (Harrison) per witnesses from above LCRC as set by Thomas C. Starr in place of the Stone with "X" on top that he found. Said Stone checks with Kent Co. Wits. and LCRC #1368.

| LCRC #3018 | LCRC #7045 |
|-----------------------------------|---|
| Nail & Remon. tag 8" Oak | North 5.93' Nail & Remon. tag 10" Oak |
| Nail & Remon. tag group 8" Maples | N25°E 15.57' Nail & Remon. tag group 8" Maples |
| Nail & Remon. tag 8" Oak | East 31.10' Nail & Remon. tag 10" Oak |
| Nail & Remon. tag 8" Oak | S35°E 28.98' Nail & Remon. tag 14" Oak |
| Nail & Remon. tag 10" Oak | South 85.74' Face of red buried CP Co. cable marker |
| Nail & Remon. tag 10" Oak | S60°W 30.33' NW cor. (wood siding) garage |

The selected location is accepted by me and is generally accepted by professional surveyors as the best available evidence of the position of the original corner.

C. Description of monument for corner and accessories established to perpetuate locating the position of the corner:

| | |
|--|--------------|
| K-6 Standard Kent County Monument | |
| Nail & KC Remon. tag E. side 10" Oak | N00°E 5.96' |
| Nail & KC Remon. tag E. side group 6"-12" Maples | N25°E 15.59' |
| Nail & KC Remon. tag W. side 10" Oak | S35°E 29.13' |
| Nail & KC Remon. tag SE side 14" Oak | S60°W 30.30' |
| Face of red CP Co. buried cable marker | S45°W 63.73' |
| NW corner (wood siding-under eve) garage | N80°E 68.49' |



Signed by Kirk Breitels
Surveyor's Michigan License No. 30077

Date 2/19/98