

MAR 08 1999

KENT COUNTY REMONUMENTATION

LAND CORNER RECORDATION CERTIFICATE
Filing Requirement of Act 74, Mich. P.A. 1970

STATE OF MICHIGAN
COUNTY OF KENT
RECEIVED FOR RECORD
98 MAR -5 AM 8:34

REG. OF DEEDS

10565

Register of Deeds Stamp & File Number

For corners in

KENT COUNTY
(County)

Located In: Corner Code #

- 1. Public Land Survey T 9N R 11W K-8
- T R
- T R
- T R
- 2. Property Controlling S T R
- in Section S T R
- 3. Miscellaneous S T R
- Property in Sec. S T R

- 4. Lot No. _____, Recorded Plat _____
- 5. Private Claims _____

I, Kirk Breitels, in a field survey on Jan. 9, 1998 do hereby state that under requirements of P.A. 74, Michigan P.A. of 1970, the corner points mentioned in lines 1 and 2 above were in conformance with regulations and rules therefore as required in the current manual of survey instructions of the United States Department of the Interior, Bureau of Land Management or by a decree of a Court of Law and /or that the corner points mentioned in lines 3, 4 and 5 above were in conformance with the rules of the Michigan Board of Land Surveyors or by a Decree of a Court of Law, established, re-established, monumented, recovered, found as expressed below.

NOTE: Not more than 2 corners, all in the same town and range, may be recorded on this certificate.

A	B	C	D	E	F	G	H	I	J	K	L	M
1												
2	6	5	4	3	2	1						
3												
4	7	8	9	10	11	12						
5												
6	18	17	16	15	14	13						
7												
8	19	20	21	22	23	24						
9												
10	30	29	28	27	26	25						
11												
12	31	32	33	34	35	36						
13												

A. Description of original monument and accessories and/or subsequent restoration:

- K-8 1837 GLO Whitcomb Set Post
- 1964 Kent Co. Wits 3/4" Iron
- 1975 LCRC #884 Nederveld 3/4" Round Iron
- 1979 LCRC #1290 Hackbardt 3/4" Iron
- 1981 LCRC #2554 Bueche Set Kent County Monument
- 1994 LCRC #7047 Byl Reset Kent County Monument

P.A. 345 1993 KENT COUNTY

PEER APPROVED 2/19/98

CHAIRMAN Harry Bueche

The position of this corner was previously approved by the Kent County Remonumentation Peer Group, monumented by John C. Bueche on 12-21-81 and was recorded per LCRC #2554.

B. Description of corner evidence found and/or method applied in restoring or reestablishing corner:

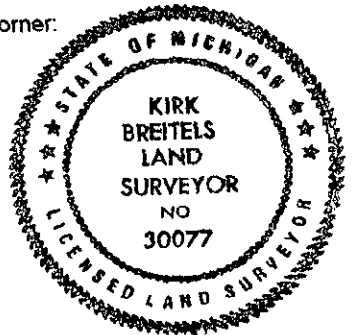
K-8 Found Kent County Monument (Harrison) per witnesses from above LCRC as set by William R. Byl at the same location as set in 1981 by John C. Bueche in place of the 1 1/4" Iron he found. Said Iron checks with Kent Co. Wits. and LCRC's #884 & #1290.

LCRC #2554	LCRC #7047
Nail & Remon. tag 12" Tri. Oak N00°E 53.17'	Nail & Remon. tag 15" Tri. Oak N00°E 53.17'
Nail & Remon. tag 24" Willow N60°W 104.56'	Nail & Remon. tag 15" Pine S65°W 58.45'
Nail & Remon. tag 12" Pine S65°W 59.06'	Nail & Remon. tag 15" Oak S15°W 33.60'
Nail & Remon. tag 12" Oak S15°W 33.62'	Nail & Remon. tag 36" Oak S00°E 25.18'
SE corner house foundation N30°W 116.55'	SE cor. house foundation N30°W 116.55'

The selected location is accepted by me and is generally accepted by professional surveyors as the best available evidence of the position of the original corner.

C. Description of monument for corner and accessories established to perpetuate locating the position of the corner:

- K-8 Standard Kent County Monument
- Nail & KC Remon. tag W. side 15" Tri. Oak N00°E 53.17'
- Nail & KC Remon. tag E. side 15" Oak S15°W 33.60'
- Nail & KC Remon. tag W. side 36" Oak S00°E 25.18'
- Nail & KC Remon. tag N. side 6" Pine S65°W 63.86'
- Concrete Monument S60°E 78.59'
- SE corner house foundation N30°W 116.55'



Signed by Kurt Byl
Surveyor's Michigan License No. 30077

Date 2/19/98