

CERTIFICATE & REMONUMENTATION

MAR 08 1999

KENT COUNTY REMONUMENTATION

LAND CORNER RECORDATION CERTIFICATE
Filing Requirement of Act 74, Mich. P.A. 1970

\$7.00
\$2.00

SECTION

For corners in

KENT COUNTY

(County)

Located In:

Corner Code #

- 1. Public Land Survey T 9N R 11W L-11
- T R
- T R
- T R
- 2. Property Controlling S T R
- in Section S T R
- 3. Miscellaneous S T R
- Property in Sec. S T R

- 4. Lot No. _____, Recorded Plat _____
- 5. Private Claims _____

I, Kirk Breitels, in a field survey on Jan. 14, 1998 do hereby state that under requirements of P.A. 74, Michigan P.A. of 1970, the corner points mentioned in lines 1 and 2 above were in conformance with regulations and rules therefore as required in the current manual of survey instructions of the United States Department of the Interior, Bureau of Land Management or by a decree of a Court of Law and /or that the corner points mentioned in lines 3, 4 and 5 above were in conformance with the rules of the Michigan Board of Land Surveyors or by a Decree of a Court of Law; established, re-established, monumented, recovered, found as expressed below:

NOTE: Not more than 2 corners, all in the same town and range, may be recorded on this certificate.

A. Description of original monument and accessories and/or subsequent restoration:

- L-11 1837 GLO Whitcomb Set Post
- 1973 LCRC #382 Spicer Set "T" Iron
- 1981 LCRC #2560 Bueche Set Kent County Monument
- 1994 LCRC #7057 Byl Kent County Monument

P.A. 345 1990 KENT COUNTY
PEER APPROVED 2/19/98
CHAIRMAN [Signature]

The position of this corner was previously approved by the Kent County Remonumentation Peer Group, monumented by John C. Bueche on 12-21-81 and was recorded per LCRC #2560.

B. Description of corner evidence found and/or method applied in restoring or reestablishing corner:

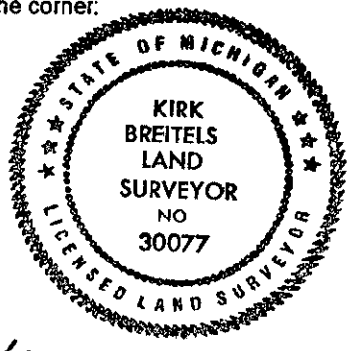
L-11 Found Kent County Monument (Harrison) per witnesses from above LCRC as set by John C. Bueche in place of the "T" Iron he found. Said "T" Iron checks with LCRC #382.

- | | | | |
|------------|---|------------|---|
| LCRC #2560 | Nail & Remon. tag 20" Elm S00°E 56.55' | LCRC #7057 | Nail & Remon. tag 24" Elm S00°E 56.55' |
| | Nail & Remon. tag 24" Oak N85°E 67.45' | | Nail & Remon. tag 30" Oak N85°E 67.45' |
| | Nail & Remon. tag 10" Cherry N20°E 10.85' | | Nail & Remon. tag 12" Cherry N20°E 10.67' |
| | Nail & Remon. tag 12" Cherry North 22.0' | | Nail & Remon. tag 15" Cherry N00°E 21.93' |
| | On fence line E-W and on tree row N. | | Nail & Remon. tag 36" Oak S90°W 48.37' |

The selected location is accepted by me and is generally accepted by professional surveyors as the best available evidence of the position of the original corner.

C. Description of monument for corner and accessories established to perpetuate locating the position of the corner:

- L-11 Standard Kent County Monument
- Nail & KC Remon. tag W. side dead 24" Elm S00°E 56.50'
- Nail & KC Remon. tag N. side 30" Oak N85°E 67.45'
- Nail & KC Remon. tag W. side 14" Cherry N20°E 10.70'
- Nail & KC Remon. tag E. side 18" Cherry N00°E 21.93'
- Nail & KC Remon. tag S. side 36" Oak S90°W 48.33'



Signed by [Signature]
Surveyor's Michigan License No. 30077

Date 2/19/98

STATE OF MICHIGAN
COUNTY OF KENT
RECEIVED FOR RECORD

98 MAR -5 AM 8:35

REG. OF DEEDS

[Signature]

10575
Register of Deeds Stamp & File Number

A	B	C	D	E	F	G	H	I	J	K	L	M
1												
2	6	5	4	3	2	1						
3												
4	7	8	9	10	11	12						
5												
6	18	17	16	15	14	13						
7												
8	19	20	21	22	23	24						
9												
10	30	29	28	27	26	25						
11												
12	31	32	33	34	35	36						
13												