

MAR 08 1999

KENT COUNTY REMONUMENTATION

\$7.00 SECTION \$2.00

LAND CORNER RECORDATION CERTIFICATE Filing Requirement of Act 74, Mich. P.A. 1970

For corners in KENT COUNTY (County)

Table with columns: Located In, Corner Code #. Includes entries for Public Land Survey (T 9N R 11W, M-3) and Property Controlling in Section (S, T, R).

STATE OF MICHIGAN COUNTY OF KENT RECEIVED FOR RECORD 98 MAR -5 AM 8:35 REG. OF DEEDS 10578 Register of Deeds Stamp & File Number

4. Lot No. , Recorded Plat 5. Private Claims

I, Kirk Breitels, in a field survey on Jan. 23, 19 98 do hereby state that under requirements of P.A. 74, Michigan P.A. of 1970, the corner points mentioned in lines 1 and 2 above were in conformance with regulations and rules therefore as required in the current manual of survey instructions of the United States Department of the Interior, Bureau of Land Management or by a decree of a Court of Law and/or that the corner points mentioned in lines 3, 4 and 5 above were in conformance with the rules of the Michigan Board of Land Surveyors or by a Decree of a Court of Law; established, re-established, monumented, recovered, found as expressed below:

NOTE: Not more than 2 corners, all in the same town and range, may be recorded on this certificate.

Grid table with columns A-M and rows 1-13. A dot is marked in row 3, column M.

A. Description of original monument and accessories and/or subsequent restoration:

Table listing monument details: M-3 1837 GLO Brookfield Set Post, 1959 Kent Co. Wits Leaded Stone, 1978 LCRC #1135 VanKooten PK Nail, 1982 LCRC #2813 Jonker Set Kent County Monument, 1994 LCRC #7060 Byl Kent County Monument

P.A. 345 1990 KENT COUNTY PEER APPROVED 2/19/98 CHAIRMAN Harry Huber

The position of this corner was previously approved by the Kent County Remonumentation Peer Group, monumented by Robert J. Jonker on 3-31-82 and was recorded per LCRC #2813.

B. Description of corner evidence found and/or method applied in restoring or reestablishing corner:

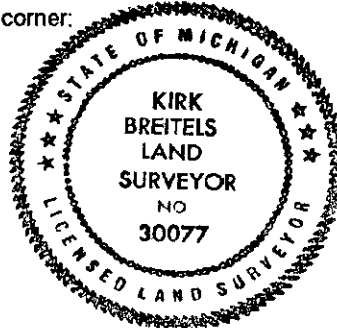
M-3 Found Kent County Monument (Harrison) per witnesses from above LCRC as set by Robet J. Jonker in place of the PK Nail he found. Said PK Nail checks with Kent Co. Wits. and LCRC #1135.

Table comparing LCRC #2813 and LCRC #7060 evidence: Nail & Remon. tag Fence Post, Nail & Remon. tag Hickory, Face Util. Ped., Chiseled "X" N. end culvert, Chiseled "X" S. end culvert, SE corner E. leg billboard.

The selected location is accepted by me and is generally accepted by professional surveyors as the best available evidence of the position of the original corner.

C. Description of monument for corner and accessories established to perpetuate locating the position of the corner:

Table listing monument details for M-3 Standard Kent County Monument: Nail & KC Remon. tag NW side Fence Post, Nail & KC Remon. tag SW side 16" Hickory, SE corner I-Beam leg (E. leg) of billboard, Face of Utility Box (at grade), Nail & KC Remon. tag top of conc. curb, Nail & KC Remon. tag top of conc. curb, Nail & KC Remon. tag S. side P. Pole, "T" Iron - West 33.84', C/L "X" of payment is 2.5' ± East



Signed by Kirk Breitels Surveyor's Michigan License No. 30077

Date 2/19/98