

*Seg. 2*

**MAY 22 2000**

**KENT COUNTY REMONUMENTATION**

**LAND CORNER RECORDATION CERTIFICATE**  
Filing Requirement of Act 74, Mich. P.A. 1970

**SECTION**

For corners in

<u>KENT COUNTY</u> (County)	Located In:	Corner Code #
		Algoma Twp.
1. Public Land Survey	T <u>9N</u> R <u>11W</u>	<u>B-10</u>
	T ___ R ___	___
	T ___ R ___	___
	T ___ R ___	___
2. Property Controlling in Section	S ___ T ___ R ___	___
	S ___ T ___ R ___	___
3. Miscellaneous Property in Sec.	S ___ T ___ R ___	___
	S ___ T ___ R ___	___

REC. OF DEEDS

1999 DEC 30 AM 9:20

REGISTER OF DEEDS  
COUNTY OF KENT  
RECEIVED FOR RECORD

**11679**

Register of Deeds Stamp & File Number

4. Lot No. \_\_\_\_\_, Recorded Plat \_\_\_\_\_  
5. Private Claims \_\_\_\_\_

I, Kirk Breitels, in a field survey on Dec. 13, 19 99 do hereby state that under requirements of P.A. 74, Michigan P.A. of 1970, the corner points mentioned in lines 1 and 2 above were in conformance with regulations and rules therefore as required in the current manual of survey instructions of the United States Department of the Interior, Bureau of Land Management or by a decree of a Court of Law and /or that the corner points mentioned in lines 3, 4 and 5 above were in conformance with the rules of the Michigan Board of Land Surveyors or by a Decree of a Court of Law; established, re-established, monumented, recovered, found as expressed below:

	A	B	C	D	E	F	G	H	I	J	K	L	M
1													
2		6	5	4	3	2	1						
3													
4		7	8	9	10	11	12						
5													
6		18	17	16	15	14	13						
7													
8		19	20	21	22	23	24						
9													
10		30	29	28	27	26	25						
11													
12		31	32	33	34	35	36						
13													

NOTE: Not more than 2 corners, all in the same town and range, may be recorded on this certificate.

A. Description of original monument and accessories and/or subsequent restoration:

- B-10 Kent County Monument, LCRC #10680
  - NW corner house foundation S35°E 64.60'
  - Nail & KC Remon. tag E. side CP Pole S37°W 35.58'
  - Nail & KC Remon. tag S. side 40" Maple N60°W 118.90'
  - Nail & KC Remon. tag N. side stump P. Pole S85°W 132.00'

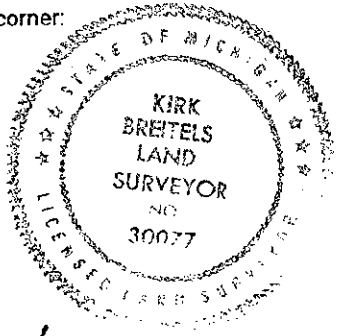
P.A. 345 1990 KENT COUNTY  
PEER APPROVED 8/20/98  
CHAIRMAN Harry Kuber

B. Description of corner evidence found and/or method applied in restoring or reestablishing corner:

B-10 Found Kent County Monument  
All witnesses above OK

C. Description of monument for corner and accessories established to perpetuate locating the position of the corner:

- B-10 RESET Standard Kent County Monument in MON. BOX
  - NW corner house foundation S35°E 64.60'
  - Nail & KC Remon. tag E. side CP Pole S37°W 35.58'
  - Nail & KC Remon. tag S. side 40" Maple N60°W 118.90'
  - Nail & KC Remon. tag N. side stump P. Pole S85°W 132.00'



Signed by Kirk Breitels  
Surveyor's Michigan License No. 30077

Date 12/28/99