

SURVEY & REMONUMENTATION

\$7.00
\$2.00

MAR 08 1999

KENT COUNTY REMONUMENTATION

LAND CORNER RECORDATION CERTIFICATE
Filing Requirement of Act 74, Mich. P.A. 1970

For corners in **SECTION**
KENT COUNTY
(County)

Located in: Corner Code #

1. Public Land Survey	T 9N R 12W	A-1
	T R	Common with
	T 10N R 12W	A-13
	T R	
2. Property Controlling in Section	S T R	
	S T R	
3. Miscellaneous Property in Sec.	S T R	
	S T R	

STATE OF MICHIGAN
COUNTY OF KENT
RECEIVED FOR RECORD
98 MAR -5 AM 8:27
REG. OF DEEDS
Jan. 9 1998

10421

Register of Deeds Stamp & File Number

4. Lot No. _____, Recorded Plat _____
5. Private Claims _____

I, Kirk Breitels, in a field survey on Jan. 20, 19 98 do hereby state that under requirements of P.A. 74, Michigan P.A. of 1970, the corner points mentioned in lines 1 and 2 above were in conformance with regulations and rules therefore as required in the current manual of survey instructions of the United States Department of the Interior, Bureau of Land Management or by a decree of a Court of Law and /or that the corner points mentioned in lines 3, 4 and 5 above were in conformance with the rules of the Michigan Board of Land Surveyors or by a Decree of a Court of Law; established, re-established, monumented, recovered, found as expressed below:

NOTE: Not more than 2 corners, all in the same town and range, may be recorded on this certificate.

A	B	C	D	E	F	G	H	I	J	K	L	M
1												
2	6	5	4	3	2	1						
3												
4	7	8	9	10	11	12						
5												
6	18	17	16	15	14	13						
7												
8	19	20	21	22	23	24						
9												
10	30	29	28	27	26	25						
11												
12	31	32	33	34	35	36						
13												

A. Description of original monument and accessories and/or subsequent restoration:

A-1	1837	GLO	Brookfield	Set Post
	1959	Kent Co. Wits		1" Iron
	1977	LCRC #1115	Nederveld	3/4" Iron
	1980	LCRC #1503	Merdzinski	Set Kent County Monument
	1994	LCRC #7571	J. Glaza	Kent County Monument

P.A. 345 1900 KENT COUNTY
PEER APPROVED 2/19/98
CHAIRMAN Harry Stahse

The position of this corner was previously approved by the Kent County Remonumentation Peer Group, monumented by John A. Merdzinski on 12-9-80 and was recorded per LCRC #1503.

B. Description of corner evidence found and/or method applied in restoring or reestablishing corner:

A-1 Found Kent County Monument (Harrison) per witnesses from above LCRC as set by John A. Merdzinski in place of the 3/4" Iron in a 2" Iron over a 3/4" Iron he found. All Irons check with Kent Co. Wits. and LCRC #1115.

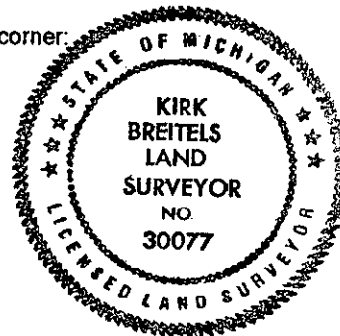
LCRC #1503	LCRC #7571
SE cor. headwall	SE corner headwall
N60°W 57.41'	N60°W 57.48'
NE cor. headwall	NE corner headwall
S80°W 51.92'	S80°W 51.92'
C/L 4" Willow	Nail & Remon. tag 10" Box Elder
S20°W 105.78'	N35°E 106.33'
SE cor. porch (#34) fnd.	C/L MB phone pad
S65°W 230.69'	S75°E 109.95'
SW cor. conc base MBT Box	1' S. of bit. rd. E. and 8' W. of bit. rd. N-S
S70°E 73.82'	7' S. of bit. rd. W.
SW cor. house (#13232) fnd.	
N35°E 229.12'	

The selected location is accepted by me and is generally accepted by professional surveyors as the best available evidence of the position of the original corner.

C. Description of monument for corner and accessories established to perpetuate locating the position of the corner:

A-1 Standard Kent County Monument

SE corner of headwall	N60°W 57.48'
NE corner of headwall	S80°W 51.92'
Nail & KC Remon. tag E. side 12" Box Elder	N35°E 106.24'
C/L top of Tele. Box	S75°E 109.95'
1' S. of bit. rd. to E.	
8' W. of bit. rd. N-S	
7' S. of bit. rd. E.	



Signed by Kirk Breitels
Surveyor's Michigan License No. 30077

Date 2/19/98