

**SURVEY & REMONUMENTATION**

\$7.00  
\$2.00

MAR 08 1999

KENT COUNTY REMONUMENTATION

SECTION

**LAND CORNER RECORDATION CERTIFICATE**  
Filing Requirement of Act 74, Mich. P.A. 1970

For corners in

KENT COUNTY  
(County)

Located In:

Corner Code #

- |                                    |  |            |
|------------------------------------|--|------------|
| 1. Public Land Survey              | T <u>9</u> N R <u>12</u> W             | <u>A-7</u> |
|                                    | T <u>   </u> R <u>   </u>              | <u>   </u> |
|                                    | T <u>   </u> R <u>   </u>              | <u>   </u> |
|                                    | T <u>   </u> R <u>   </u>              | <u>   </u> |
| 2. Property Controlling in Section | S <u>   </u> T <u>   </u> R <u>   </u> | <u>   </u> |
|                                    | S <u>   </u> T <u>   </u> R <u>   </u> | <u>   </u> |
| 3. Miscellaneous Property in Sec.  | S <u>   </u> T <u>   </u> R <u>   </u> | <u>   </u> |
|                                    | S <u>   </u> T <u>   </u> R <u>   </u> | <u>   </u> |

REG. OF DEEDS

*Handwritten signature*

98 MAR -5 AM 8:28

STATE OF MICHIGAN  
COUNTY OF KENT  
RECEIVED FOR RECORD

10425

Register of Deeds Stamp & File Number

4. Lot No. \_\_\_\_\_, Recorded Plat \_\_\_\_\_  
5. Private Claims \_\_\_\_\_

I, Kirk Breitels, in a field survey on Jan. 26, 19 98 do hereby state that under requirements of P.A. 74, Michigan P.A. of 1970, the corner points mentioned in lines 1 and 2 above were in conformance with regulations and rules therefore as required in the current manual of survey instructions of the United States Department of the Interior, Bureau of Land Management or by a decree of a Court of Law and /or that the corner points mentioned in lines 3, 4 and 5 above were in conformance with the rules of the Michigan Board of Land Surveyors or by a Decree of a Court of Law; established, re-established, monumented, recovered, found as expressed below:

NOTE: Not more than 2 corners, all in the same town and range, may be recorded on this certificate.

	A	B	C	D	E	F	G	H	I	J	K	L	M
1													
2	6		5		4		3		2		1		
3													
4	7		8		9		10		11		12		
5													
6	18		17		16		15		14		13		
7													
8	19		20		21		22		23		24		
9													
10	30		29		28		27		26		25		
11													
12	31		32		33		34		35		36		
13													

A. Description of original monument and accessories and/or subsequent restoration:

- |     |      |               |            |                                      |
|-----|------|---------------|------------|--------------------------------------|
| A-7 | 1837 | GLO           | Brookfield | Set Post                             |
|     | 1944 | Kent Co. Wits |            | Iron                                 |
|     | 1983 | LCRC #3354    | Glaza      | No desc. of corner - witnesses given |
|     | 1983 | LCRC #3617    | Bueche     | Set Kent County Monument in Mon. Box |
|     | 1991 | LCRC #6121    | Byl        | Kent County Monument in Mon. Box     |

P.A. 345 1990 KENT COUNTY

PEER APPROVED 2/19/98

CHAIRMAN Harry Fisher

The position of this corner was previously approved by the Kent County Remonumentation Peer Group, monumented by John C. Bueche on 10-28-83 and was recorded per LCRC #3617.

B. Description of corner evidence found and/or method applied in restoring or reestablishing corner:

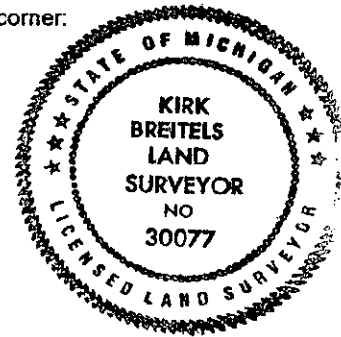
A-7 Found Kent County Monument (Harrison) per witnesses from above LCRC as set by John C. Bueche in place of the 1" Iron he found inside a Mon. box. Said Iron checks with Kent Co. Wits. and LCRC #3354.

LCRC #3617		LCRC #6121
Nail & Remon. tag P. Pole	N30°E 56.30'	Nail & Remon. tag P. Pole N30°E 56.36'
Nail & Remon. tag 12" Poplar	N75°W 129.97'	Nail & Remon. tag 20" Poplar N75°W 130.13'
Nail & Remon. tag P. Pole	N25°E 103.73'	Nail & Remon. tag P. Pole N25°E 103.76'
SE corner of house (brick)	N36°W 144.18'	SE corner of house (brick) N36°W 144.18'
NW corner of house (block fnd.)	S35°E 70.60'	NW corner of house (block fnd.) S35°E 70.62'
Top center of conc. ROW marker	S55°E 51.43'	Top center of conc. ROW marker S55°E 51.43'

The selected location is accepted by me and is generally accepted by professional surveyors as the best available evidence of the position of the original corner.

C. Description of monument for corner and accessories established to perpetuate locating the position of the corner:

- A-7 Standard Kent County Monument in Mon. Box
- |   |               |
|---|---------------|
| Nail & KC Remon. tag W. side P. Pole          | N30°E 56.36'  |
| Nail & KC Remon. tag S. side 24" Poplar       | N75°W 129.92' |
| Nail & KC Remon. tag W. side P. Pole          | N25°E 103.76' |
| NW of corner house (block fnd.)               | S35°E 70.62'  |
| Nail & KC Remon. tag SW side P. Pole          | S55°E 54.15'  |
| Nail & KC Remon. tag SW corner wood sign post | N35°W 60.44'  |



Signed by Kirk Breitels  
Surveyor's Michigan License No. 30077

Date 2/19/98