

MAR 08 1999

KENT COUNTY REMONUMENTATION

SECTION

LAND CORNER RECORDATION CERTIFICATE
Filing Requirement of Act 74, Mich. P.A. 1970

\$7.00
\$2.00

For corners in

KENT COUNTY

(County)

Located In:

Corner Code #

1. Public Land Survey

T	2N	R	12W	A-12
T		R		
T		R		
T		R		
S		T	R	
S		T	R	
S		T	R	
S		T	R	

2. Property Controlling in Section

3. Miscellaneous Property in Sec.

4. Lot No. _____, Recorded Plat _____
5. Private Claims _____

I, Kirk Breitels, in a field survey on Jan. 12, 19 98 do hereby state that under requirements of P.A. 74, Michigan P.A. of 1970, the corner points mentioned in lines 1 and 2 above were in conformance with regulations and rules therefore as required in the current manual of survey instructions of the United States Department of the Interior, Bureau of Land Management or by a decree of a Court of Law and /or that the corner points mentioned in lines 3, 4 and 5 above were in conformance with the rules of the Michigan Board of Land Surveyors or by a Decree of a Court of Law; established, re-established, monumented, recovered, found as expressed below:

NOTE: Not more than 2 corners, all in the same town and range, may be recorded on this certificate.

A. Description of original monument and accessories and/or subsequent restoration:

A-12	1837	GLO	Brookfield	Set Post
		Kent Co. Wits		1" Iron
	1955	Williams & Works		Solid Iron
	1967	Consumers Power		1" Solid Iron
	1985	LCRC #4215	Kolehouse	Set Kent County Monument
	1991	LCRC #6126	Byl	Kent County Monument in Mon. Box

P.A. 345 1990 KENT COUNTY

PEER APPROVED 2/19/98

CHAIRMAN Randy Kolehouse

The position of this corner was previously approved by the Kent County Remonumentation Peer Group, monumented by Randy J. Kolehouse on 4-30-85 and was recorded per LCRC #4215.

B. Description of corner evidence found and/or method applied in restoring or reestablishing corner:

A-12 Found Kent County Monument (Harrison) in Mon. Box per witnesses from above LCRC as set by Randy J. Kolehouse in place of the 1" Solid Iron he found over a ring of Stones. Said Iron checks with Kent Co. Wits., Williams & Works and Consumers Power.

LCRC #42154

Nail & Remon. tag 12" Apple	N75°E	89.38'
Nail & Remon. tag 12" Apple	N30°E	58.70'
Nail & Remon. tag 24" Maple	S15°W	169.6'
C/L 6" Apple	N45°W	71.65'
C/L 4" Apple	S55°W	57.80'

LCRC #6126

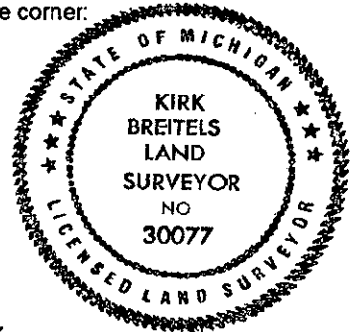
Nail & Remon. tag 24" Maple	S15°W	169.47'
Nail & Remon. tag 8" Apple	N45°W	71.67'
Nail & Remon. tag 6" Apple	S55°W	57.97'
Nail & Remon. tag 8" Apple	N75°W	51.30'

The selected location is accepted by me and is generally accepted by professional surveyors as the best available evidence of the position of the original corner.

C. Description of monument for corner and accessories established to perpetuate locating the position of the corner:

A-12 Standard Kent County Monument in Mon. Box

Nail & KC Remon. tag E. side 27" Maple	S15°W	169.47'
Nail & KC Remon. tag NE side 10" Apple	N45°W	71.67'
Nail & KC Remon. tag N. side 8" Apple	S55°W	57.94'
Nail & KC Remon. tag N. side 10" Apple	N75°W	51.30'



Signed by Kirk Breitels

Date 2/19/98

Surveyor's Michigan License No. 30077

STATE OF MICHIGAN
COUNTY OF KENT
RECEIVED FOR RECORD
98 MAR -5 AM 8:28
REG. OF DEEDS
[Signature]

10430

Register of Deeds Stamp & File Number

	A	B	C	D	E	F	G	H	I	J	K	L	M
1													
2	6		5		4		3		2		1		
3													
4	7		8		9		10		11		12		
5													
6	18		17		16		15		14		13		
7													
8	19		20		21		22		23		24		
9													
10	30		29		28		27		26		25		
11													
12	31		32		33		34		35		36		
13													