

MAR 08 1999

SECTION

KENT COUNTY REMONUMENTATION

LAND CORNER RECORDATION CERTIFICATE
Filing Requirement of Act 74, Mich. P.A. 1970

For corners in

KENT COUNTY

(County)

Located in:

Corner Code #

- 1. Public Land Survey T9N R12W B-10
 T R
 T R
 T R
- 2. Property Controlling S T R
 in Section S T R
- 3. Miscellaneous S T R
 Property in Sec. S T R

- 4. Lot No. _____, Recorded Plat _____
- 5. Private Claims _____

I, Kirk Breitels, in a field survey on July 2, 1998 do hereby state that under requirements of P.A. 74, Michigan P.A. of 1970, the corner points mentioned in lines 1 and 2 above were in conformance with regulations and rules therefore as required in the current manual of survey instructions of the United States Department of the Interior, Bureau of Land Management or by a decree of a Court of Law and/or that the corner points mentioned in lines 3, 4 and 5 above were in conformance with the rules of the Michigan Board of Land Surveyors or by a Decree of a Court of Law; established, re-established, monumented, recovered, found as expressed below:

NOTE: Not more than 2 corners, all in the same town and range, may be recorded on this certificate.

A. Description of original monument and accessories and/or subsequent restoration:

- B-10 1837 GLO Not Set
- 1926 Williams & Works Used fence corner - On E-W 1/4 line - 4.2' E. of N-S 1/4 line
- Kent Co. Wits No information
- 1984 LCRC #3875 Bueche Set Rerod at intersection of 1/4 lines
- Iron & fence corner N45°E 8.0' 8" Ash N85°W 14.66'
- 24" Maple S30°W 20.16' 10" Maple N20°E 21.50'
- 24" Beech S15°E 23.40'

P.A. 345 1990 KENT COUNTY
 PEER APPROVED 7/23/98
 CHAIRMAN Gary Huber

B. Description of corner evidence found and/or method applied in restoring or reestablishing corner:

B-10 Found Capped Rerod (Bueche) per witnesses of LCRC #3875.

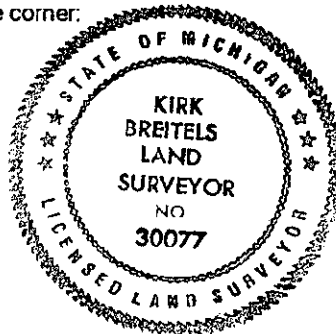
Said Iron is 0.6' S and 0.6' E. of intersection of 1/4 lines and agrees ± with measurements of Bueche survey.

The Capped Rerod (Bueche) is accepted by me and is generally accepted by professional surveyors as the best available evidence of the position of the corner.

C. Description of monument for corner and accessories established to perpetuate locating the position of the corner:

B-10 Set Standard Kent County Monument in place of the Capped Rerod (Bueche).

- Nail & KC Remon. tag W. side 30" Maple S30°W 19.77'
- Nail & KC Remon. tag W. side 28" Beech S15°E 23.40'
- Nail & KC Remon. tag S. side 10" Ash N85°W 14.66'
- Nail & KC Remon. tag S. side 27" Beech S85°E 55.58'
- Fence Corner for fences East and South is 5' North and 5' East



Signed by Kirk Breitels
 Surveyor's Michigan License No. 30077

Date 9/25/98

STATE OF MICHIGAN
 COUNTY OF KENT
 RECEIVED FOR RECORD

38 OCT -7 AM 10:15

REG. OF DEEDS

Luis J. Bond

10701

Register of Deeds Stamp & File Number

	A	B	C	D	E	F	G	H	I	J	K	L	M
2	6		5		4		3		2		1		
3													
4	7		8		9		10		11		12		
5													
6	18		17		16		15		14		13		
7													
8	19		20		21		22		23		24		
9													
10	30		29		28		27		26		25		
11													
12	31		32		33		34		35		36		
13	*												