

\$7.00
\$2.00

MAR 08 1999

KENT COUNTY REMONUMENTATION

STATE OF MICHIGAN
COUNTY OF KENT
RECEIVED FOR RECORD

98 JUL 14 AM 9:54

SECTION

LAND CORNER RECORDATION CERTIFICATE
Filing Requirement of Act 74, Mich. P.A. 1970

For corners in
KENT COUNTY

W. J. Bond
REG. OF DEEDS

Located In:	Corner Code #
1. Public Land Survey	T ^{9N} R ^{12W} C-1
	T R
	T R
	T R
	T R
2. Property Controlling in Section	S T R
	S T R
3. Miscellaneous Property in Sec.	S T R
	S T R

10654

Register of Deeds Stamp & File Number

4. Lot No. _____, Recorded Plat _____
5. Private Claims _____

A	B	C	D	E	F	G	H	I	J	K	L	M
1												
2	6	5	4	3	2	1						
3												
4	7	8	9	10	11	12						
5												
6	18	17	16	15	14	13						
7												
8	19	20	21	22	23	24						
9												
10	30	29	28	27	26	25						
11												
12	31	32	33	34	35	36						
13												

I, Kirk Breitels, in a field survey on May 5, 1998 do hereby state that under requirements of P.A. 74, Michigan P.A. of 1970, the corner points mentioned in lines 1 and 2 above were in conformance with regulations and rules therefore as required in the current manual of survey instructions of the United States Department of the Interior, Bureau of Land Management or by a decree of a Court of Law and/or that the corner points mentioned in lines 3, 4 and 5 above were in conformance with the rules of the Michigan Board of Land Surveyors or by a Decree of a Court of Law; established, re-established, monumented, recovered, found as expressed below:

NOTE: Not more than 2 corners, all in the same town and range, may be recorded on this certificate.

A. Description of original monument and accessories and/or subsequent restoration:

C-1	1837 GLO	Whitcomb	Set Post
	1941 Kent Co. Wits		Axle
	1974 LCRC #752	Spicer	Axle Shaft
	1992 LCRC #6601	Bueche	Set Kent County Monument
	1994 LCRC #7565	J. Glaza	Kent County Monument

P.A. 345 1990 KENT COUNTY
PEER APPROVED 6/25/98
CHAIRMAN Harry Huber

The position of this corner was previously approved by the Kent County Remonumentation Peer Group, monumented by John C. Bueche on 10-12-92 and was recorded per LCRC #6601.

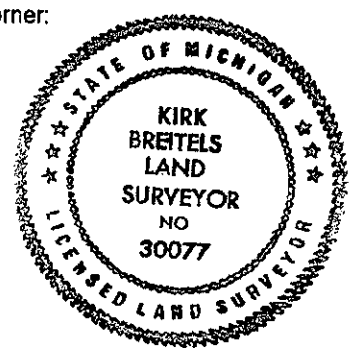
B. Description of corner evidence found and/or method applied in restoring or reestablishing corner:

C-1 Found Kent County Monument (Harrison) per witnesses from above LCRC as set on Twp. line by John C. Bueche in place of the 1" Iron he found inside a Mon. Box. Said Iron checks with LCRC #752. Kent Co. Wit. are gone.			
LCRC #6601	LCRC #7565		
Nail & Remon. tag T. Pole	N10°W 234.20'	Nail & Remon. tag T. Pole	N10°W 234.20'
Nail & Remon. tag T. Pole	S20°W 115.57'	Nail & Remon. tag T. Pole	S20°W 115.57'
Nail & Remon. tag T. Pole	N15°E 195.31'	Nail & Remon. tag T. Pole	N15°E 195.31'
Nail & Remon. tag 30" Locust	N40°E 98.51'	Nail & Remon. tag 36" Poplar	N40°E 98.53'
K.C. Mon. at NE cor. Sec. 31-10-12 East	15.33'	Kent Co. Mon. NE cor. Sec. 31-10-12 East	15.33'
C/L bit. N-S is E. 7', on C/L bit. W.			

The selected location is accepted by me and is generally accepted by professional surveyors as the best available evidence of the position of the original corner.

C. Description of monument for corner and accessories established to perpetuate locating the position of the corner:

C-1 Standard Kent County Monument	
Nail & KC Remon. tag W. side P. Pole	N10°W 234.16'
Nail & KC Remon. tag NW side P. Pole	S20°W 115.54'
Nail & KC Remon. tag W. side P. Pole	N15°E 195.31'
Nail & KC Remon. tag W. side 36" Poplar	N40°E 98.48'
Kent Co. Mon. (C-13, T10N, R12W)	East 15.36'
C/L N-S asph. road is East 7'	
On C/L asph. road West	



Signed by *Kirk Breitels*
Surveyor's Michigan License No. 30077

Date 6/25/98