

SURVEY & REMONUMENTATION

MAR 08 1999

KENT COUNTY REMONUMENTATION

SECTION - LAND CORNER RECORDATION CERTIFICATE
Filing Requirement of Act 74, Mich. P.A. 1970

For corners in

KENT COUNTY
(County)

Located In:

Corner Code #

1. Public Land Survey	T <u>9N</u> R <u>12W</u>	<u>C-12</u>
	T _____ R _____	_____
	T _____ R _____	_____
	T _____ R _____	_____
2. Property Controlling in Section	S _____ T _____ R _____	_____
	S _____ T _____ R _____	_____
3. Miscellaneous Property in Sec.	S _____ T _____ R _____	_____
	S _____ T _____ R _____	_____

STATE OF MICHIGAN
COUNTY OF KENT
RECEIVED FOR RECORD
98 MAR -5 AM 8:28
REG. OF DEEDS
Lucy Bond

10441

Register of Deeds Stamp & File Number

4. Lot No. _____, Recorded Plat _____
5. Private Claims _____

I, Kirk Breitels, in a field survey on Jan. 12, 19 98 do hereby state that under requirements of P.A. 74, Michigan P.A. of 1970, the corner points mentioned in lines 1 and 2 above were in conformance with regulations and rules therefore as required in the current manual of survey instructions of the United States Department of the Interior, Bureau of Land Management or by a decree of a Court of Law and /or that the corner points mentioned in lines 3, 4 and 5 above were in conformance with the rules of the Michigan Board of Land Surveyors or by a Decree of a Court of Law; established, re-established, monumented, recovered, found as expressed below:

NOTE: Not more than 2 corners, all in the same town and range, may be recorded on this certificate.

A	B	C	D	E	F	G	H	I	J	K	L	M
1												
2	6		5		4		3		2		1	
3												
4	7		8		9		10		11		12	
5												
6	18		17		16		15		14		13	
7												
8	19		20		21		22		23		24	
9												
10	30		29		28		27		26		25	
11												
12	31	●	32		33		34		35		36	
13												

A. Description of original monument and accessories and/or subsequent restoration:

C-12 1837 GLO	Whitcomb	Set Post
1944 Kent Co. Wits		Concrete Monument
1983 LCRC #3353	E. Glaza	Iron
1983 LCRC #3619	Bueche	Set Kent County Monument
1991 LCRC #6143	Byl	Kent County Monument

P.A. 345 1990 KENT COUNTY
PEER APPROVED 2/19/98
CHAIRMAN *Harry Huber*

The position of this corner was previously approved by the Kent County Remonumentation Peer Group, monumented by John C. Bueche on 10-28-83 and was recorded per LCRC #3619.

B. Description of corner evidence found and/or method applied in restoring or reestablishing corner:

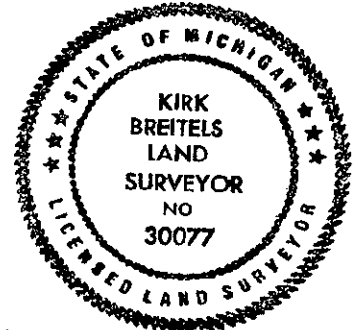
C-12 Found Kent County Monument (Harrison) per witnesses from above LCRC as set by John C. Bueche in place of the Concrete Monument he found. Said Concrete Monument checks with Kent Co. Wit. and LCRC #3353

LCRC #3619	LCRC #6143
Nail & Remon. tag 12" Apple S50°E 77.52'	Nail & Remon. tag 14" Apple S50°E 77.50'
Nail & Remon. tag 10" Apple S30°E 104.00'	Nail & Remon. tag 12" Apple S30°E 103.98'
Nail & Remon. tag 24" Apple S70°W 54.82'	Nail & Remon. tag P. Pole N40°E 146.68'
Nail & Remon. tag 24" Apple S40°W 80.05'	C/L 1" Apple Tree S65°W 50.75'
Nail in 20" Apple N65°W 56.17'	

The selected location is accepted by me and is generally accepted by professional surveyors as the best available evidence of the position of the original corner.

C. Description of monument for corner and accessories established to perpetuate locating the position of the corner:

C-12 Standard Kent County Monument	
Nail & KC Remon. tag SW side 16" Apple	S50°E 77.50'
Nail & KC Remon. tag S. side 14" Apple	S30°E 103.98'
Nail & KC Remon. tag (7' high) W. side P. Pole	N40°E 146.68'
C/L 4" Apple	S65°W 50.75'
C/L Fruitridge Ave. N-S is East 1' ±	



Signed by *Kirk Breitels*
Surveyor's Michigan License No. 30077

Date 2/19/98