

**SURVEY & REMONUMENTATION**

MAR 08 1999

~~\$7.00~~  
\$2.00

**KENT COUNTY REMONUMENTATION**

**SECTION**

**LAND CORNER RECORDATION CERTIFICATE**  
Filing Requirement of Act 74, Mich. P.A. 1970

For corners in

KENT COUNTY  
(County)

Located in:

Corner Code #

- |                                    |              |               |     |
|------------------------------------|--------------|---------------|-----|
| 1. Public Land Survey              | T <u>9</u> N | R <u>12</u> W | D-5 |
|                                    | T            | R             |     |
|                                    | T            | R             |     |
|                                    | T            | R             |     |
| 2. Property Controlling in Section | S            | T             | R   |
|                                    | S            | T             | R   |
| 3. Miscellaneous Property in Sec.  | S            | T             | R   |
|                                    | S            | T             | R   |

4. Lot No. \_\_\_\_\_, Recorded Plat \_\_\_\_\_  
5. Private Claims \_\_\_\_\_

I, Kirk Breitels, in a field survey on Jan. 22, 19 98 do hereby state that under requirements of P.A. 74, Michigan P.A. of 1970, the corner points mentioned in lines 1 and 2 above were in conformance with regulations and rules therefore as required in the current manual of survey instructions of the United States Department of the Interior, Bureau of Land Management or by a decree of a Court of Law and for that the corner points mentioned in lines 3, 4 and 5 above were in conformance with the rules of the Michigan Board of Land Surveyors or by a Decree of a Court of Law; established, re-established, monumented, recovered, found as expressed below:

**NOTE:** Not more than 2 corners, all in the same town and range, may be recorded on this certificate.

**A. Description of original monument and accessories and/or subsequent restoration:**

- |     |      |               |              |                          |
|-----|------|---------------|--------------|--------------------------|
| D-5 | 1837 | GLO           | Whitcomb     | Set Post                 |
|     | 1940 | Kent Co. Wits |              | Concrete Monument        |
|     | 1983 | LCRC #3669    | Chettleburgh | Set Kent County Monument |
|     | 1991 | LCRC #6146    | Byl          | Kent County Monument     |

P.A. 345 1990 KENT COUNTY  
PEER APPROVED 2/19/98  
CHAIRMAN Thomas M. Chettleburgh

The position of this corner was previously approved by the Kent County Remonumentation Peer Group, monumented by Thomas M. Chettleburgh on 12-21-83 and was recorded per LCRC #3669.

**B. Description of corner evidence found and/or method applied in restoring or reestablishing corner:**

- D-5 Found Kent County Monument (Harrison) per witnesses from above LCRC as set by Thomas M. Chettleburgh in place of the Capped Spike over a Conc. Monument he found. Both Spike and Conc. Monument check with Kent Co. Wits.
- |            |                             |              |            |                               |              |
|------------|-----------------------------|--------------|------------|-------------------------------|--------------|
| LCRC #3669 | Nail & Remon. tag 16" Ash   | N06°E 50.80' | LCRC #6146 | Nail & Remon. tag 16" Ash     | N06°E 50.83' |
|            | Nail & Remon. tag 9" Apple  | S12°E 63.58' |            | Nail & Remon. tag P. Pole     | S65°W 82.51' |
|            | Nail & Remon. tag 18" Apple | S18°W 61.33' |            | Nail & Remon. tag 29" Beech   | N42°W 64.12' |
|            | Nail & Remon. tag P. Pole   | S65°W 82.51' |            | Capped "T" Iron (W&W)         | N00°E 33.00' |
|            | Nail & Remon. tag 29" Beech | N42°W 64.06' |            | Chiseled "X" top E. end culv. | S45°E 28.71' |

The selected location is accepted by me and is generally accepted by professional surveyors as the best available evidence of the position of the original corner.

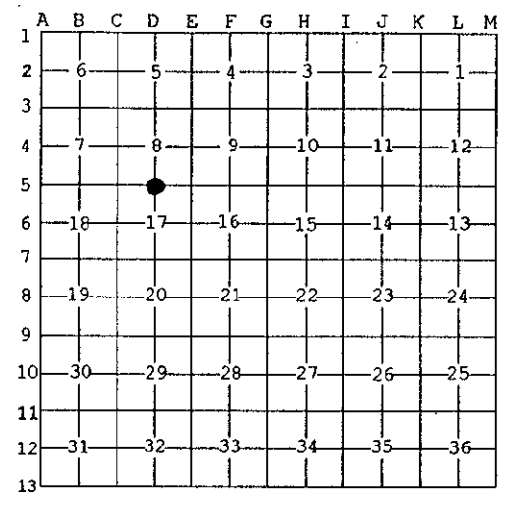
**C. Description of monument for corner and accessories established to perpetuate locating the position of the corner:**

- D-5 Standard Kent County Monument
- |  |              |
|--|--------------|
| Nail & KC Remon. tag E. side 18" Ash   | N06°E 50.83' |
| Nail & KC Remon. tag N. side P. Pole   | S65°W 82.51' |
| Nail & KC Remon. tag NE side 32" Beech | N42°W 64.12' |
| Capped "T" Iron (W&W)                  | N00°E 33.00' |
| Nail & KC Remon. tag SW side 6" Apple  | S45°E 58.35' |

STATE OF MICHIGAN  
COUNTY OF KENT  
RECEIVED FOR RECORD  
98 MAR -5 AM 8:28  
REG. OF DEEDS  
*Barry Stand*

10443

Register of Deeds Stamp & File Number



Signed by *Kirk Breitels*  
Surveyor's Michigan License No. 30077

Date 2/19/98

