

MAR 08 1999

KENT COUNTY REMONUMENTATION

LAND CORNER RECORDATION CERTIFICATE
Filing Requirement of Act 74, Mich. P.A. 1970

STATE OF MICHIGAN
COUNTY OF KENT
RECEIVED FOR RECORD
98 OCT -7 AM 10:15
REG. OF DEEDS
Lucy Stand

10710

Register of Deeds Stamp & File Number

For corners in

KENT COUNTY
(County)

Located In:	Corner Code #
T9N R12W	D-10
T___ R___	_____
T___ R___	_____
T___ R___	_____
S___ T___ R___	_____
S___ T___ R___	_____
S___ T___ R___	_____
S___ T___ R___	_____

1. Public Land Survey

2. Property Controlling in Section

3. Miscellaneous Property in Sec.

4. Lot No. _____, Recorded Plat _____
5. Private Claims _____

I, Kirk Breitels, in a field survey on July 27, 1998 do hereby state that under requirements of P.A. 74, Michigan P.A. of 1970, the corner points mentioned in lines 1 and 2 above were in conformance with regulations and rules therefore as required in the current manual of survey instructions of the United States Department of the Interior, Bureau of Land Management or by a decree of a Court of Law and /or that the corner points mentioned in lines 3, 4 and 5 above were in conformance with the rules of the Michigan Board of Land Surveyors or by a Decree of a Court of Law; established, re-established, monumented, recovered, found as expressed below:

NOTE: Not more than 2 corners, all in the same town and range, may be recorded on this certificate.

	A	B	C	D	E	F	G	H	I	J	K	L	M
1													
2	6			5		4		3		2		1	
3													
4	7			8		9		10		11		12	
5													
6	10			17		16		15		14		13	
7													
8	19			20		21		22		23		24	
9													
10	30			29		28		27		26		25	
11													
12	31			32		33		34		35		36	
13													

A. Description of original monument and accessories and/or subsequent restoration:

D-10 1837	GLO	Not Set
	Williams & Works	No information
	Kent Co. Wits	No information
1998	Survey Jonker	Computed Intersection of 1/4 lines.

P.A. 345 1990 KENT COUNTY
PEER APPROVED 8/20/98
CHAIRMAN *[Signature]*

B. Description of corner evidence found and/or method applied in restoring or reestablishing corner:
D-10 Established Intersection of 1/4 lines and found Large Stone with smaller stones at approximate location.

Location falls on approximate orchard trails North and West and East and field division to East also.

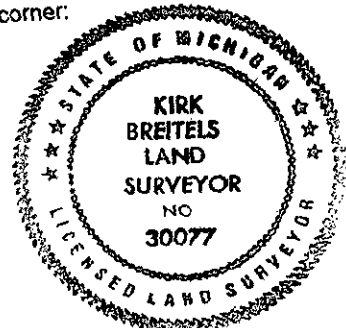
The Intersection of 1/4 lines is accepted by me and is generally accepted by professional surveyors as the best available evidence of the position of the corner.

C. Description of monument for corner and accessories established to perpetuate locating the position of the corner:

D-10 Set Standard Kent County Monument at Intersection of 1/4 lines.

Nail & KC Remon. tag SW side 12" Apple	S45°E 19.17'
Nail & KC Remon. tag NW side 8" Apple	S45°W 15.96'
Nail & KC Remon. tag N. side 12" Apple	S80°W 77.78'
Nail & KC Remon. tag N. side 12" Apple	N70°W 55.20'
Nail & KC Remon. tag E. side 12" Apple	N15°W 37.26'

Monument is 5" below grade



Signed by *[Signature]*
Surveyor's Michigan License No. 30077

Date 9/25/98