

\$7.00
\$2.00

MAR 08 1999

KENT COUNTY REMONUMENTATION

STATE OF MICHIGAN
COUNTY OF KENT
RECEIVED FOR RECORD

SECTION

LAND CORNER RECORDATION CERTIFICATE
Filing Requirement of Act 74, Mich. P.A. 1970

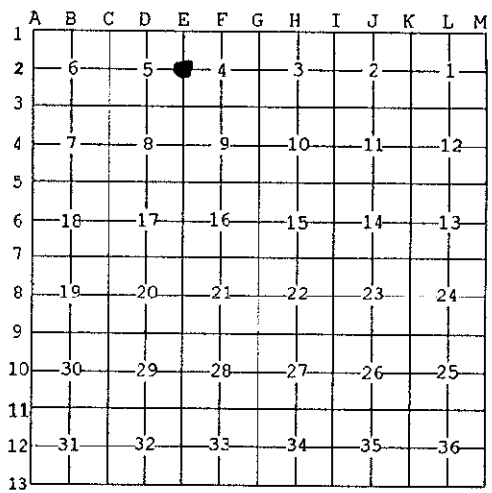
98 JUL 14 AM 9:57

For corners in
KENT COUNTY

(County)	Located In:	Corner Code #
1. Public Land Survey	T ^{9N} R ^{12W}	E-2
	T R	
	T R	
	T R	
	T R	
2. Property Controlling in Section	S T R	
	S T R	
3. Miscellaneous Property in Sec.	S T R	
	S T R	
4. Lot No. _____, Recorded Plat _____		
5. Private Claims _____		

W. J. Ford
REG. OF DEEDS

10655
Register of Deeds Stamp & File Number



I, Kirk Breitels, in a field survey on May 6, 1998 do hereby state that under requirements of P.A. 74, Michigan P.A. of 1970, the corner points mentioned in lines 1 and 2 above were in conformance with regulations and rules therefore as required in the current manual of survey instructions of the United States Department of the Interior, Bureau of Land Management or by a decree of a Court of Law and /or that the corner points mentioned in lines 3, 4 and 5 above were in conformance with the rules of the Michigan Board of Land Surveyors or by a Decree of a Court of Law; established, re-established, monumented, recovered, found as expressed below:

NOTE: Not more than 2 corners, all in the same town and range, may be recorded on this certificate.

A. Description of original monument and accessories and/or subsequent restoration:

E-2	1837	GLO	Whitcomb	Set Post
	1939	Kent Co. Wits		Concrete Monument
	1980	LCRC #1383	Jonker	1/2" Boat Spike
	1982	LCRC #2627	Nederveld	Set Kent County Monument
	1991	LCRC #6151	Byl	Kent County Monument

P.A. 345 1990 KENT COUNTY
PEER APPROVED 6/25/98
CHAIRMAN *Harry Hubert*

The position of this corner was previously approved by the Kent County Remonumentation Peer Group, monumented by Gordon D. Nederveld on 1-25-82 and was recorded per LCRC #2627.

B. Description of corner evidence found and/or method applied in restoring or reestablishing corner:

E-2	Found Kent County Monument (Harrison) per witnesses from above LCRC as set by Gordon D. Nederveld in place of the 1/2" Boat Spike over a Concrete Monument he found. Both check with Kent Co. Wit. and LCRC #1383.		
	LCRC #2627		
	LCRC #6151		
Nail & Remon. tag 18" Maple	S34°W 69.01'	Nail & Remon. tag 18" Maple	S34°W 69.01'
Nail & Remon. tag 18" Sassafras	N86°E 23.86'	Nail & Remon. tag 18" Sassafras	N86°E 23.92'
Nail & Remon. tag 12" Sassafras	S40°E 30.60'	Nail & Remon. tag 12" Sassafras	S40°E 30.64'
NE cor. hse. fndn.	S74°W 137.18'	NE cor. hse. fndn.	S74°W 137.23'
Nail & Remon. tag		Nail & Remon. tag 16" Walnut	N25°E 63.52'

The selected location is accepted by me and is generally accepted by professional surveyors as the best available evidence of the position of the original corner.

C. Description of monument for corner and accessories established to perpetuate locating the position of the corner:

E-2	Standard Kent County Monument
Nail & KC Remon. tag E. side 22" Maple	S34°W 69.01'
Nail & KC Remon. tag S. side 20" Sassafras	N86°E 23.83'
Nail & KC Remon. tag N. side 14" Sassafras	S40°E 30.60'
NE corner house foundation	S74°W 137.23'
Nail & KC Remon. tag W. side 18" Walnut	N25°E 63.52'



Signed by *Kirk Breitels*
Surveyor's Michigan License No. 30077

Date 6/25/98