

SURVEY & REMONUMENTATION

KENT COUNTY REMONUMENTATION

MAR 08 1999

LAND CORNER RECORDATION CERTIFICATE  
Filing Requirement of Act 74, Mich. P.A. 1970

STATE OF MICHIGAN  
COUNTY OF KENT  
RECEIVED FOR RECORD  
98 MAY 21 AM 8:32  
REG. OF DEEDS  
*W. J. Jones*

\$7.00  
\$2.00

SECTION

For corners in

KENT COUNTY  
(County)

Located In:

Corner Code #

- 1. Public Land Survey      T 9N R 12W      E-12
- T    R
- T    R
- T    R
- 2. Property Controlling    S    T    R
- in Section                S    T    R
- 3. Miscellaneous            S    T    R
- Property in Sec.         S    T    R

10622

Register of Deeds Stamp & File Number

- 4. Lot No. \_\_\_\_\_, Recorded Plat \_\_\_\_\_
- 5. Private Claims \_\_\_\_\_

I, Kirk Breitels, in a field survey on April 7, 19 98 do hereby state that under requirements of P.A. 74, Michigan P.A. of 1970, the corner points mentioned in lines 1 and 2 above were in conformance with regulations and rules therefore as required in the current manual of survey instructions of the United States Department of the Interior, Bureau of Land Management or by a decree of a Court of Law and /or that the corner points mentioned in lines 3, 4 and 5 above were in conformance with the rules of the Michigan Board of Land Surveyors or by a Decree of a Court of Law, established, re-established, monumented, recovered, found as expressed below:

NOTE: Not more than 2 corners, all in the same town and range, may be recorded on this certificate.

A	B	C	D	E	F	G	H	I	J	K	L	M
1												
2	6	5	4	3	2	1						
3												
4	7	8	9	10	11	12						
5												
6	18	17	16	15	14	13						
7												
8	19	20	21	22	23	24						
9												
10	30	29	28	27	26	25						
11												
12	31	32	33	34	35	36						
13												

A. Description of original monument and accessories and/or subsequent restoration:

- |      |      |                  |           |                                      |
|------|------|------------------|-----------|--------------------------------------|
| E-12 | 1837 | GLO              | Whitcomb  | Set Post                             |
|      | 1918 | Williams & Works |           | Stone                                |
|      | 1944 | Kent Co. Wits    |           | Stone                                |
|      | 1985 | LCRC #4214       | Kolehouse | Set Kent County Monument in Mon. Box |
|      | 1991 | LCRC #6161       | Byl       | Kent County Monument in Mon. Box     |

P.A. 345 1990 KENT COUNTY  
PEER APPROVED 4/30/98  
CHAIRMAN Randy J. Kolehouse

The position of this corner was previously approved by the Kent County Remonumentation Peer Group, monumented by Randy J. Kolehouse on 4-30-85 and was recorded per LCRC#4214.

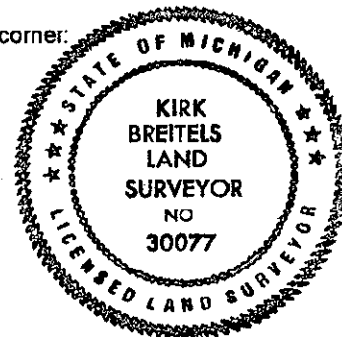
B. Description of corner evidence found and/or method applied in restoring or reestablishing corner:

- E-12 Found Kent County Monument (Harrison) per witnesses from above LCRC as set by Randy J. Kolehouse in place of the 1 1/2" Iron he found inside a Mon. Box. Said Iron checks with Williams & Works information and Kent Co. Wit.
- |  |  |
|--|--|
| LCRC #4214                               | LCRC #6161                               |
| Nail & Remon. tag 12" Apple S45°W 82.28' | Nail & Remon. tag 12" Apple S45°W 82.28' |
| Nail & Remon. tag 16" Apple N70°W 47.51' | SW corner house foundation S25°E 86.55'  |
| SW corner house foundation S25°E 86.55'  | NE corner porch foundation S65°E 74.54'  |
| NE corner porch foundation S65°E 74.54'  | Nail & Remon. tag P. Pole N30°W 135.25'  |

The selected location is accepted by me and is generally accepted by professional surveyors as the best available evidence of the position of the original corner.

C. Description of monument for corner and accessories established to perpetuate locating the position of the corner:

- E-12 Standard Kent County Monument in Mon. Box
- |  |               |
|--|---------------|
| Nail & KC Remon. tag NW side 15" Apple | S45°W 82.28'  |
| SW corner house foundation             | S25°E 86.55'  |
| NE corner porch foundation (enclosed)  | S65°E 74.54'  |
| Nail & KC Remon. tag W. side P. Pole   | N30°W 135.25' |
| Capped Rerod (Jonker)                  | N90°W 33.00'  |



Signed by Kirk Breitels  
Surveyor's Michigan License No. 30077

Date 4/30/98