

MAR 9 8 1999

\$7.00
\$2.00

SECTION

KENT COUNTY REMONUMENTATION

LAND CORNER RECORDATION CERTIFICATE
Filing Requirement of Act 74, Mich. P.A. 1970

For corners in

KENT COUNTY
(County)

Located in:

Corner Code #

- 1. Public Land Survey T 9N R 12W F-9
- T R
- T R
- T R
- T R
- 2. Property Controlling S T R
- in Section S T R
- 3. Miscellaneous S T R
- Property in Sec. S T R

STATE OF MICHIGAN
COUNTY OF KENT
RECEIVED FOR RECORD
98 MAR -5 AM 8:29
REG. OF DEEDS
Lucy Bond

10455
Register of Deeds Stamp & File Number

- 4. Lot No. _____, Recorded Plat _____
- 5. Private Claims _____

I, Kirk Breitels, in a field survey on Jan. 12, 19 98 do hereby state that under requirements of P.A. 74, Michigan P.A. of 1970, the corner points mentioned in lines 1 and 2 above were in conformance with regulations and rules therefore as required in the current manual of survey instructions of the United States Department of the Interior, Bureau of Land Management or by a decree of a Court of Law and for that the corner points mentioned in lines 3, 4 and 5 above were in conformance with the rules of the Michigan Board of Land Surveyors or by a Decree of a Court of Law; established, re-established, monumented, recovered, found as expressed below:

NOTE: Not more than 2 corners, all in the same town and range, may be recorded on this certificate.

A	B	C	D	E	F	G	H	I	J	K	L	M
1												
2	6	5	4	3	2	1						
3												
4	7	8	9	10	11	12						
5												
6	18	17	16	15	14	13						
7												
8	19	20	21	22	23	24						
9												
10	30	29	28	27	26	25						
11												
12	31	32	33	34	35	36						
13												

A. Description of original monument and accessories and/or subsequent restoration:

- F-9 1837 GLO Whitcomb Set Post
- 1935 Kent Co. Wits Stone
- 1984 LCRC #3940 Kolehouse Set Kent County Monument
- 1991 LCRC #6166 Byl Kent County Monument

P.A. 345 1990 KENT COUNTY
PEER APPROVED 2/19/98
CHAIRMAN Randy J. Kolehouse

The position of this corner was previously approved by the Kent County Remonumentation Peer Group, monumented by Randy J. Kolehouse on 10-3-84 and was recorded per LCRC #3940.

B. Description of corner evidence found and/or method applied in restoring or reestablishing corner:

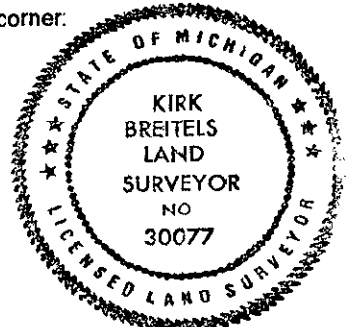
F-9 Found Kent County Monument (Harrison) per witnesses from above LCRC as set by Randy J. Kolehouse in place of the 1/2" Rebar he found over a 3/4" Iron and Stone. All check with Kent Co. Wits. and information of others.

- | | | | |
|------------|---|------------|---|
| LCRC #3940 | Nail & Remon. tag 24" Maple S70°W 126.50' | LCRC #6166 | Nail & Remon. tag 27" Maple S70°W 126.34' |
| | Nail & Remon. tag 3" Elm N30°E 24.40' | | Nail & Remon. tag 6" Elm N30°E 24.36' |
| | C/L 4" Cherry N50°W 68.9' | | Nail & Remon. tag 16" Apple N55°E 142.80' |
| | Top "L" fence post South 26.10' | | |
| | 2' North of C/L 12 Mile Rd. E-W | | |
| | On line with fence running South | | |

The selected location is accepted by me and is generally accepted by professional surveyors as the best available evidence of the position of the original corner.

C. Description of monument for corner and accessories established to perpetuate locating the position of the corner:

- F-9 Standard Kent County Monument
- Nail & KC Remon. tag N. side 30" Maple S70°W 126.30'
- Nail & KC Remon. tag S. side P. Pole N65°E 52.58'
- Nail & KC Remon. tag W. side 6" Apple N25°W 49.20'
- Nail & KC Remon. tag SW side 6" Apple N55°W 77.86'



Signed by Kirk Breitels
Surveyor's Michigan License No. 30077

Date 2/19/98