

**SURVEY & REMONUMENTATION**

**KENT COUNTY REMONUMENTATION**

**LAND CORNER RECORDATION CERTIFICATE**  
Filing Requirement of Act 74, Mich. P.A. 1970

MAR 08 1999

SECTION \_\_\_\_\_

For corners in

KENT COUNTY  
(County)

Located in: \_\_\_\_\_ Corner Code # \_\_\_\_\_

- 1. Public Land Survey T 9N R 12W G-1
- 2. Property Controlling in Section T \_\_\_\_\_ R \_\_\_\_\_
- 3. Miscellaneous Property in Sec. T \_\_\_\_\_ R \_\_\_\_\_

- 4. Lot No. \_\_\_\_\_, Recorded Plat \_\_\_\_\_
- 5. Private Claims \_\_\_\_\_

I, Kirk Breitels, in a field survey on Feb. 20, 1998 do hereby state that under requirements of P.A. 74, Michigan P.A. of 1970, the corner points mentioned in lines 1 and 2 above were in conformance with regulations and rules therefore as required in the current manual of survey instructions of the United States Department of the Interior, Bureau of Land Management or by a decree of a Court of Law and for that the corner points mentioned in lines 3, 4 and 5 above were in conformance with the rules of the Michigan Board of Land Surveyors or by a Decree of a Court of Law; established, re-established, monumented, recovered, found as expressed below:

NOTE: Not more than 2 corners, all in the same town and range, may be recorded on this certificate.

**A. Description of original monument and accessories and/or subsequent restoration:**

G-1	1837	GLO	Whitcomb	Set Post
	1958	Kent Co. Wits		1" Iron
	1980	LCRC #1384	Jonker	"T" Iron & 1" Round Iron
	1992	LCRC #6605	Bueche	Set Kent County Monument

P.A. 345 1990 KENT COUNTY  
PEER APPROVED 4/30/98  
CHAIRMAN [Signature]

The position of this corner was previously approved by the Kent County Remonumentation Peer Group, monumented by John C. Bueche on 10-12-92 and was recorded per LCRC#6605.

**B. Description of corner evidence found and/or method applied in restoring or reestablishing corner:**

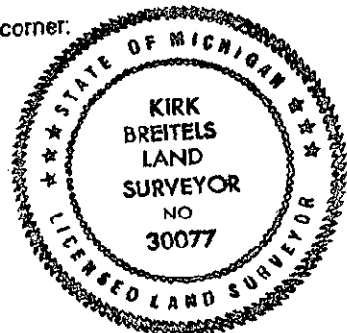
G-1 Found Kent County Monument (Harrison) per witnesses from above LCRC as set by John C. Bueche in place of the Iron he found. Said Iron checks with Kent Co. Wits. and LCRC #1384.

LCRC #6605	West	15.70'
Nail & Remon. tag N. side 6" Oak	S65°E	51.50'
SW cor. tower leg	S80°E	46.70'
NW cor. tower leg	S75°W	12.35'
Nail & Remon. tag top of cor. fence post		
West side of N-S power line		

The selected location is accepted by me and is generally accepted by professional surveyors as the best available evidence of the position of the original corner.

**C. Description of monument for corner and accessories established to perpetuate locating the position of the corner:**

G-1 Standard Kent County Monument	West	16.70'
Nail & KC Remon. tag N. side 6" Oak	S65°E	51.50'
SW corner tower leg	S80°E	46.70'
NW corner tower leg	S75°W	12.28'
Nail & KC Remon. tag top of corner fence post	N90°W	29.41'
Nail & KC Remon. tag N. side 3" Oak	West	12.20'
Kent Co. Mon. (H-13, T10N, R12W)		



Signed by [Signature]  
Surveyor's Michigan License No. 30077

Date 4/30/98

STATE OF MICHIGAN  
 COUNTY OF KENT  
 RECEIVED FOR RECORDING  
 98 MAY 21 AM 8:32  
 REG. OF DEEDS  
[Signature]

**10623**  
Register of Deeds Stamp & File Number

1	A	B	C	D	E	F	G	H	I	J	K	L	M
2		6		5		4		3		2		1	
3													
4		7		8		9		10		11		12	
5													
6		18		17		16		15		14		13	
7													
8		19		20		21		22		23		24	
9													
10		30		29		28		27		26		25	
11													
12		31		32		33		34		35		36	
13													