

MAR 08 1999

\$7.00
\$2.00

KENT COUNTY REMONUMENTATION

SECTION

LAND CORNER RECORDATION CERTIFICATE
Filing Requirement of Act 74, Mich. P.A. 1970

For corners in

KENT COUNTY

(County)

Located In:

Corner Code #

- 1. Public Land Survey T 9N R 12W G-2
- T R
- T R
- T R
- 2. Property Controlling S T R
- in Section S T R
- 3. Miscellaneous S T R
- Property in Sec. S T R

- 4. Lot No. _____, Recorded Plat _____
- 5. Private Claims _____

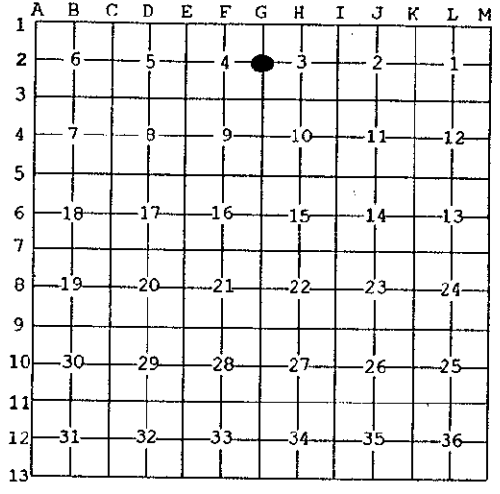
STATE OF MICHIGAN
 COUNTY OF KENT
 RECEIVED FOR RECORD
 98 MAR -5 AM 8:29
 REG. OF DEEDS
David Hand

10457

Register of Deeds Stamp & File Number

I, Kirk Breitels, in a field survey on Jan. 13, 1998 do hereby state that under requirements of P.A. 74, Michigan P.A. of 1970, the corner points mentioned in lines 1 and 2 above were in conformance with regulations and rules therefore as required in the current manual of survey instructions of the United States Department of the Interior, Bureau of Land Management or by a decree of a Court of Law and /or that the corner points mentioned in lines 3, 4 and 5 above were in conformance with the rules of the Michigan Board of Land Surveyors or by a Decree of a Court of Law; established, re-established, monumented, recovered, found as expressed below:

NOTE: Not more than 2 corners, all in the same town and range, may be recorded on this certificate.



A. Description of original monument and accessories and/or subsequent restoration:

- G-2 1837 GLO Whitcomb Set Post
- 1958 Kent Co. Wits 1" Iron
- 1980 LCRC #1384 Jonker 1" Iron
- 1982 LCRC #2623 Nederveld Set Kent County Monument
- 1991 LCRC #6169 Byl Kent County Monument

P.A. 345 1990 KENT COUNTY
 PEER APPROVED 2/19/98
 CHAIRMAN *Harshbarger*

The position of this corner was previously approved by the Kent County Remonumentation Peer Group, monumented by Gordon D. Nederveld on 1-25-82 and was recorded per LCRC #2623.

B. Description of corner evidence found and/or method applied in restoring or reestablishing corner:

- G-2 Found Kent County Monument (Harrison) per witnesses from above LCRC as set by Gordon D. Nederveld in place of the 1/2" Rerod over a Round Iron he found. Both check with Kent Co. Wits. and LCRC #1384.
- LCRC #2623 Nail & Remon. tag P. Pole N52°E 78.40'
- LCRC #6169 Nail & Remon. tag P. Pole S58°W 188.88'
- Nail & Remon. tag P. Pole S58°W 188.88'
- W'y leg CPC tower N14°E 219.03'
- W'y leg CPC tower N14°E 219.03'
- CPC "T" Iron N90°E 32.92'
- CPC "T" Iron N00°E 33.02'

The selected location is accepted by me and is generally accepted by professional surveyors as the best available evidence of the position of the original corner.

C. Description of monument for corner and accessories established to perpetuate locating the position of the corner:

- G-2 Standard Kent County Monument
- Nail & KC Remon. tag NE side P. Pole N52°E 78.40'
- Nail & KC Remon. tag SE side P. Pole S58°W 188.88'
- Westerly leg of CP Co. tower (at ground) N14°E 219.03'
- CP Co. "T" Iron N00°E 33.02'



Signed by *Kirk Breitels*
 Surveyor's Michigan License No. 30077

Date 2/19/98