

SURVEY & REMONUMENTATION

MAR 08 1999

\$7.00
\$2.00

SECTION

KENT COUNTY REMONUMENTATION

LAND CORNER RECORDATION CERTIFICATE
Filing Requirement of Act 74, Mich. P.A. 1970

For corners in

<u>KENT COUNTY</u> (County)	Located In:	Corner Code #
1. Public Land Survey	T <u>9N</u> R <u>12W</u>	<u>G-5</u>
	T _____ R _____	_____
	T _____ R _____	_____
	T _____ R _____	_____
2. Property Controlling in Section	S _____ T _____ R _____	_____
	S _____ T _____ R _____	_____
3. Miscellaneous Property in Sec.	S _____ T _____ R _____	_____
	S _____ T _____ R _____	_____

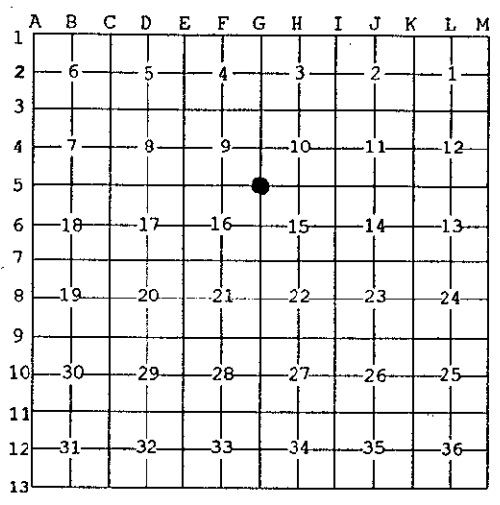
STATE OF MICHIGAN
COUNTY OF KENT
RECEIVED FOR RECORD
98 MAR -5 AM 8:29
REG. OF DEEDS
Lucy Spauld

10459

Register of Deeds Stamp & File Number

4. Lot No. _____, Recorded Plat _____
5. Private Claims _____

I, Kirk Breitels, in a field survey on Jan. 13, 19 98 do hereby state that under requirements of P.A. 74, Michigan P.A. of 1970, the corner points mentioned in lines 1 and 2 above were in conformance with regulations and rules therefore as required in the current manual of survey instructions of the United States Department of the Interior, Bureau of Land Management or by a decree of a Court of Law and /or that the corner points mentioned in lines 3, 4 and 5 above were in conformance with the rules of the Michigan Board of Land Surveyors or by a Decree of a Court of Law; established, re-established, monumented, recovered, found as expressed below:



NOTE: Not more than 2 corners, all in the same town and range, may be recorded on this certificate.

A. Description of original monument and accessories and/or subsequent restoration:

G-5	1837	GLO	Whitcomb	Set Post
	1958	Kent Co. Wits		Concrete Monument
	1954-64	Williams & Works		Concrete Monument
	1983	LCRC #3668	Chettleburgh	Set Kent County Monument in Mon. Box
	1991	LCRC #6172	Byl	Kent County Monument in Mon. Box

P.A. 345 1990 KENT COUNTY
PEER APPROVED 2/19/98
CHAIRMAN *Harry Stalder*

The position of this corner was previously approved by the Kent County Remonumentation Peer Group, monumented by Thomas M. Chettleburgh on 12-21-83 and was recorded per LCRC #3668.

B. Description of corner evidence found and/or method applied in restoring or reestablishing corner:

G-5 Found Kent County Monument (Harrison) per witnesses from above LCRC as set by Thomas M. Chettleburgh in place of the Concrete Monument he found inside a Mon. Box. Said Concrete Monument checks with Kent Co. Wits. and Williams & Works.

LCRC #3668		LCRC #6172	
Nail & Remon. tag MBT Pole	N08°E 244.35'	Nail & Remon. tag Tw. 16" B. Elder	N78°W 131.09'
Nail & Remon. tag Util. Pole stump	S42°E 28.71'	Nail & Remon. tag Tw. 12" Elm	N72°W 80.30'
Nail & Remon. tag Tw. 12" B. Elder	N78°W 131.06'	Nail & Remon. tag dead 14" Elm	N06°W 181.93'
Nail & Remon. tag Tw. 6" Elm	N72°W 80.55'	Nail & Remon. tag Tw. 8" Ash	N10°W 179.10'
Nail & Remon. tag 14" Elm	N06°W 181.93'	N. edge N. leg road sign	S85°E 19.92'

The selected location is accepted by me and is generally accepted by professional surveyors as the best available evidence of the position of the original corner.

C. Description of monument for corner and accessories established to perpetuate locating the position of the corner:

G-5 Standard Kent County Monument in Mon. Box	
Nail & KC Remon. tag S. side Tw. 18" Box Elder	N78°W 131.09'
Nail & KC Remon. tag S. side Tw. 16" Elm	N72°W 80.30'
Nail & KC Remon. tag E. side 12" Ash	N10°W 178.20'
N. edge N. leg of road sign	S85°E 19.92'
C/L top Tele. Pedestal	S30°E 46.17'



Signed by *Kirk Breitels*
Surveyor's Michigan License No. 30077

Date 2/19/98