

\$7.00
\$2.00

MAR 08 1998

KENT COUNTY REMONUMENTATION

SECTION

LAND CORNER RECORDATION CERTIFICATE
Filing Requirement of Act 74, Mich. P.A. 1970

STATE OF MICHIGAN
COUNTY OF KENT
RECORDED FOR RECORD
98 MAR -5 AM 9:29
REG. OF DEEDS
W. J. Bond

For corners in

KENT COUNTY
(County)

Located In:

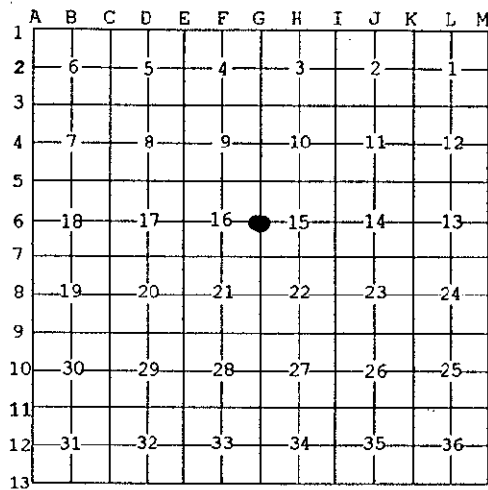
Corner Code #

1. Public Land Survey	T 9N	R 12W	G-6
	T	R	
	T	R	
	T	R	
2. Property Controlling in Section	S	T	R
	S	T	R
3. Miscellaneous Property in Sec.	S	T	R
	S	T	R

10460

Register of Deeds Stamp & File Number

4. Lot No. _____, Recorded Plat _____
5. Private Claims _____



I, Kirk Breitels, in a field survey on Jan. 13, 19 98 do hereby state that under requirements of P.A. 74, Michigan P.A. of 1970, the corner points mentioned in lines 1 and 2 above were in conformance with regulations and rules therefore as required in the current manual of survey instructions of the United States Department of the Interior, Bureau of Land Management or by a decree of a Court of Law and for that the corner points mentioned in lines 3, 4 and 5 above were in conformance with the rules of the Michigan Board of Land Surveyors or by a Decree of a Court of Law, established, re-established, monumented, recovered, found as expressed below:

NOTE: Not more than 2 corners, all in the same town and range, may be recorded on this certificate.

A. Description of original monument and accessories and/or subsequent restoration:

G-6	1837	GLO	Whitcomb	Set Post
	1961	Kent Co. Wits		Mon. Box
	1971	LCRC #105	Chambers	1" Iron in Mon. Box
	1980	LCRC #1752	Merdzinski	Set Kent County Monument in Mon. Box
	1991	LCRC #6173	Byl	Kent County Monument in Mon. Box

P.A. 345 1990 KENT COUNTY
PEER APPROVED 2/19/98
CHAIRMAN *Harry Kube*

The position of this corner was previously approved by the Kent County Remonumentation Peer Group, monumented by John A. Merdzinski on 12-16-80 and was recorded per LCRC #1752.

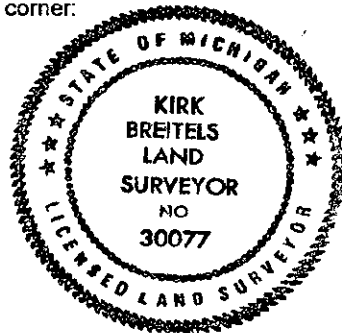
B. Description of corner evidence found and/or method applied in restoring or reestablishing corner:

G-6 Found Kent County Monument (Harrison) per witnesses from above LCRC as set by John A. Merdzinski in place of the 1" Iron over a Conc. Spike he found inside a Mon. Box. Both check with Kent Co. Wits. and LCRC #105.	
LCRC #1752	LCRC #6173
SW corner hse. foundation N70°E 92.62'	SW corner hse. foundation N70°E 92.62'
Nail & Remon. tag 36" Beech N40°E 43.63'	Nail & Remon. tag 36" Beech N40°E 44.31'
Nail & Remon. tag 30" Oak S75°E 40.56'	Nail & Remon. tag 36" Oak S75°E 40.57'
Nail & Remon. tag 8" Oak S90°W 31.32'	Nail & Remon. tag 10" Oak S90°W 31.35'
Nail & Remon. tag 8" Elm N30°W 71.99'	"X" cut top of conc. culv. S50°W 33.40'
"X" cut top of conc. culv. S50°W 33.57'	Nail & Remon. tag P. Pole S35°W 60.40' S90°W 33.05'

The selected location is accepted by me and is generally accepted by professional surveyors as the best available evidence of the position of the original corner.

C. Description of monument for corner and accessories established to perpetuate locating the position of the corner:

G-6 Standard Kent County Monument in Mon. Box	
SW corner house foundation N70°E 92.62'	
Nail & KC Remon. tag S. side 36" Oak S75°E 40.57'	
Nail & KC Remon. tag N. side 12" Oak S90°W 31.35'	
"X" cut on top of concrete culvert S50°W 33.40'	
Nail & KC Remon. tag W. side P. Pole S35°W 60.50'	
Steel bar & cap (All-Points) S90°W 33.05'	



Signed by *Kirk Breitels*
Surveyor's Michigan License No. 30077

Date 2/19/98