

\$7.00  
\$2.00  
MAR 08 1999  
SECTION

KENT COUNTY REMONUMENTATION

LAND CORNER RECORDATION CERTIFICATE  
Filing Requirement of Act 74, Mich. P.A. 1970

For corners in

KENT COUNTY  
(County)

Located In:

Corner Code #

- 1. Public Land Survey  
T 9N R 12W      G-9  
T \_\_\_\_\_ R \_\_\_\_\_  
T \_\_\_\_\_ R \_\_\_\_\_  
T \_\_\_\_\_ R \_\_\_\_\_
- 2. Property Controlling in Section  
S \_\_\_\_\_ T \_\_\_\_\_ R \_\_\_\_\_  
S \_\_\_\_\_ T \_\_\_\_\_ R \_\_\_\_\_
- 3. Miscellaneous Property in Sec.  
S \_\_\_\_\_ T \_\_\_\_\_ R \_\_\_\_\_  
S \_\_\_\_\_ T \_\_\_\_\_ R \_\_\_\_\_

STATE OF MICHIGAN  
COUNTY OF KENT  
RECEIVED FOR RECORD  
98 MAR -5 AM 8:29  
REG. OF DEEDS  
*Paul J. Bond*

10462  
Register of Deeds Stamp & File Number

- 4. Lot No. \_\_\_\_\_, Recorded Plat \_\_\_\_\_
- 5. Private Claims \_\_\_\_\_

A	B	C	D	E	F	G	H	I	J	K	L	M
1												
2	6	5	4	3	2	1						
3												
4	7	8	9	10	11	12						
5												
6	18	17	16	15	14	13						
7												
8	19	20	21	22	23	24						
9												
10	30	29	28	27	26	25						
11												
12	31	32	33	34	35	36						
13												

I, Kirk Breitels, in a field survey on Jan. 12, 1998 do hereby state that under requirements of P.A. 74, Michigan P.A. of 1970, the corner points mentioned in lines 1 and 2 above were in conformance with regulations and rules therefore as required in the current manual of survey instructions of the United States Department of the Interior, Bureau of Land Management or by a decree of a Court of Law and /or that the corner points mentioned in lines 3, 4 and 5 above were in conformance with the rules of the Michigan Board of Land Surveyors or by a Decree of a Court of Law; established, re-established, monumented, recovered, found as expressed below:

NOTE: Not more than 2 corners, all in the same town and range, may be recorded on this certificate.

A. Description of original monument and accessories and/or subsequent restoration:

- G-9 1837 GLO Whitcomb Set Post
- 1958 Kent Co. Wits 1" Iron
- 1980 LCRC #1369 Stadt 1" Iron
- 1982 LCRC #2945 Merdzinski Set Kent County Monument
- 1991 LCRC #6175 Byl Kent County Monument

P.A. 345 1990 KENT COUNTY  
PEER APPROVED 2/19/98  
CHAIRMAN *Harry Kube*

The position of this corner was previously approved by the Kent County Remonumentation Peer Group, monumented by John A. Merdzinski on 4-12-82 and was recorded per LCRC #2945.

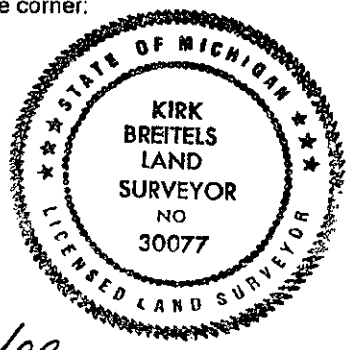
B. Description of corner evidence found and/or method applied in restoring or reestablishing corner:

- G-9 Found Kent County Monument (Harrison) per witnesses from above LCRC as set by John A. Merdzinski in place of the 1" Iron inside a 2" Iron over a Stone he found. All check with Kent Co. Wits. and LCRC #1369.
- LCRC #2945      LCRC #6175
- Nail & Remon. tag 42" Oak    N80°W 106.16'    Nail & Remon. tag 60" Oak    N80°W 106.16'
- Nail & Remon. tag P. Pole    S45°W 84.42'    Nail & Remon. tag P. Pole    S45°W 84.82'
- NW corner 1' x 2.5' MBT Box    S30°E 104.90'    NW corner 1' x 2.5' MBT Box    S30°E 104.90'
- C/L 3" Apple    S45°E 92.15'    Nail & Remon. tag 6" Apple    S45°E 103.27'
- On C/L 12 Mile Rd.
- 2' West of C/L Laubach Rd.

The selected location is accepted by me and is generally accepted by professional surveyors as the best available evidence of the position of the original corner.

C. Description of monument for corner and accessories established to perpetuate locating the position of the corner:

- G-9 Standard Kent County Monument
- NW corner 1' x 2.5' Telephone control box    S30°E 104.90'
- Nail & KC Remon. tag SW side P. Pole    S45°E 58.12'
- Nail & KC Remon. tag N. side P. Pole    S80°E 300.12'
- Nail & KC Remon. tag S. side wood fence post    N80°W 155.67'
- C/L fence post at SE corner gas yard    S65°W 245.44'



Signed by *Kirk Breitels*  
Surveyor's Michigan License No. 30077

Date 2/19/98