

MAR 08 1999

KENT COUNTY REMONUMENTATION

SECTION

LAND CORNER RECORDATION CERTIFICATE  
 Filing Requirement of Act 74, Mich. P.A. 1970

For corners in  
KENT COUNTY  
 (County)

Located In:	Corner Code #
T <u>9N</u> R <u>12W</u>	H-2
T _____ R _____	_____
T _____ R _____	_____
T _____ R _____	_____
S _____ T _____ R _____	_____
S _____ T _____ R _____	_____
S _____ T _____ R _____	_____
S _____ T _____ R _____	_____

1. Public Land Survey

2. Property Controlling  
 in Section

3. Miscellaneous  
 Property in Sec.

4. Lot No. \_\_\_\_\_, Recorded Plat \_\_\_\_\_  
 5. Private Claims \_\_\_\_\_

STATE OF MICHIGAN  
 COUNTY OF KENT  
 RECEIVED FOR RECORD  
 98 OCT -7 AM 10:15  
 REG. OF DEEDS  
*Luis Pineda*

10717

Register of Deeds Stamp & File Number

I, Kirk Breitels, in a field survey on July 13, 1998 do hereby state that under requirements of P.A. 74, Michigan P.A. of 1970, the corner points mentioned in lines 1 and 2 above were in conformance with regulations and rules therefore as required in the current manual of survey instructions of the United States Department of the Interior, Bureau of Land Management or by a decree of a Court of Law and /or that the corner points mentioned in lines 3, 4 and 5 above were in conformance with the rules of the Michigan Board of Land Surveyors or by a Decree of a Court of Law; established, re-established, monumented, recovered, found as expressed below:

	A	B	C	D	E	F	G	H	I	J	K	L	M
1													
2		6		5		4		3		2		1	
3													
4		7		8		9		10		11		12	
5													
6		18		17		16		15		14		13	
7													
8		19		20		21		22		23		24	
9													
10		30		29		28		27		26		25	
11													
12		31		32		33		34		35		36	
13													

NOTE: Not more than 2 corners, all in the same town and range, may be recorded on this certificate.

A. Description of original monument and accessories and/or subsequent restoration:

H-2 1837 GLO Whitcomb Not Set  
 1992 LCRC #6607 Bueche Set Kent County Monument at Intersection of 1/4 lines

The position of this corner was previously approved by the Kent County Remonumentation Peer Group, monumented by John C. Bueche on 10-12-92 and was recorded per LCRC #6607.

P.A. 345 1990 KENT COUNTY

PEER APPROVED 9/24/98

CHAIRMAN Harry Fisher

B. Description of corner evidence found and/or method applied in restoring or reestablishing corner:

H-2 Found Kent County Monument (Harrison) per witnesses from above LCRC as set by John C. Bueche.  
 LCRC #6607

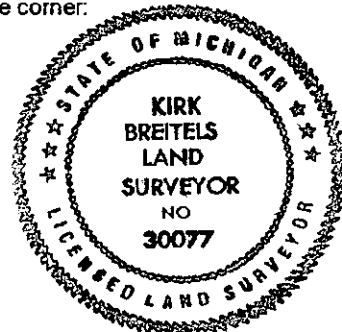
Nail & Remon. tag S. side 36" Maple N70°W 40.88'  
 Nail & Remon. tag E. side 24" Ash S25°W 30.59'  
 Nail & Remon. tag NW side 10" Maple S65°W 58.99'  
 Nail & Remon. tag N. side dbl. 8"-10" Maple S75°W 86.41'  
 Nail & Remon. tag S. side 30" Maple N80°W 76.67'  
 Iron S. 0.2' & W. 2.11'

The selected location is accepted by me and is generally accepted by professional surveyors as the best available evidence of the position of the corner.

C. Description of monument for corner and accessories established to perpetuate locating the position of the corner:

H-2 Standard Kent County Monument  
 Nail & KC Remon. tag S. side 38" Maple N70°W 40.96'  
 Nail & KC Remon. tag E. side 24" Ash S25°W 30.67'  
 Nail & KC Remon. tag NW side dbl. 10" Maple S65°W 59.04'  
 Nail & KC Remon. tag N. side dbl. 10"-20" Maple S75°W 86.46'  
 Nail & KC Remon. tag S. side 30" Maple N80°W 76.67'  
 Iron S. 0.2' & W. 2.11'

Corner is on N. edge of gravel road and 50' West of Hse. #2000  
 Mon. is 0.1' N. ± & 0.1' E. ± of Intersection of 1/4 lines.



Signed by Kirk Breitels  
 Surveyor's Michigan License No. 30077

Date 9/24/98