

MAR 08 1999

KENT COUNTY REMONUMENTATION

SECTION

LAND CORNER RECORDATION CERTIFICATE
Filing Requirement of Act 74, Mich. P.A. 1970

For corners in
KENT COUNTY
(County)

Located In:	Corner Code #
T9N R12W	H-4
T R	
T R	
T R	
S T R	
S T R	
S T R	
S T R	

- 1. Public Land Survey
- 2. Property Controlling in Section
- 3. Miscellaneous Property in Sec.

4. Lot No. _____, Recorded Plat _____
 5. Private Claims _____

STATE OF MICHIGAN
 COUNTY OF KENT
 RECEIVED FOR RECORD
 98 OCT -7 AM 10:15
 REG. OF DEEDS
Lucy Bond

10718

Register of Deeds Stamp & File Number

I, Kirk Breitels, in a field survey on June 25, 1998 do hereby state that under requirements of P.A. 74, Michigan P.A. of 1970, the corner points mentioned in lines 1 and 2 above were in conformance with regulations and rules therefore as required in the current manual of survey instructions of the United States Department of the Interior, Bureau of Land Management or by a decree of a Court of Law and /or that the corner points mentioned in lines 3, 4 and 5 above were in conformance with the rules of the Michigan Board of Land Surveyors or by a Decree of a Court of Law; established, re-established, monumented, recovered, found as expressed below:

	A	B	C	D	E	F	G	H	I	J	K	L	M
1													
2	6	5	4	3	2	1							
3													
4	7	8	9	10	11	12							
5													
6	18	17	16	15	14	13							
7													
8	19	20	21	22	23	24							
9													
10	30	29	28	27	26	25							
11													
12	31	32	33	34	35	36							
13	*												

NOTE: Not more than 2 corners, all in the same town and range, may be recorded on this certificate.

A. Description of original monument and accessories and/or subsequent restoration:

H-4 1837 GLO	Not Set
1955 Williams & Works	Meas. 2653.0' N. of S 1/4 corner to intersection of fences E-W & N and accepted as corner.
1968 Consumers Power Co.	Computed Intersection of 1/4 lines
1979 MichCon	Computed Intersection of 1/4 lines

P.A. 345 1990 KENT COUNTY
 PEER APPROVED 7/23/98
 CHAIRMAN *Frank Huber*

B. Description of corner evidence found and/or method applied in restoring or reestablishing corner:

H-4 Established intersection of 1/4 lines and found nothing at corner.

Fence running West (jog in highway ROW fence) is 2' South.

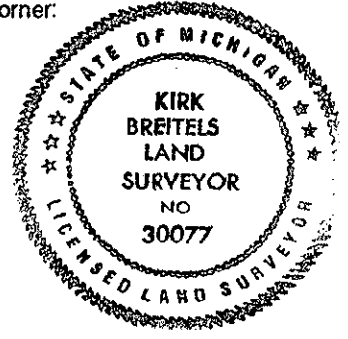
Meas. 2654.00' to S 1/4 corner - 1955 Williams & Works = 2653.0'

Measurements agree with Consumers Power and MichCon surveys ± (MichCon used different N 1/4 corner)

The Intersection of 1/4 lines is accepted by me and is generally accepted by professional surveyors as the best available evidence of the position of the corner.

C. Description of monument for corner and accessories established to perpetuate locating the position of the corner:

H-4 Set Standard Kent County Monument at the Intersection of 1/4 lines.	
Nail & KC Remon. tag E. side 15" Willow	N25°W 133.02'
Nail & KC Remon. tag SW side 15" Maple	N60°W 103.77'
Top of "L" fence corner post (fence N. & W.)	N90°W 55.09'
Nail & KC Remon. tag NW side 24" Elm	S50°W 69.22'
C/L highway M-37 - East 140' ±	



Signed by *Kirk Breitels*
 Surveyor's Michigan License No. 30077

Date 9/25/98