

SURVEY & REMONUMENTATION

KENT COUNTY REMONUMENTATION

MAR 08 1999

\$7.00  
\$2.00

LAND CORNER RECORDATION CERTIFICATE  
Filing Requirement of Act 74, Mich. P.A. 1970

SECTION

For corners in

KENT COUNTY

(County)

Located In:

Corner Code #

1. Public Land Survey

T 9N R 12W

H-5

T R

T R

T R

T R

2. Property Controlling in Section

S

T R

S

T R

3. Miscellaneous Property in Sec.

S

T R

S

T R

4. Lot No. \_\_\_\_\_, Recorded Plat \_\_\_\_\_

5. Private Claims \_\_\_\_\_

I, Kirk Breitels, in a field survey on Jan. 22, 1998 do hereby state that under requirements of P.A. 74, Michigan P.A. of 1970, the corner points mentioned in lines 1 and 2 above were in conformance with regulations and rules therefore as required in the current manual of survey instructions of the United States Department of the Interior, Bureau of Land Management or by a decree of a Court of Law and/or that the corner points mentioned in lines 3, 4 and 5 above were in conformance with the rules of the Michigan Board of Land Surveyors or by a Decree of a Court of Law; established, re-established, monumented, recovered, found as expressed below:

NOTE: Not more than 2 corners, all in the same town and range, may be recorded on this certificate.

A. Description of original monument and accessories and/or subsequent restoration:

H-5	1837	GLO	Whitcomb	Set Post
	1958	Kent Co. Wits		Stone
	1980	LCRC #1322	Nelson	3/4" Pipe
	1985	LCRC #4221	Kolehouse	Set Kent County Monument
	1995	LCRC #8293	Breitels	Kent County Monument

P.A. 345 1990 KENT COUNTY

PEER APPROVED 2/19/98  
CHAIRMAN Randy J. Kolehouse

The position of this corner was previously approved by the Kent County Remonumentation Peer Group, monumented by Randy J. Kolehouse on 4-29-85 and was recorded per LCRC #4211.

B. Description of corner evidence found and/or method applied in restoring or reestablishing corner:

H-5 Found Kent County Monument (Harrison) per witnesses from above LCRC as set by Randy J. Kolehouse in place of the 3/4" Iron he found next to a Stone. Said Iron checks with LCRC #1322. Kent Co. Wits. were gone.

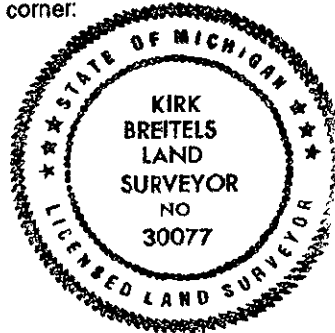
LCRC #4221		LCRC #8293
Nail & Remon. tag 8" C. Elm	East 20.74'	Nail & Remon. tag 15" C. Elm S90°E 20.74'
Nail & Remon. tag 12" Ash	N20°W 37.37'	Nail & Remon. tag Tw. 20" C. Elm N45°W 5.25'
Nail & Remon. tag Tw. 14" C. Elm	N45°W 5.25'	Nail & Remon. tag Tw. 18" C. Elm N88°W 44.03'
Nail & Remon. tag Tw. 12" C. Elm	N88°W 44.03'	Nail & Remon. tag Tw. 12" C. Elm N70°W 39.40'
Nail & Remon. tag 6" Maple	N70°W 39.40'	

The selected location is accepted by me and is generally accepted by professional surveyors as the best available evidence of the position of the original corner.

C. Description of monument for corner and accessories established to perpetuate locating the position of the corner:

H-5 Standard Kent County Monument

New Nail & KC Remon. tag S. side 18" C. Elm	S90°E 20.78'
New Nail & KC Remon. tag SW side Tw. 22" C. Elm	N45°W 5.13'
New Nail & KC Remon. tag S. side Tw. 20" C. Elm	N88°W 44.87'
New Nail & KC Remon. tag N. side Tw. 14" Maple	N70°W 39.55'



Signed by Kirk Breitels  
Surveyor's Michigan License No. 30077

Date 2/19/98

10465  
Register of Deeds Stamp & File Number

