

MAR 08 1999

KENT COUNTY REMONUMENTATION

SECTION

LAND CORNER RECORDATION CERTIFICATE
Filing Requirement of Act 74, Mich. P.A. 1970

STATE OF MICHIGAN
COUNTY OF KENT
RECEIVED FOR RECORD
38 OCT -7 AM 10:15
REG. OF DEEDS
Luis J. Bond

For corners in
KENT COUNTY
(County)

Located In:	Corner Code #
T 9N R 12W	H-6
T _____ R _____	_____
T _____ R _____	_____
T _____ R _____	_____
S _____ T _____ R _____	_____
S _____ T _____ R _____	_____
S _____ T _____ R _____	_____
S _____ T _____ R _____	_____

10719

Register of Deeds Stamp & File Number

1. Public Land Survey

2. Property Controlling in Section

3. Miscellaneous Property in Sec.

4. Lot No. _____, Recorded Plat _____
5. Private Claims _____

Kirk Breitels, in a field survey on Sept. 18, 1998 do hereby state that under requirements of P.A. 74, Michigan P.A. of 1970, the corner points mentioned in lines 1 and 2 above were in conformance with regulations and rules therefore as required in the current manual of survey instructions of the United States Department of the Interior, Bureau of Land Management or by a decree of a Court of Law and /or that the corner points mentioned in lines 3, 4 and 5 above were in conformance with the rules of the Michigan Board of Land Surveyors or by a Decree of a Court of Law; established, re-established, monumented, recovered, found as expressed below:

NOTE: Not more than 2 corners, all in the same town and range, may be recorded on this certificate.

	A	B	C	D	E	F	G	H	I	J	K	L	M
1													
2	6	5	4	3	2	1							
3													
4	7	8	9	10	11	12							
5													
6	18	17	16	15	14	13							
7													
8	19	20	21	22	23	24							
9													
10	30	29	28	27	26	25							
11													
12	31	32	33	34	35	36							
13													

A. Description of original monument and accessories and/or subsequent restoration:

H-6 1837 GLO Whitcomb Not Set
Kent Co. Wits Iron
1991 LCRC #5860 Bueche Set Kent County Monument at intersection of 1/4 lines

The position of this corner was previously approved by the Kent County Remonumentation Peer Group, monumented by John C. Bueche on 6-13-91 and was recorded per LCRC #5860.

P.A. 345 1990 KENT COUNTY
PEER APPROVED 9/24/98
CHAIRMAN Harry Huber

B. Description of corner evidence found and/or method applied in restoring or reestablishing corner:

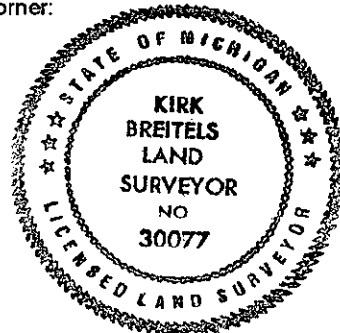
H-6 Found BROKEN Kent County Monument (Harrison) per witnesses from above LCRC as set by John C. Bueche. Said Monument checks within 0.1' of being at the intersection of 1/4 lines. Removed and reset 30" Kent County Monument. LCRC #5860

Nail & Remon. tag W. side 8" Cherry South 18.16'
Nail & Remon. tag NE side 4" Tree S45°E 16.36'
Nail & Remon. tag N. side 8" Cherry S75°W 39.10'
From C 1/4 to S 1/4 2655.16' From C 1/4 to N 1/4 2656.06'
From C 1/4 to E 1/4 2670.84' From C 1/4 to W 1/4 2670.78'
E-W fence is South 12' ± and at edge of plowed field

The selected location is accepted by me and is generally accepted by professional surveyors as the best available evidence of the position of the corner.

C. Description of monument for corner and accessories established to perpetuate locating the position of the corner:

H-6 Standard Kent County Monument
Set Nail & KC Remon. tag W. side 12" Cherry South 18.31'
Set Nail & KC Remon. tag N. side 12" Cherry S75°W 38.95'
Set Nail & KC Remon. tag N. side 8" stump East 77.34'
Set Nail & KC Remon. tag E. side 4" Thornapple (in cluster) S35°E 27.17'
Edge of plowed field is 5' North & E-W fence is 12' South ±
C 1/4 to S 1/4 2655.20' C 1/4 to N 1/4 2656.04'
C 1/4 to E 1/4 2671.07' C 1/4 to W 1/4 2670.34'



Signed by Kirk Breitels
Surveyor's Michigan License No. 30077

Date 9/24/98