

SURVEY & REMONUMENTATION

MAR 08 1999

KENT COUNTY REMONUMENTATION

LAND CORNER RECORDATION CERTIFICATE
Filing Requirement of Act 74, Mich. P.A. 1970

\$7.00
\$2.00

SECTION

STATE OF MICHIGAN
COUNTY OF KENT
RECEIVED FOR RECORD
98 MAR -5 AM 8:29
REG. OF DEEDS
Lucy Bond

For corners in

KENT COUNTY
(County)

Located In:	Corner Code #
T 9N R 12W	I-4
T R	
T R	
T R	
S T R	
S T R	
S T R	
S T R	

1. Public Land Survey

2. Property Controlling in Section

3. Miscellaneous Property in Sec.

4. Lot No. _____, Recorded Plat _____
5. Private Claims _____

10471

Register of Deeds Stamp & File Number

I, Kirk Breitels, in a field survey on Jan. 6, 1998 do hereby state that under requirements of P.A. 74, Michigan P.A. of 1970, the corner points mentioned in lines 1 and 2 above were in conformance with regulations and rules therefore as required in the current manual of survey instructions of the United States Department of the Interior, Bureau of Land Management or by a decree of a Court of Law and for that the corner points mentioned in lines 3, 4 and 5 above were in conformance with the rules of the Michigan Board of Land Surveyors or by a Decree of a Court of Law; established, re-established, monumented, recovered, found as expressed below:

NOTE: Not more than 2 corners, all in the same town and range, may be recorded on this certificate.

1	A	B	C	D	E	F	G	H	I	J	K	L	M
2		6		5		4		3		2		1	
3													
4		7		8		9		10	●	11		12	
5													
6		18		17		16		15		14		13	
7													
8		19		20		21		22		23		24	
9													
10		30		29		28		27		26		25	
11													
12		31		32		33		34		35		36	
13													

A. Description of original monument and accessories and/or subsequent restoration:

- I-4 1837 GLO Whitcomb Set Post
- 1951-69 Williams & Works Iron - Iron in Mon. Box
- 1963 Kent Co. Wits Mon. Box
- 1979 LCRC #1326 Nelson Iron in Mon. Box
- 1985 LCRC #4212 Kolehouse Set Kent County Monument in Mon. Box
- 1995 LCRC #8299 Breitels Kent County Monument in Mon. Box

P.A. 345 1990 KENT COUNTY
PEER APPROVED 2/19/98
CHAIRMAN Randy Kolehouse

The position of this corner was previously approved by the Kent County Remonumentation Peer Group, monumented by Randy J. Kolehouse on 4-20-85 and was recorded per LCRC #4212.

B. Description of corner evidence found and/or method applied in restoring or reestablishing corner:

I-4 Found Kent County Monument (Harrison) per witnesses from above LCRC as set by Randy J. Kolehouse in place of the 3/4" Iron he found inside a Mon. Box. Said Iron checks with Kent Co. Wits. and LCRC #1326.

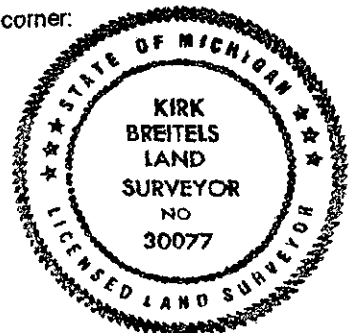
LCRC #4212	LCRC #8299
Nail & Remon. tag 30" Maple S75°E 30.85'	Nail & Remon. tag 36" Maple S75°E 30.83'
Nail & Remon. tag P. Pole S35°E 81.55'	Nail & Remon. tag P. Pole S35°E 81.55'
Nail & Remon. tag 28" Walnut S30°W 59.32'	Nail & Remon. tag 32" Walnut S30°W 69.44'
Nail & Remon. tag 14" Walnut N40°W 50.75'	Nail & Remon. tag 20" Walnut N40°W 50.68'

C/L (blacktop) Sparta Ave. N-S is East 0.7'

The selected location is accepted by me and is generally accepted by professional surveyors as the best available evidence of the position of the original corner.

C. Description of monument for corner and accessories established to perpetuate locating the position of the corner:

- I-4 Standard Kent County Monument in Mon. Box
- Nail & KC Remon. tag S. side 36" Maple S75°E 30.83'
- Nail & KC Remon. tag S. side CATV Pole S35°E 81.55'
- Nail & KC Remon. tag E. side 32" Walnut S30°W 69.44'
- Nail & KC Remon. tag E. side 20" Walnut N40°W 50.68'
- C/L (blacktop) Sparta Ave. N-S is East 0.7'



Signed by Kirk Breitels
Surveyor's Michigan License No. 30077

Date 2/19/98