

**SURVEY & REMONUMENTATION**

**KENT COUNTY REMONUMENTATION**

**LAND CORNER RECORDATION CERTIFICATE**  
Filing Requirement of Act 74, Mich. P.A. 1970

SECTION \_\_\_\_\_

For corners in

KENT COUNTY  
(County)

Located In:

Corner Code #

- |                                    |              |               |            |
|------------------------------------|--------------|---------------|------------|
| 1. Public Land Survey              | T <u>9</u> N | R <u>12</u> W | <u>J-5</u> |
|                                    | T _____      | R _____       | _____      |
|                                    | T _____      | R _____       | _____      |
|                                    | T _____      | R _____       | _____      |
| 2. Property Controlling in Section | S _____      | T _____       | R _____    |
|                                    | S _____      | T _____       | R _____    |
| 3. Miscellaneous Property in Sec.  | S _____      | T _____       | R _____    |
|                                    | S _____      | T _____       | R _____    |

STATE OF MICHIGAN  
COUNTY OF KENT  
RECEIVED FOR RECORD  
98 MAR -5 AM 8:30  
REG. OF DEEDS  
*Lucy Bond*

**10482**

Register of Deeds Stamp & File Number

4. Lot No. \_\_\_\_\_, Recorded Plat \_\_\_\_\_  
5. Private Claims \_\_\_\_\_

1	A	B	C	D	E	F	G	H	I	J	K	L	M
2		6		5		4		3		2		1	
3													
4		7		8		9		10		11		12	
5										●			
6		18		17		16		15		14		13	
7													
8		19		20		21		22		23		24	
9													
10		30		29		28		27		26		25	
11													
12		31		32		33		34		35		36	
13													

I, Kirk Breitels, in a field survey on Jan. 6, 19 98 do hereby state that under requirements of P.A. 74, Michigan P.A. of 1970, the corner points mentioned in lines 1 and 2 above were in conformance with regulations and rules therefore as required in the current manual of survey instructions of the United States Department of the Interior, Bureau of Land Management or by a decree of a Court of Law and /or that the corner points mentioned in lines 3, 4 and 5 above were in conformance with the rules of the Michigan Board of Land Surveyors or by a Decree of a Court of Law; established, re-established, monumented, recovered, found as expressed below:

NOTE: Not more than 2 corners, all in the same town and range, may be recorded on this certificate.

- A. Description of original monument and accessories and/or subsequent restoration:
- |     |      |               |          |                                      |
|-----|------|---------------|----------|--------------------------------------|
| J-5 | 1837 | GLO           | Whitcomb | Set Post                             |
|     | 1936 | Kent Co. Wits |          | Iron                                 |
|     | 1977 | LCRC #3254    | Hay      | Iron in Mon. Box                     |
|     | 1990 | LCRC #5602    | Bueche   | Set Kent County Monument in Mon. Box |
|     | 1995 | LCRC #8309    | Breitels | Kent County Monument                 |

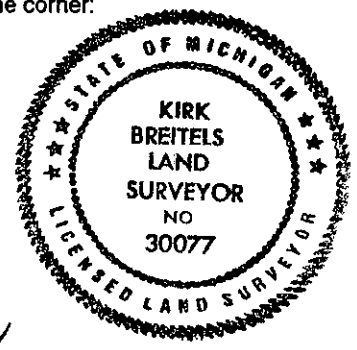
P.A. 345 1990 KENT COUNTY  
PEER APPROVED 2/19/98  
CHAIRMAN *John C. Bueche*

The position of this corner was previously approved by the Kent County Remonumentation Peer Group, monumented by John C. Bueche on 6-1-90 and was recorded per LCRC #5602.

- B. Description of corner evidence found and/or method applied in restoring or reestablishing corner:
- J-5 Found Kent County Monument (Harrison) per witnesses from above LCRC as set by John C. Bueche in place of the Concrete Monument he found inside a Mon. Box. Concrete Monument checks with Kent Co. Wits. and LCRC #3254.
- |            |                                |       |         |            |                                |       |         |
|------------|--------------------------------|-------|---------|------------|--------------------------------|-------|---------|
| LCRC #5602 | Nail & Remon. tag Tri. 10" Elm | S35°E | 34.67'  | LCRC #8309 | Nail & Remon. tag Tri. 16" Elm | S35°E | 34.64'  |
|            | Nail & Remon. tag Tw. 10" Elm  | S10°E | 83.84'  |            | Nail & Remon. tag Tw. 18" Elm  | S10°E | 83.78'  |
|            | Nail & Remon. tag Tw. 6" Apple | N30°E | 99.85'  |            | Nail & Remon. tag Tw. 8" Apple | N30°E | 99.85'  |
|            | Nail & Remon. tag 18" Hickory  | N15°W | 162.47' |            | Nail & Remon. tag 22" Hickory  | N15°W | 162.47' |
- On C/L blacktop N-S

The selected location is accepted by me and is generally accepted by professional surveyors as the best available evidence of the position of the original corner.

- C. Description of monument for corner and accessories established to perpetuate locating the position of the corner:
- J-5 Standard Kent County Monument
- |  |       |         |
|--|-------|---------|
| Nail & KC Remon. tag W. side Tri. 16" Elm  | S35°E | 34.64'  |
| Nail & KC Remon. tag W. side Tw. 18" Elm   | S10°E | 83.78'  |
| Nail & KC Remon. tag W. side Tw. 10" Apple | N30°E | 99.94'  |
| Nail & KC Remon. tag W. side 24" Hickory   | N15°W | 162.43' |
- On C/L N-S asphalt road



Signed by *Kirk Breitels*  
Surveyor's Michigan License No. 30077

Date 2/19/98