

1/2 SURVEY & REMONUMENTATION
 MAR 08 1999

KENT COUNTY REMONUMENTATION

SECTION

LAND CORNER RECORDATION CERTIFICATE
 Filing Requirement of Act 74, Mich. P.A. 1970

STATE OF MICHIGAN
 COUNTY OF KENT
 RECEIVED FOR RECORD
 38 OCT -7 AM 10:15
 REG. OF DEEDS
Luis J. Bond

For corners in
 KENT COUNTY
 (County)

Located In:	Corner Code #
T 9N R 12W	J-6
T R	
T R	
T R	
S T R	
S T R	
S T R	
S T R	

- Public Land Survey
- Property Controlling in Section
- Miscellaneous Property in Sec.

10725

Register of Deeds Stamp & File Number

- Lot No. _____, Recorded Plat _____
- Private Claims _____

I, Kirk Breitels, in a field survey on June 29, 1998 do hereby state that under requirements of P.A. 74, Michigan P.A. of 1970, the corner points mentioned in lines 1 and 2 above were in conformance with regulations and rules therefore as required in the current manual of survey instructions of the United States Department of the Interior, Bureau of Land Management or by a decree of a Court of Law and /or that the corner points mentioned in lines 3, 4 and 5 above were in conformance with the rules of the Michigan Board of Land Surveyors or by a Decree of a Court of Law; established, re-established, monumented, recovered, found as expressed below:

NOTE: Not more than 2 corners, all in the same town and range, may be recorded on this certificate.

	A	B	C	D	E	F	G	H	I	J	K	L	M
1													
2		6		5		4		3		2		1	
3													
4		7		8		9		10		11		12	
5													
6		18		17		16		15		14		13	
7													
8		19		20		21		22		23		24	
9													
10		30		29		28		27		26		25	
11													
12		31		32		33		34		35		36	
13													

A. Description of original monument and accessories and/or subsequent restoration:

- J-6 1837 GLO Not Set
 1953-77 Williams & Works Set/Used Iron 17' North of C/L RR and at Intersection 1/4 lines
 P. Pole NW 28.40' 8" Butternut ENE 43.00' 8" Elm SE 61.70'
 Kent Co. Wits. No information
- 1978 LCRC #1195 Jonker 3/4" Iron
 P. Pole NW 28.87' 14" Walnut ENE 43.4' PK Nail South 17.00' P. Pole SSW 88.15'

B. Description of corner evidence found and/or method applied in restoring or reestablishing corner:

- J-6 Found 3/4" Iron Pipe per the following witnesses:
 PK Nail in P. Pole N45°W 28.95'
 Nail in 22" Walnut N65°E 43.39'
 PK Nail in P. Pole S25°W 88.15'
 3/4" Iron Pipe is 0.2 W. & 0.6' N. from intersection of 1/4 lines.

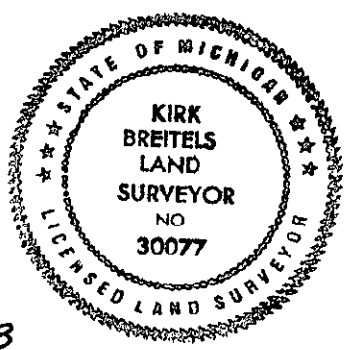
P.A. 345 1990 KENT COUNTY
 PEER APPROVED 7/23/98
 CHAIRMAN [Signature]

3/4" Iron Pipe has also been used in surveys by Byl, Prein & Newhof, Exxel Eng., Hay, Hackbardt and Roosien

The 3/4" Iron Pipe is accepted by me and is generally accepted by professional surveyors as the best available evidence of the position of the corner.

C. Description of monument for corner and accessories established to perpetuate locating the position of the corner:

- J-6 Set Standard Kent County Monument in place of the 3/4" Iron Pipe
 Nail & KC Remon. tag SW side P. Pole N45°W 28.95'
 Nail & KC Remon. tag N. side 22" Walnut N65°E 43.39'
 SE corner concrete headwall N90°E 30.53'
 Nail & KC Remon. tag W. side P. Pole S20°E 74.29'
 Nail & KC Remon. tag E. side P. Pole S25°W 88.15'
 SW corner concrete headwall N85°W 26.89'



Signed by [Signature]
 Surveyor's Michigan License No. 30077

Date 9/25/98