

MAR 08 1993

KENT COUNTY REMONUMENTATION

\$7.00  
\$2.00

SECTION

LAND CORNER RECORDATION CERTIFICATE  
Filing Requirement of Act 74, Mich. P.A. 1970

For corners in

KENT COUNTY

(County)

Located in:

Corner Code #

1. Public Land Survey

T 9N R 12W

K-3

T R

T R

T R

T R

2. Property Controlling in Section

S T R

S T R

3. Miscellaneous Property in Sec.

S T R

S T R

4. Lot No. , Recorded Plat

5. Private Claims

I, Kirk Breitels, in a field survey on April 27, 1998 do hereby state that under requirements of P.A. 74, Michigan P.A. of 1970, the corner points mentioned in lines 1 and 2 above were in conformance with regulations and rules therefore as required in the current manual of survey instructions of the United States Department of the Interior, Bureau of Land Management or by a decree of a Court of Law and /or that the corner points mentioned in lines 3, 4 and 5 above were in conformance with the rules of the Michigan Board of Land Surveyors or by a Decree of a Court of Law, established, re-established, monumented, recovered, found as expressed below:

NOTE: Not more than 2 corners, all in the same town and range, may be recorded on this certificate.

A. Description of original monument and accessories and/or subsequent restoration:

K-3	1837	GLO	Whitcomb	Set Post
	1971	LCRC #5	Bonnema	Set 1" Solid Iron Rod
	1982	LCRC #2892	Jonker	Set Kent County Monument
	1995	LCRC #8314	Breitels	Kent County Monument

The position of this corner was previously approved by the Kent County Remonumentation Peer Group, monumented by Robert J. Jonker on 6-14-82 and was recorded per LCRC #2892.

B. Description of corner evidence found and/or method applied in restoring or reestablishing corner:

K-3 Found Kent County Monument (Harrison) per witnesses from above LCRC as set by Robert J. Jonker in place of the 1" x 24" Solid Bar he found. Said Solid Bar checks with LCRC #5.

LCRC #2892	LCRC #8314
Nail & Remon. tag 18" Maple N25°E 22.08'	Nail & Remon. tag 22" Maple N25°E 22.1'
Nail & Remon. tag 24" Maple S60°E 13.93'	Nail & Remon. tag 28" Maple S60°E 13.8'
Nail & Remon. tag 12" Maple S90°W 4.42'	Nail & Remon. tag 16" Maple S90°W 4.5'
Nail & Remon. tag 12" Maple S35°W 16.42'	Nail & Remon. tag 18" Maple S35°W 16.4'
In swamp 100' ± S. of a pothole	In swamp 100' ± South of a pothole

The selected location is accepted by me and is generally accepted by professional surveyors as the best available evidence of the position of the original corner.

C. Description of monument for corner and accessories established to perpetuate locating the position of the corner:

K-3 Standard Kent County Monument
Nail & KC Remon. tag W. side 22" Maple N25°E 22.03'
Nail & KC Remon. tag N. side 28" Maple S60°E 13.95'
Nail & KC Remon. tag S. side 16" Maple S90°W 4.50'
Nail & KC Remon. tag E. side 18" Maple S35°W 16.42'
In swamp, 100' ± S. of a "pothole"

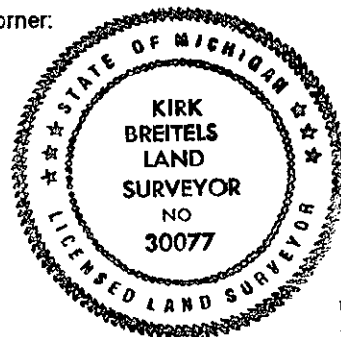
STATE OF MICHIGAN  
COUNTY OF KENT  
RECEIVED FOR RECORD  
90 MAY 21 AM 8:33  
REG. OF DEEDS  
*Luigi Standa*

10630

Register of Deeds Stamp & File Number

	A	B	C	D	E	F	G	H	I	J	K	L	M
1													
2	6		5		4		3		2		1		
3													
4	7		8		9		10		11		12		
5													
6	18		17		16		15		14		13		
7													
8	19		20		21		22		23		24		
9													
10	30		29		28		27		26		25		
11													
12	31		32		33		34		35		36		
13													

P.A. 345 1993 KENT COUNTY  
PEER APPROVED 4/30/98  
CHAIRMAN *Harry Huber*



Signed by *Kirk Breitels*  
Surveyor's Michigan License No. 30077

Date 4/30/98