

MAR 08 1999

KENT COUNTY REMONUMENTATION

\$7.00  
\$2.00

SECTION

LAND CORNER RECORDATION CERTIFICATE  
Filing Requirement of Act 74, Mich. P.A. 1970

STATE OF MICHIGAN  
COUNTY OF KENT  
RECEIVED FOR RECORD  
98 MAY 21 AM 8:33  
REG. OF DEEDS  
*Lucy Bond*

For corners in

KENT COUNTY (County)	Located in:	Corner Code #
1. Public Land Survey	T <u>2</u> N R <u>12</u> W	K-4
	T _____ R _____	_____
	T _____ R _____	_____
	T _____ R _____	_____
2. Property Controlling in Section	S _____ T _____ R _____	_____
	S _____ T _____ R _____	_____
3. Miscellaneous Property in Sec.	S _____ T _____ R _____	_____
	S _____ T _____ R _____	_____

10631  
Register of Deeds Stamp & File Number

4. Lot No. \_\_\_\_\_, Recorded Plat \_\_\_\_\_  
5. Private Claims \_\_\_\_\_

	A	B	C	D	E	F	G	H	I	J	K	L	M	
1														
2	6			5			4			3		2		1
3														
4	7			8			9			10		11		12
5														
6	10			17			16			15		14		13
7														
8	19			20			21			22		23		24
9														
10	30			29			28			27		26		25
11														
12	31			32			33			34		35		36
13														

I, Kirk Breitels, in a field survey on April 20, 1998 do hereby state that under requirements of P.A. 74, Michigan P.A. of 1970, the corner points mentioned in lines 1 and 2 above were in conformance with regulations and rules therefore as required in the current manual of survey instructions of the United States Department of the Interior, Bureau of Land Management or by a decree of a Court of Law and /or that the corner points mentioned in lines 3, 4 and 5 above were in conformance with the rules of the Michigan Board of Land Surveyors or by a Decree of a Court of Law; established, re-established, monumented, recovered, found as expressed below:

NOTE: Not more than 2 corners, all in the same town and range, may be recorded on this certificate.

A. Description of original monument and accessories and/or subsequent restoration:

K-4	1837	GLO	Whitcomb	Set Post
	1971	LCRC #85	Chambers	"T" Iron at fence corner
	1982	LCRC #2893	Jonker	Set Kent County Monument
	1995	LCRC #8315	Breitels	Kent County Monument

P.A. 345 1990 KENT COUNTY  
PEER APPROVED 4/30/98  
CHAIRMAN Ray Huber

The position of this corner was previously approved by the Kent County Remonumentation Peer Group, monumented by Robert J. Jonker on 6-14-82 and was recorded per LCRC#2893.

B. Description of corner evidence found and/or method applied in restoring or reestablishing corner:

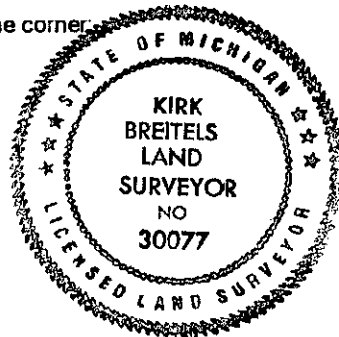
K-4 Found Kent County Monument (Harrison) per witnesses from above LCRC as set by Robert J. Jonker in place of the "T" Iron he found. Said "T" Iron checks with LCRC #85.

LCRC #2893	LCRC #8315
Nail & Remon. tag 26" Beech S20°E 45.55'	Nail & Remon. tag 30" Beech S20°E 45.50'
Nail & Remon. tag 26" Oak S60°E 35.27'	Nail & Remon. tag 30" Oak S60°E 35.20'
Nail & Remon. tag 12" Maple S80°W 19.78'	Nail & Remon. tag 16" Maple S80°W 19.67'
Nail & Remon. tag 10" Maple N00°E 7.42'	Nail & Remon. tag 12" Maple N00°E 7.37'
At 4 way fence corner	Nail & Remon. tag 20" Maple N15°W 20.03'
On tree lines E, W, N.	At 4 way fence corner & on tree lines to E, W, N

The selected location is accepted by me and is generally accepted by professional surveyors as the best available evidence of the position of the original corner.

C. Description of monument for corner and accessories established to perpetuate locating the position of the corner:

K-4 Standard Kent County Monument			
Nail & KC Remon. tag NE side 30" Beech	S20°E	45.50'	
Nail & KC Remon. tag N. side 30" Oak	S60°E	35.20'	
Nail & KC Remon. tag S. side 16" Maple	S80°W	19.67'	
Nail & KC Remon. tag E. side 12" Maple	N00°E	7.37'	
Nail & KC Remon. tag W. side 20" Maple	N15°W	20.03'	
At remains of fences N-S, E-W and tree lines E-W, N.			



Signed by Kirk Breitels  
Surveyor's Michigan License No. 30077

Date 4/30/98