

SURVEY & REMONUMENTATION

\$7.00  
\$2.00

MAR 08 1999

KENT COUNTY REMONUMENTATION

LAND CORNER RECORDATION CERTIFICATE  
Filing Requirement of Act 74, Mich. P.A. 1970

For corners in SECTION \_\_\_\_\_  
KENT COUNTY  
(County)

Located In:	Corner Code #
T9N R12W	K-6
T R	
T R	
T R	
S T R	
S T R	
S T R	
S T R	

- Public Land Survey
- Property Controlling in Section
- Miscellaneous Property in Sec.

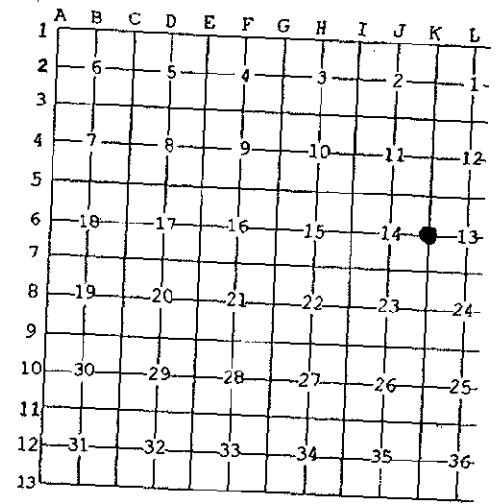
STATE OF MICHIGAN  
COUNTY OF KENT  
RECEIVED FOR RECORD  
98 MAY 21 AM 8:33  
REG. OF DEEDS  
*[Signature]*

10633  
Register of Deeds Stamp & File Number

- Lot No. \_\_\_\_\_, Recorded Plat \_\_\_\_\_
- Private Claims \_\_\_\_\_

I, Kirk Breitels, in a field survey on April 20, 1998 do hereby state that under requirements of P.A. 74, Michigan P.A. of 1970, the corner points mentioned in lines 1 and 2 above were in conformance with regulations and rules therefore as required in the current manual of survey instructions of the United States Department of the Interior, Bureau of Land Management or by a decree of a Court of Law and for that the corner points mentioned in lines 3, 4 and 5 above were in conformance with the rules of the Michigan Board of Land Surveyors or by a Decree of a Court of Law; established, re-established, monumented, recovered, found as expressed below:

NOTE: Not more than 2 corners, all in the same town and range, may be recorded on this certificate.



- A. Description of original monument and accessories and/or subsequent restoration:
- |                    |           |                          |
|--------------------|-----------|--------------------------|
| K-6 1837 GLO       | Whitcomb  | Set Post                 |
| 1965 Kent Co. Wits |           | RR tie fence post        |
| 1981 LCRC #2318    | Nederveld | RR tie fence post        |
| 1985 LCRC #4308    | Kolehouse | Set Kent County Monument |
| 1995 LCRC #8317    | Breitels  | Kent County Monument     |

P.A. 345 1990 KENT COUNTY  
PEER APPROVED 4/30/98  
CHAIRMAN *[Signature]*

The position of this corner was previously approved by the Kent County Remonumentation Peer Group, monumented by Randy J. Kolehouse on 8-31-85 and was recorded per LCRC#4308.

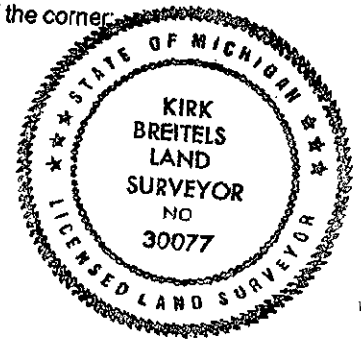
- B. Description of corner evidence found and/or method applied in restoring or reestablishing corner:
- K-6 Found Kent County Monument (Harrison) per witnesses from above LCRC as set by Randy J. Kolehouse on the North side of the RR tie fence post. This location checks Kent Co. Wits., LCRC #2318 and testimony of property owners.

LCRC #4308	Nail & Remon. tag 14" Oak	N10°E	18.93'	LCRC #8317	Nail & Remon. tag 14" Oak stump	N10°E	18.95'
	Nail & Remon. tag 8" Ash	N45°E	18.35'		Nail & Remon. tag 10" Ash	N45°E	18.31'
	Nail & Remon. tag 8" Oak	S75°E	33.21'		Nail & Remon. tag 12" Oak	S75°E	33.18'
	Nail & Remon. tag 12" Maple	S10°W	23.65'		Nail & Remon. tag 16" Maple	S10°W	23.63'
	Nail & Remon. tag 16" Oak	S80°W	9.90'		Nail & Remon. tag 20" Oak	S80°W	9.90'
	At corner fence N-S & E-W				At corner fences S & W and remains of fence N & E		

The selected location is accepted by me and is generally accepted by professional surveyors as the best available evidence of the position of the original corner.

- C. Description of monument for corner and accessories established to perpetuate locating the position of the corner:

- K-6 Standard Kent County Monument
- |  |       |        |
|--|-------|--------|
| Nail & KC Remon. tag SE side 10" Ash   | N45°E | 18.31' |
| Nail & KC Remon. tag S. side 12" Oak   | S75°E | 33.18' |
| Nail & KC Remon. tag W. side 16" Maple | S10°W | 23.63' |
| Nail & KC Remon. tag N. side 20" Oak   | S80°W | 9.90'  |
| Nail & KC Remon. tag E. side 10" Elm   | N00°E | 20.27' |
- At fence corner to South & East and remains of fence to North & West



Signed by *[Signature]*  
Surveyor's Michigan License No. 30077

Date 4/30/98