

MAR 08 1999

KENT COUNTY REMONUMENTATION

SECTION

LAND CORNER RECORDATION CERTIFICATE
Filing Requirement of Act 74, Mich. P.A. 1970

\$7.00
\$2.00

For corners in
KENT COUNTY
(County)

Located In:	Corner Code #
T 9N R 12W	K-12
T R	
T R	
T R	
T R	
S T R	
S T R	
S T R	
S T R	

- 1. Public Land Survey
- 2. Property Controlling in Section
- 3. Miscellaneous Property in Sec.

- 4. Lot No. _____, Recorded Plat _____
- 5. Private Claims _____

I, Kirk Breitels, in a field survey on Jan. 6, 1998 do hereby state that under requirements of P.A. 74, Michigan P.A. of 1970, the corner points mentioned in lines 1 and 2 above were in conformance with regulations and rules therefore as required in the current manual of survey instructions of the United States Department of the Interior, Bureau of Land Management or by a decree of a Court of Law and/or that the corner points mentioned in lines 3, 4 and 5 above were in conformance with the rules of the Michigan Board of Land Surveyors or by a Decree of a Court of Law; established, re-established, monumented, recovered, found as expressed below:

NOTE: Not more than 2 corners, all in the same town and range, may be recorded on this certificate.

A. Description of original monument and accessories and/or subsequent restoration:

K-12 1837 GLO	Whitcomb	Set Post
1966 MSHD		3/8" Spike
1972 Kent Co. Wits		Mon. Box
1972 LCRC #119	Chambers	Iron
1982 LCRC #2896	Jonker	Set Kent County Monument in Mon. Box
1995 LCRC #8323	Breitels	Kent County Monument

The position of this corner was previously approved by the Kent County Remonumentation Peer Group, monumented by Robert J. Jonker on 6-3-82 and was recorded per LCRC#2896.

B. Description of corner evidence found and/or method applied in restoring or reestablishing corner:

K-12 Found Kent County Monument (Harrison) per witnesses from above LCRC as set by Robert J. Jonker in place of the 3/4" Iron over a 3/8" Spike he found inside a Mon. Box. All checks with MSHD, Kent Co. Wits. and LCRC #119, LCRC #2896, LCRC #8323

Nail & Remon. tag 10" Ch. Elm	N35°E	88.8'	Nail & Remon. tag P. Pole	N90°E	48.84'
Nail & Remon. tag P. Pole	N90°E	48.8'	Nail & Remon. tag P. Pole	N90°W	69.64'
Nail & Remon. tag P. Pole	N90°W	69.3'	Chiseled "X" on S. end culv.	S35°W	61.78'
Chiseled "X" on S. end culv.	S35°W	61.8'	Chiseled "X" on S. end culv.	S35°E	50.83'
Chiseled "X" on S. end culv.	S35°E	50.8'	Most E'ly cor. house fnd.	N40°W	144.68'
Most E'ly cor. house fnd.	N40°W	144.68'	On C/L N-S pavement		

The selected location is accepted by me and is generally accepted by professional surveyors as the best available evidence of the position of the original corner.

C. Description of monument for corner and accessories established to perpetuate locating the position of the corner:

K-12 Standard Kent County Monument in Mon. Box					
Nail & KC Remon. tag N. side P. Pole	N90°E	48.84'			
Nail & KC Remon. tag S. side P. Pole	N90°W	69.64'			
Chiseled "X" on S. end culvert	S35°W	61.78'			
Chiseled "X" on S. end culvert	S35°E	50.83'			
Most Easterly corner house foundation	N40°W	144.68'			
On C/L N-S pavement					

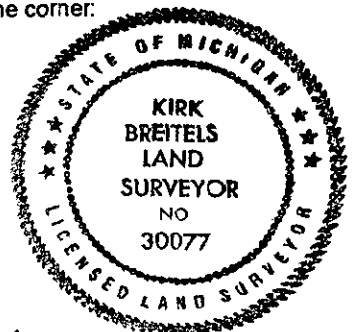
STATE OF MICHIGAN
COUNTY OF KENT
RECEIVED FOR RECORD
98 MAR -5 AM 8:30
REG. OF DEEDS
David J. Bond

10492

Register of Deeds Stamp & File Number

	A	B	C	D	E	F	G	H	I	J	K	L	M
1													
2	6		5		4		3		2		1		
3													
4	7		8		9		10		11		12		
5													
6	18		17		16		15		14		13		
7													
8	19		20		21		22		23		24		
9													
10	30		29		28		27		26		25		
11													
12	31		32		33		34		35		36		
13													

P.A. 345 1990 KENT COUNTY
PEER APPROVED 2/19/98
CHAIRMAN Harry Hubel



Signed by *Kirk Breitels*
Surveyor's Michigan License No. 30077

Date 2/19/98