

KENT COUNTY REMONUMENTATION

LAND CORNER RECORDATION CERTIFICATE
Filing Requirement of Act 74, Mich. P.A. 1970

\$7.00
\$2.00 SEP 18 1995

COMMISSION

STATE OF MICHIGAN
COUNTY OF KENT
RECEIVED FOR RECORD
95 JUN 29 AM 11:59

REG. OF DEEDS

8526

Register of Deeds Stamp & File Number

For corners in KENT COUNTY (County)	Located In:	Corner Code #
1. Public Land Survey	T 9N R 12W	L-13
	T R	
	T R	
	T R	
	T R	
2. Property Controlling in Section	S T R	
	S T R	
3. Miscellaneous Property in Section	S T R	
	S T R	

4. Lot No. _____, Recorded Plat _____
5. Private Claims _____

	A	B	C	D	E	F	G	H	I	J	K	L	M
2	6		5		4		3		2		1		
3													
4	7		8		9		10		11		12		
5													
6	18		17		16		15		14		13		
7													
8	19		20		21		22		23		24		
9													
10	30		29		28		27		26		25		
11													
12	31		32		33		34		35		36		
13													

I, Kirk Breitels, in a field survey on Jan. 23, 1995, do hereby certify that under requirements of P.A. 74, Michigan P.A. of 1970, the corner points mentioned in lines 1 and 2 above were in conformance with regulations and rules therefore as required in the current manual of survey instructions of the United States Department of the Interior, Bureau of Land Management or by a decree of a Court of Law and/or that the corner points mentioned in lines 3, 4 and 5 above were in conformance with the rules of the Michigan Board of Professional Surveyors or by a Decree of a Court of Law; established, re-established, monumented, re-monumented, recovered, found as expressed below:

NOTE: Not more than 4 corners, all in the same town and range, may be recorded on this certificate.

A. Description of original monument and accessories and/or subsequent restoration:

L-13	1837	GLO	Brookfield	Set Post
	1954	Kent Co. Wit.		Mon. Box
	1972	LCRC #124	Chambers	Iron in mon. box
	1981	LCRC #1753	Merdzinski	Set Kent County Monument in mon. box

The position of this corner was previously approved by the Kent County Remonumentation Peer Group, monumented by John A. Merdzinski on 1/5/81 and was recorded per LCRC #1753

B. Description of corner evidence found and/or method applied in restoring or reestablishing corner:

L-13 Found standard Kent Co. Mon. (Harrison) per witnesses from above LCRC as set by John A. Merdzinski in place of the 3/4" Iron Pipe he found inside a mon. box. Said Iron Pipe checks with Kent Co. Wit. and LCRC #124.

LCRC #1753

KC Remon. tag & Nail NW side P. Pole	S30°W	30.82'
KC Remon. tag & Nail NW side P. Pole	N50°E	58.28'
KC Remon. tag & Nail N. side 12" Ailanthus	N55°E	88.61'
NE cor. porch fnd.	S40°W	89.65'
SE cor. church fnd.	N25°W	64.54'
NW cor. hse. fnd.	S60°E	135.62'
Iron in mon. box	East	16.21'

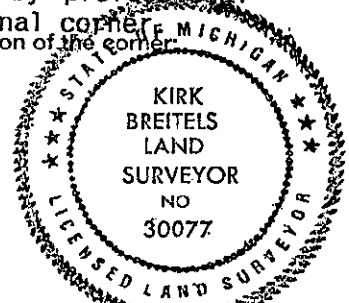
P.A. 345 1990 KENT COUNTY
PEER APPROVED 6/22/95
CHAIRMAN [Signature]

5' m/l W of C/L Bit. Rd. N; 16' m/l W of C/L Bit. Rd. S; 1' m/l S. Bit. Rd. E-W
The selected location is accepted by me and is generally accepted by professional surveyors as the best available evidence of the position of the original corner.

C. Description of monument for corner and accessories established to perpetuate locating the position of the corner:

L-13 Standard Kent County Monument

KC Remon. tag & Nail NW side P. Pole	S30°W	30.82'
KC Remon. tag & Nail NW side P. Pole	N50°E	58.28'
KC Remon. tag & Nail NE side Guy Pole	S70°E	50.90'
NE cor. porch fnd.	S40°W	89.65'
SE cor. church fnd.	N25°W	64.54'
NW cor. hse. fnd.	S60°E	135.62'
Kent Co. Mon. (L-1, T8N, R12W)	S90°E	16.20'



Signed by [Signature] Date 3/20/95

Surveyor's Michigan License No. 30077