

SURVEY & REMONUMENTATION

\$7.00  
\$2.00

MAR 08 1999

KENT COUNTY REMONUMENTATION

LAND CORNER RECORDATION CERTIFICATE  
Filing Requirement of Act 74, Mich. P.A. 1970

For corners in

KENT COUNTY

(County)

Located In:

Corner Code #

1. Public Land Survey

T 9N R 12W M-12  
T R Common  
~~T 9N R 11W A-12~~

2. Property Controlling in Section

S T R  
S T R

3. Miscellaneous Property in Sec.

S T R  
S T R

4. Lot No. \_\_\_\_\_, Recorded Plat \_\_\_\_\_  
5. Private Claims \_\_\_\_\_

I, Kirk Breitels, in a field survey on April 7, 1998 do hereby state that under requirements of P.A. 74, Michigan P.A. of 1970, the corner points mentioned in lines 1 and 2 above were in conformance with regulations and rules therefore as required in the current manual of survey instructions of the United States Department of the Interior, Bureau of Land Management or by a decree of a Court of Law and/or that the corner points mentioned in lines 3, 4 and 5 above were in conformance with the rules of the Michigan Board of Land Surveyors or by a Decree of a Court of Law; established, re-established, monumented, recovered, found as expressed below:

NOTE: Not more than 2 corners, all in the same town and range, may be recorded on this certificate.

A. Description of original monument and accessories and/or subsequent restoration:

M-12 1837 GLO Brookfield Set Post  
1965 Kent Co. Wits 1" Iron next to Stone  
1973 LCRC #478 Spicer 1" Iron  
1983 LCRC #3384 Stadt Set Kent County Monument  
1995 LCRC #8339 Breitels Kent County Monument

P.A. 345 1990 KENT COUNTY

PEER APPROVED 4/30/98

CHAIRMAN Harry Huber

The position of this corner was previously approved by the Kent County Remonumentation Peer Group, monumented by Russell E. Stadt on 5-5-83 and was recorded per LCRC #3384.

B. Description of corner evidence found and/or method applied in restoring or reestablishing corner:

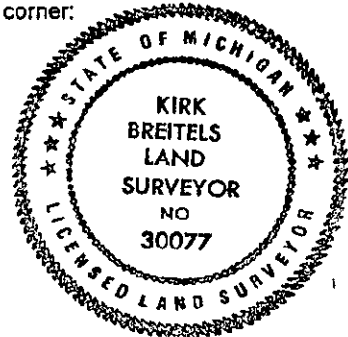
M-12 Found Kent County Monument (Harrison) per witnesses from above LCRC as set by Russell E. Stadt in place of the 1" Iron he found. Said Iron checks with Kent Co. Wit. and LCRC #478.

LCRC #3384 LCRC #8339  
Nail & Remon. tag 14" Ash N85°W 59.00' Nail & Remon. tag 20" Ash N85°W 59.08'  
Nail & Remon. tag Tri. 28" Oak East 90.45' Nail & Remon. tag Tri. 32" Oak S90°E 90.48'  
NW corner conc. blk. hse. fnd. S65°E 115.15' Nail & Remon. tag P. Pole S45°W 48.20'  
SW corner conc. blk. hse. fnd. S40°E 142.23' NW corner conc. blk. hse. fnd. S65°E 115.15'  
C/L of road N-S is 4' East SW corner conc. blk. hse. fnd. S40°E 142.23'  
On tree row E-W C/L road N-S is 4' East and on tree row E-W

The selected location is accepted by me and is generally accepted by professional surveyors as the best available evidence of the position of the original corner.

C. Description of monument for corner and accessories established to perpetuate locating the position of the corner:

M-12 Standard Kent County Monument  
Nail & KC Remon. tag N. side 20" Ash N85°W 59.00'  
Nail & KC Remon. tag S. side Tri. 32" Oak S90°E 90.48'  
Nail & KC Remon. tag SE side P. Pole S45°W 48.20'  
NW corner concrete block house foundation S65°E 115.15'  
SW corner concrete block house foundation S40°E 142.23'  
C/L N-S asphalt road is 4' ± East  
On tree row E-W ±



Signed by Kirk Breitels  
Surveyor's Michigan License No. 30077

Date 4/30/98

10636

Register of Deeds Stamp & File Number

Grid with columns A-L and rows 1-13. Numbers 6-36 are placed in the grid cells.

STATE OF MICHIGAN  
COUNTY OF KENT  
RECEIVED FOR RECORD  
98 MAY 21 AM 8:33  
REG. OF DEEDS  
*Luis Standa*