

**SURVEY & REMONUMENTATION**  
 \$7.00  
 \$2.00  
 MAR 08 1999

**KENT COUNTY REMONUMENTATION**

**LAND CORNER RECORDATION CERTIFICATE**  
 Filing Requirement of Act 74, Mich. P.A. 1970

For corners in **SECTION**

<u>KENT COUNTY</u> (County)	Located In:	Corner Code #
1. Public Land Survey	T ___ R ___	_____
	T ___ R ___	_____
	T ___ R ___	_____
	T ___ R ___	_____
2. Property Controlling in Section	S <u>24</u> T <u>9N</u> R <u>12W</u>	<u>Wit Mon on</u>
	S ___ T ___ R ___	<u>N-S 1/4 line</u>
3. Miscellaneous Property in Sec.	S ___ T ___ R ___	_____
	S ___ T ___ R ___	_____

STATE OF MICHIGAN  
 COUNTY OF KENT  
 RECEIVED FOR RECORD  
 98 DEC 23 AM 8:54  
 REG. OF DEEDS  
*Lucy Bond*  
 other code # 3  
**11079**  
 Register of Deeds Stamp & File Number

4. Lot No. \_\_\_\_\_, Recorded Plat \_\_\_\_\_  
 5. Private Claims \_\_\_\_\_

I, Kirk Breitels, in a field survey on Oct. 13, 1998 do hereby state that under requirements of P.A. 74, Michigan P.A. of 1970, the corner points mentioned in lines 1 and 2 above were in conformance with regulations and rules therefore as required in the current manual of survey instructions of the United States Department of the Interior, Bureau of Land Management or by a decree of a Court of Law and/or that the corner points mentioned in lines 3, 4 and 5 above were in conformance with the rules of the Michigan Board of Land Surveyors or by a Decree of a Court of Law; established, re-established, monumented, recovered, found as expressed below:

NOTE: Not more than 2 corners, all in the same town and range, may be recorded on this certificate.

A	B	C	D	E	F	G	H	I	J	K	L	M
1												
2	6		5		4		3		2		1	
3												
4	7		8		9		10		11		12	
5												
6	18		17		16		15		14		13	
7												
8	19		20		21		22		23		24	
9												
10	30		29		28		27		26		25	
11												
12	31		32		33		34		35		36	
13												

A. Description of original monument and accessories and/or subsequent restoration:

1837                      GLO                      Whitcomb                      Not Set

P.A. 345 1990 KENT COUNTY  
 PEER APPROVED 10/22/98  
 CHAIRMAN *Harry Kubers*

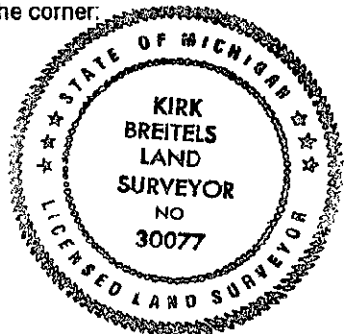
B. Description of corner evidence found and/or method applied in restoring or reestablishing corner:

Established 1/8 corner on N-S 1/4 line between the N 1/4 corner and the computed C 1/4 corner.

The above location is accepted by me and is generally accepted by professional surveyors as the best available evidence of the position of the Witness Corner.

C. Description of monument for corner and accessories established to perpetuate locating the position of the corner:

Set Kent County Witness Monument at the 1/8 corner described above  
 SW face of fence post                      N50°E                      4.02'  
 Nail & KC Remon. tag N. side 10" & 14" Cherry                      S80°W                      53.69'  
 Nail & KC Remon. tag NW side 6" Choke Cherry                      S30°W                      8.32'  
 N 1/4 corner Sec. 24 (Kent Co. Mon.)                      North                      1331.09



Signed by *Kirk Breitels*  
 Surveyor's Michigan License No. 30077

Date 12/15/98