

**SURVEY & REMONUMENTATION**

**KENT COUNTY REMONUMENTATION**

**LAND CORNER RECORDATION CERTIFICATE**  
Filing Requirement of Act 74, Mich. P.A. 1970

MAR 08 1999

SECTION \_\_\_\_\_

For corners in

KENT COUNTY

(County)

Located In:

Corner Code #

- 1. Public Land Survey
  - T \_\_\_ R \_\_\_
  - T \_\_\_ R \_\_\_
  - T \_\_\_ R \_\_\_
  - T \_\_\_ R \_\_\_
- 2. Property Controlling in Section
  - S 24 T 9N R 12W Wit. Mon. on
  - S \_\_\_ T \_\_\_ R \_\_\_ E-W 1/4 line
- 3. Miscellaneous Property in Sec.
  - S \_\_\_ T \_\_\_ R \_\_\_
  - S \_\_\_ T \_\_\_ R \_\_\_

- 4. Lot No. \_\_\_\_\_, Recorded Plat \_\_\_\_\_
- 5. Private Claims \_\_\_\_\_

I, Kirk Breitels, in a field survey on Oct. 13, 1998 do hereby state that under requirements of P.A. 74, Michigan P.A. of 1970, the corner points mentioned in lines 1 and 2 above were in conformance with regulations and rules therefore as required in the current manual of survey instructions of the United States Department of the Interior, Bureau of Land Management or by a decree of a Court of Law and /or that the corner points mentioned in lines 3, 4 and 5 above were in conformance with the rules of the Michigan Board of Land Surveyors or by a Decree of a Court of Law; established, re-established, monumented, recovered, found as expressed below:

NOTE: Not more than 2 corners, all in the same town and range, may be recorded on this certificate.

A. Description of original monument and accessories and/or subsequent restoration:

1837                      GLO                      Whitcomb                      Not Set

B. Description of corner evidence found and/or method applied in restoring or reestablishing corner:

Established a point on the East & West 1/4 line - as computed.

W 1/4 corner is West 1351.93'                      Comp. C 1/4 corner is East 1296.61'

The above location is accepted by me and is generally accepted by professional surveyors as the best available evidence of the position of the Witness Corner.

C. Description of monument for corner and accessories established to perpetuate locating the position of the corner:

- Set Kent County Witness Monument at location described above
- NW corner house foundation (#10400)                      N55°E 127.30'
- NW corner house foundation (#10380)                      S45°E 121.80'
- Nail & KC Remon. tag W. side 40" Maple                      S10°E 71.69'
- Nail & KC Remon. tag N. side Tw. 18" Cherry                      N75°W 48.82'
- Nail & KC Remon. tag in W. root 40" Maple                      East 3.43'
- C/L Alpine Ave. N-S is West 13' ±

STATE OF MICHIGAN  
 COUNTY OF KENT  
 RECEIVED FOR RECORD  
 98 DEC 23 AM 8:59  
 REG. OF DEEDS  
*Luis J. Pineda*

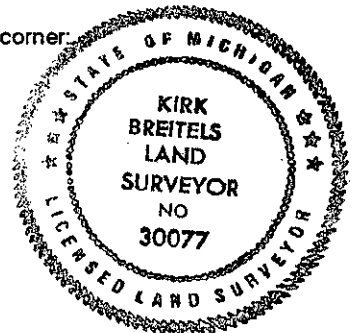
other code # 4

11080

Register of Deeds Stamp & File Number

	A	B	C	D	E	F	G	H	I	J	K	L	M
1													
2	6		5		4		3		2		1		
3													
4	7		8		9		10		11		12		
5													
6	18		17		16		15		14		13		
7													
8	19		20		21		22		23		24		
9													
10	30		29		28		27		26		25		
11													
12	31		32		33		34		35		36		
13													

P.A. 345 1990 KENT COUNTY  
 PEER APPROVED 10/22/98  
 CHAIRMAN *[Signature]*



Signed by *[Signature]*  
 Surveyor's Michigan License No. 30077

Date 12/15/98