

SURVEY & REMONUMENTATION

274

\$7.00
\$2.00

MAY 22 2000

LAND CORNER RECORDATION CERTIFICATE
Filing Requirement of Act 74, Mich. P.A. 1970
KENT COUNTY REMONUMENTATION

STATE OF MICHIGAN
COUNTY OF KENT
RECEIVED FOR RECORD
1999 DEC - 8 AM 10:02

REG. OF DEEDS
W. J. Colehouse

SECTION

For corners in

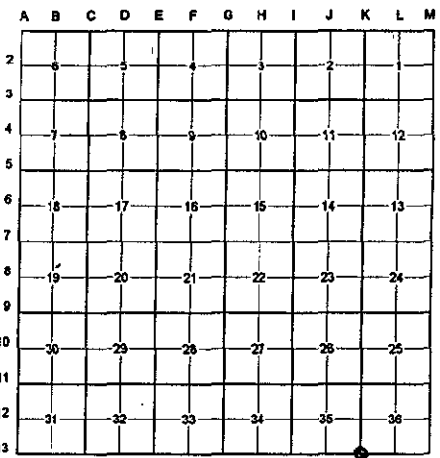
Kent (County)	Located in:	Spencer Township	Corner Code #
1. Public Land Survey	T <u>10N</u>	R <u>9W</u>	<u>K-13</u>
	T _____	R _____	_____
	T _____	R _____	_____
	T _____	R _____	_____
2. Property Controlling in Section	S _____	T _____	R _____
	S _____	T _____	R _____
3. Miscellaneous Property in Sec.	S _____	T _____	R _____
	S _____	T _____	R _____

11537

Register of Deeds Stamp & File Number

4. Lot No. _____, Recorded Plat _____
5. Private Claims _____

I, Randy Kolehouse, in a field survey on September 29 19 99, do hereby certify that under requirements of P.A. 74 Michigan P.A. of 1970, the corner points mentioned in lines 1 and 2 above were in conformance with regulations and rules therefore as required in the current manual of survey instructions of the United States Department of the interior, Bureau of Land Management or by a decree of a Court of Law and/or that the corner points mentioned in lines 3, 4 and 5 above were in conformance with the rules of the Michigan Board of Land Surveyors or by a Decree of a Court of Law; established, re-established, monumented, re-monumented, recovered, found as expressed below:



NOTE: Not more than 4 corners, all in the same town and range, may be recorded on this certificate.

A. Description of original monument and accessories and/or subsequent restoration:

K-13	1837	G.L.O. Notes	Cathcart	Set Post
	N/A	Witness Map	K.C. Surveyor	3/4" Iron
	1984	L.C.R.C. #4010	John Bueche	Fnd. "T" Iron / Set K.C. Monument
	1989	L.C.R.C. #5085	John Bueche	K.C. Monument
	1997	L.C.R.C. #9958	Kirk Breitels	K.C. Monument

P.A. 345 1990 KENT COUNTY
PEER APPROVED 10/28/99
CHAIRMAN John Bueche

Note: This corner is not common with K-1, T9N, R9W.

This corner was originally approved by the Kent County Remonumentation Peer Group and monumented by John Bueche on 10/11/84 and was recorded per L.C.R.C. #4010.

B. Description of corner evidence found and/or method applied in restoring or reestablishing corner:

K-13 Found a Standard Kent County Monument on the C/L of 16 Mile Road (bit.) running East and West per L.C.R.C.'s #4010, #5085, and #9958 as set by John Bueche in place of a "T" iron he found which checked the K.C. Surveyor's records.

L.C.R.C. #4010

L.C.R.C. #9958

- K.C. Remon. tag & nail in E. side 12" Pine S 40° E 40.81'
- K.C. Remon. tag & nail in E. side 14" Pine S 30° W 43.05'
- K.C. Remon. tag & nail in E. side 14" Poplar S 65° W 69.48'
- K.C. Remon. tag & nail in W. side 24" Oak N 40° W 61.05'
- K.C. Remon. tag & nail in W. side 10" Oak N 0° E 39.97'
- K.C. Remon. tag & nail in W. side 12" Oak N 40° E 56.69'
- 1.3' South of C/L blacktop

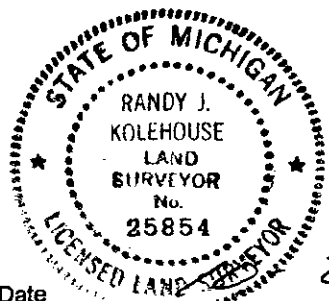
- Nail & KC Remon. tag E. side 20" Pine S40°E 40.81' (m. 40.79')
- Nail & KC Remon. tag E. side 20" Pine S30°W 43.05' (m. 43.03')
- Nail & KC Remon. tag E. side 20" Poplar S65°W 69.41' (m. 69.40')
- Nail & KC Remon. tag E. side 30" Oak N40°W 60.28' (m. 60.52')
- Nail & KC Remon. tag W. side 14" Oak N00°E 40.08' (m. 40.09')
- Nail & KC Remon. tag W. side 18" Oak N40°E 56.74' (m. 56.71')
- 1.3' South of C/L blacktop
- K.C. Mon. (K-1, T9N, R9W) - West 40.98' (m. 40.99')

The selected location is accepted by me and is generally accepted by professional surveyors as the best available evidence of the position of the original corner.

C. Description of monument for corner and accessories established to perpetuate locating the position of the corner:

K-13 Standard Kent County Monument

- Nail & K.C. remon. tag on E side 20" Pine S 40° E 40.79'
- Nail & K.C. remon. tag on E side 20" Pine S 30° W 43.03'
- Nail & K.C. remon. tag on E side 20" Poplar S 65° W 69.40'
- Nail & K.C. remon. tag on W side 14" Oak N 00° E 40.09'
- Nail & K.C. remon. tag on S side 18" Oak N 40° E 56.71'
- On C/L of bit. road running E-W
- K.C. Mon. (K-1, T9N, R9W, West 40.99')



Signed by Randy J. Kolehouse Date 29-99
WILLIAMS & WORKS

Surveyor's Michigan License No. 25854